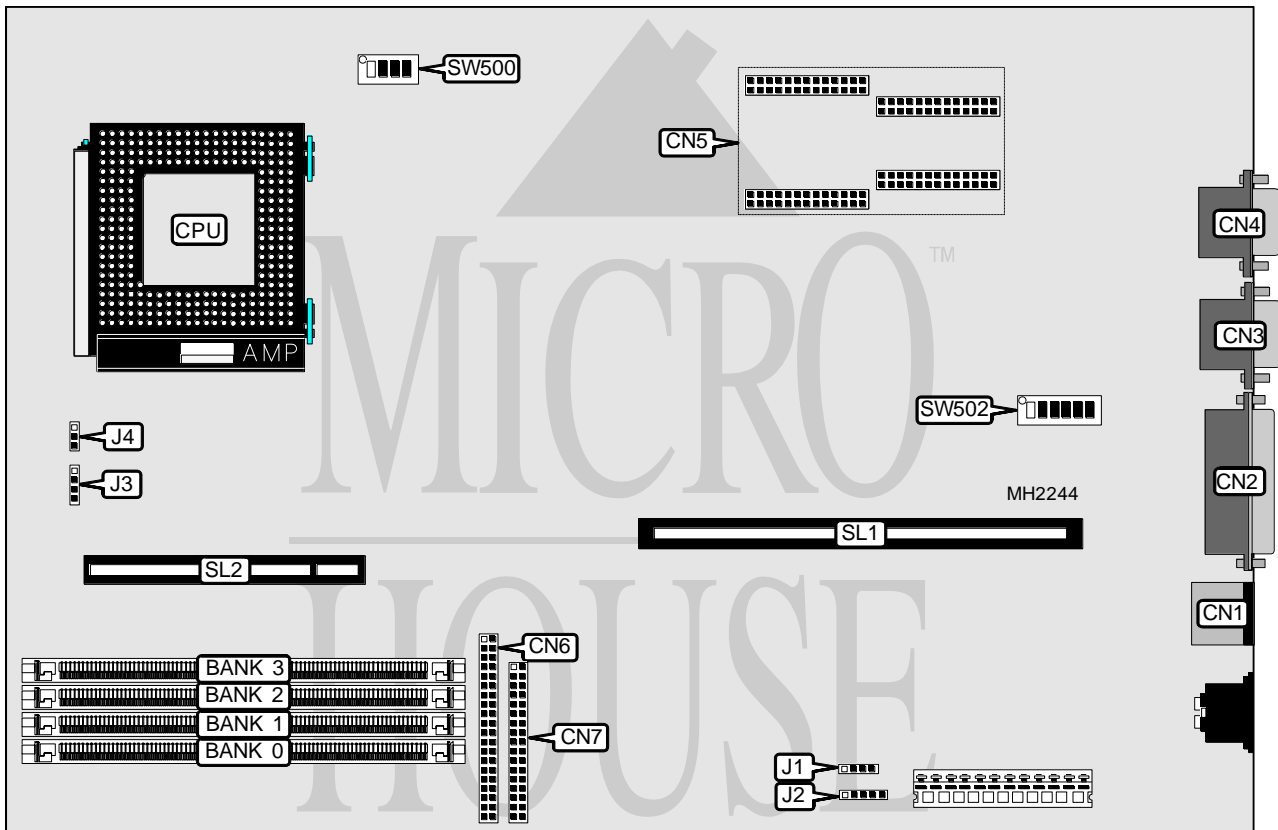


COMPAQ COMPUTER CORPORATION DESKPRO XE 486

Processor	80486SX/80487SX/80486DX/ODP486SX/80486DX2
Processor Speed	25/33/50(internal)/66(internal)MHz
Chip Set	Compaq
Max. Onboard DRAM	32MB
Cache	64/256KB (on external cache card)
BIOS	AMI
Dimensions	330mm x 218mm
I/O Options	External cache card, floppy drive interface, IDE interface, parallel port, PS/2 mouse port, serial port, VGA port
NPU Options	None



CONNECTIONS			
Purpose	Location	Purpose	Location
PS/2 mouse port	CN1	Floppy drive interface	CN7
Parallel port	CN2	Speaker	J1
Serial port	CN3	Power LED & keylock	J2
VGA port	CN4	External battery	J3
Video memory upgrade	CN5	Riser card	SL1
IDE interface	CN6	External cache card	SL2

Continued next page. . .

COMPAQ COMPUTER CORPORATION

DESKPRO XE 486

... continued from previous page

USER CONFIGURABLE SETTINGS		
Function	Jumper/Switch	Position
í Battery type select internal	J4	pins 1 & 2 closed
Battery type select external	J4	pins 2 & 3 closed
í On board video enabled	SW502/1	Off
On board video disabled	SW502/1	On
í Setup write protect disabled	SW502/2	Off
Setup write protect enabled	SW502/2	On
í Floppy drive select read/write	SW502/3	Off
í Floppy drive select read only	SW502/3	On
í Factory configured - do not alter	SW502/4	Off
í CMOS memory normal operation	SW502/5	Off
CMOS memory clear	SW502/5	On
í Flash BIOS write protect enabled	SW502/6	Off
Flash BIOS write protect disabled	SW502/6	On

DRAM CONFIGURATION				
Size	Bank 0	Bank 1	Bank 2	Bank 3
1MB	(1) 256K x 36	NONE	NONE	NONE
2MB	(1) 256K x 36	(1) 256K x 36	NONE	NONE
2MB	(1) 512K x 36	NONE	NONE	NONE
3MB	(1) 256K x 36	(1) 256K x 36	(1) 256K x 36	NONE
3MB	(1) 256K x 36	(1) 512K x 36	NONE	NONE
4MB	(1) 256K x 36	(1) 256K x 36	(1) 256K x 36	(1) 256K x 36
4MB	(1) 512K x 36	(1) 512K x 36	NONE	NONE
4MB	(1) 1M x 36	NONE	NONE	NONE
5MB	(1) 256K x 36	(1) 512K x 36	(1) 512K x 36	NONE
5MB	(1) 256K x 36	(1) 1M x 36	NONE	NONE
6MB	(1) 512K x 36	(1) 512K x 36	(1) 512K x 36	NONE
6MB	(1) 512K x 36	(1) 1M x 36	NONE	NONE
7MB	(1) 256K x 36	(1) 512K x 36	(1) 512K x 36	(1) 512K x 36
8MB	(1) 512K x 36	(1) 512K x 36	(1) 512K x 36	(1) 512K x 36
8MB	(1) 1M x 36	(1) 1M x 36	NONE	NONE
8MB	(1) 2M x 36	NONE	NONE	NONE
9MB	(1) 256K x 36	(1) 1M x 36	(1) 1M x 36	NONE
9MB	(1) 256K x 36	(1) 2M x 36	NONE	NONE
10MB	(1) 512K x 36	(1) 1M x 36	(1) 1M x 36	NONE
10MB	(1) 512K x 36	(1) 2M x 36	NONE	NONE
12MB	(1) 1M x 36	(1) 1M x 36	(1) 1M x 36	NONE
12MB	(1) 1M x 36	(1) 2M x 36	NONE	NONE
13MB	(1) 256K x 36	(1) 1M x 36	(1) 1M x 36	(1) 1M x 36
14MB	(1) 512K x 36	(1) 1M x 36	(1) 1M x 36	(1) 1M x 36
16MB	(1) 1M x 36	(1) 1M x 36	(1) 1M x 36	(1) 1M x 36
16MB	(1) 2M x 36	(1) 2M x 36	NONE	NONE
17MB	(1) 256K x 36	(1) 2M x 36	(1) 2M x 36	NONE
18MB	(1) 512K x 36	(1) 2M x 36	(1) 2M x 36	NONE

Continued next page...

COMPAQ COMPUTER CORPORATION

DESKPRO XE 486

... continued from previous page

DRAM CONFIGURATION (CON'T)				
Size	Bank 0	Bank 1	Bank 2	Bank 3
20MB	(1) 1M x 36	(1) 2M x 36	(1) 2M x 36	NONE
24MB	(1) 2M x 36	(1) 2M x 36	(1) 2M x 36	NONE
25MB	(1) 256K x 36	(1) 2M x 36	(1) 2M x 36	(1) 2M x 36
26MB	(1) 512K x 36	(1) 2M x 36	(1) 2M x 36	(1) 2M x 36
28MB	(1) 1M x 36	(1) 2M x 36	(1) 2M x 36	(1) 2M x 36
32MB	(1) 2M x 36	(1) 2M x 36	(1) 2M x 36	(1) 2M x 36

CPU TYPE CONFIGURATION				
Type	SW500/1	SW500/2	SW500/3	SW500/4
80486SX-33	Off	Off	Off	Off
80487SX-25	Off	On	On	On
ODP486SX-25/50	Off	On	On	On
ODP486SX-33/66	Off	On	On	Off
80486DX-33	On	Off	On	Off
80486DX2-50	On	Off	On	On
80486DX2-66	On	Off	On	Off