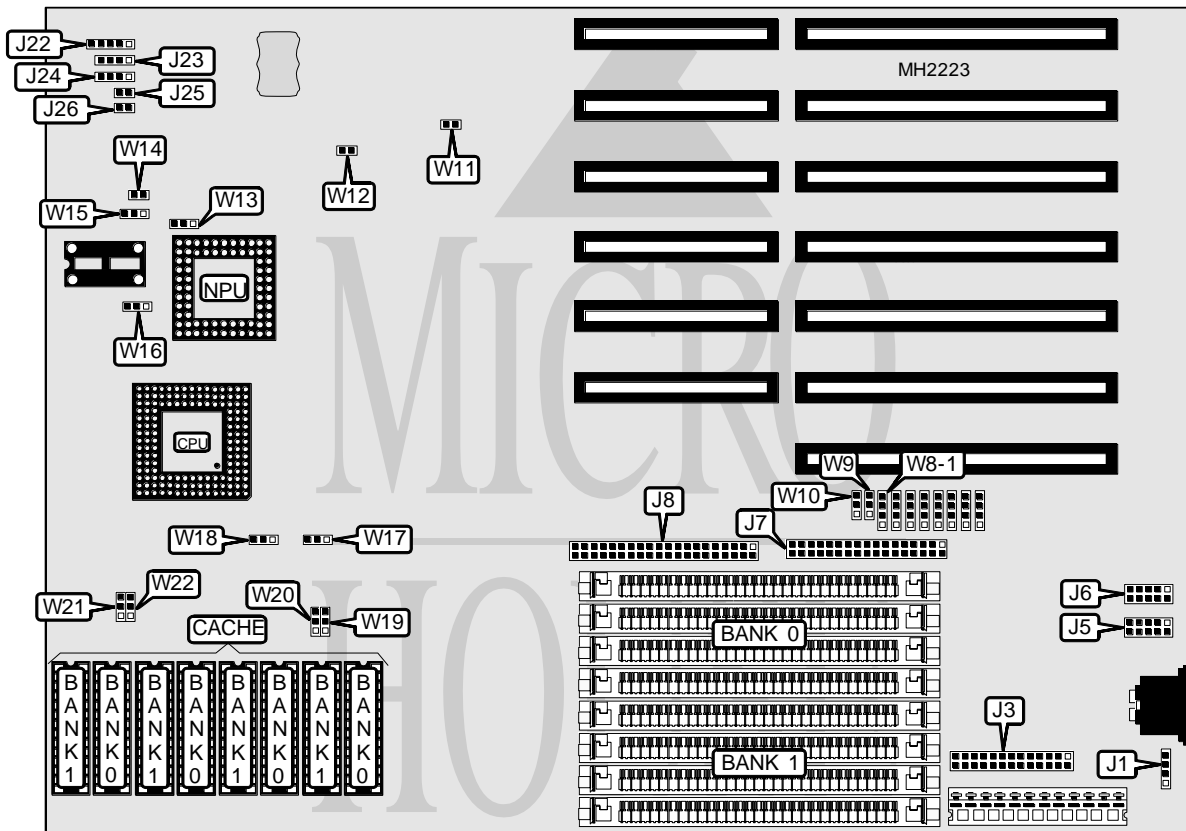


DEICO ELECTRONICS, INC. 386C

Processor	80386DX
Processor Speed	33/40MHz
Chip Set	Unidentified
Max. Onboard DRAM	32MB
Cache	32/64/128/256KB
BIOS	AMI
Dimensions	330mm x 218mm
I/O Options	Floppy drive interface, IDE interface, parallel port, serial ports (2)
NPU Options	80387DX



CONNECTIONS			
Purpose	Location	Purpose	Location
External battery	J1	Power LED & keylock	J22
Parallel port	J3	Speaker	J23
Serial port 2	J5	Turbo LED	J24 (pins 1 & 2)
Serial port 1	J6	Turbo switch	J24 (pins 3 & 4)
Floppy drive interface	J7	Reset switch	J25
IDE interface	J8	IDE interface LED	J26

Continued next page. . .

DEICO ELECTRONICS, INC.

386C

... continued from previous page

USER CONFIGURABLE SETTINGS		
Function	Jumper	Position
í Floppy drive interface enabled	W9	pins 1 & 2 closed
Floppy drive interface disabled	W9	pins 2 & 3 closed
í IDE interface enabled	W10	pins 1 & 2 closed
IDE interface disabled	W10	pins 2 & 3 closed
í Factory configured - do not alter	W11	Open
í Monitor type select color	W12	pins 1 & 2 closed
Monitor type select monochrome	W12	pins 2 & 3 closed
í Battery type select internal	W14	pins 1 & 2 closed
Battery type select external	W14	pins 2 & 3 closed
í CMOS memory normal operation	W15	pins 1 & 2 closed
CMOS memory clear	W15	pins 2 & 3 closed
í NPU synchronous with CPU	W16	pins 2 & 3 closed
NPU asynchronous with CPU	W16	pins 1 & 2 closed

DRAM CONFIGURATION		
Size	Bank 0	Bank 1
1MB	(4) 256K x 9	NONE
2MB	(4) 256K x 9	(4) 256K x 9
4MB	(4) 1M x 9	NONE
5MB	(4) 256K x 9	(4) 1M x 9
8MB	(4) 1M x 9	(4) 1M x 9
16MB	(4) 4M x 9	NONE
20MB	(4) 1M x 9	(4) 4M x 9
20MB	(4) 4M x 9	(4) 1M x 9
32MB	(4) 4M x 9	(4) 4M x 9

CACHE CONFIGURATION		
Size	Bank 0	Bank 1
32KB	(4) 8K x 8	NONE
64KB	(4) 8K x 8	(4) 8K x 8
128KB	(4) 32K x 8	NONE
256KB	(4) 32K x 8	(4) 32K x 8

CACHE JUMPER CONFIGURATION						
Size	W17	W18	W19	W20	W21	W22
32KB	1 & 2	1 & 2	1 & 2	1 & 2	1 & 2	1 & 2
64KB	1 & 2	1 & 2	1 & 2	1 & 2	2 & 3	2 & 3
128KB	2 & 3	2 & 3	1 & 2	1 & 2	2 & 3	2 & 3
256KB	2 & 3	2 & 3	2 & 3	2 & 3	2 & 3	2 & 3

Note: Pins designated should be in the closed position.

Continued next page. . .

DEICO ELECTRONICS, INC.

386C

... continued from previous page

CPU SPEED CONFIGURATION		
CPU speed	Bus speed	W13
33/40MHz	8/10MHz	pins 1 & 2 closed
33/40MHz	11/13MHz	pins 2 & 3 closed

PARALLEL PORT/IRQ CONFIGURATION			
Port	IRQ	W1	W4
LPT1	IRQ7	pins 1 & 2 closed	pins 1 & 2 closed
LPT2	IRQ5	pins 2 & 3 closed	pins 2 & 3 closed
Disabled	Disabled	pins 3 & 4 closed	pins 3 & 4 closed

SERIAL PORT CONFIGURATION			
Serial port	COM port	W2	W3
Port 1	COM1	pins 1 & 2 closed	N/A
Port 1	COM3	pins 2 & 3 closed	N/A
Port 2	COM2	N/A	pins 1 & 2 closed
Port 2	COM4	N/A	pins 2 & 3 closed
Disabled	Disabled	pins 3 & 4 closed	pins 3 & 4 closed

SERIAL PORT IRQ3 CONFIGURATION		
Serial port	IRQ	W5
Port 1	IRQ3	pins 2 & 3 closed
Port 2	IRQ3	pins 1 & 2 closed
Disabled	Disabled	pins 3 & 4 closed

SERIAL PORT IRQ4 CONFIGURATION		
Serial port	IRQ	W6
Port 1	IRQ4	pins 2 & 3 closed
Port 2	IRQ4	pins 1 & 2 closed
Disabled	Disabled	pins 3 & 4 closed

SERIAL PORT IRQ5 CONFIGURATION		
Serial port	IRQ	W7
Port 1	IRQ5	pins 2 & 3 closed
Port 2	IRQ5	pins 1 & 2 closed
Disabled	Disabled	pins 3 & 4 closed

SERIAL PORT IRQ9 CONFIGURATION		
Serial port	IRQ	W8
Port 1	IRQ9	pins 2 & 3 closed
Port 2	IRQ9	pins 1 & 2 closed
Disabled	Disabled	pins 3 & 4 closed