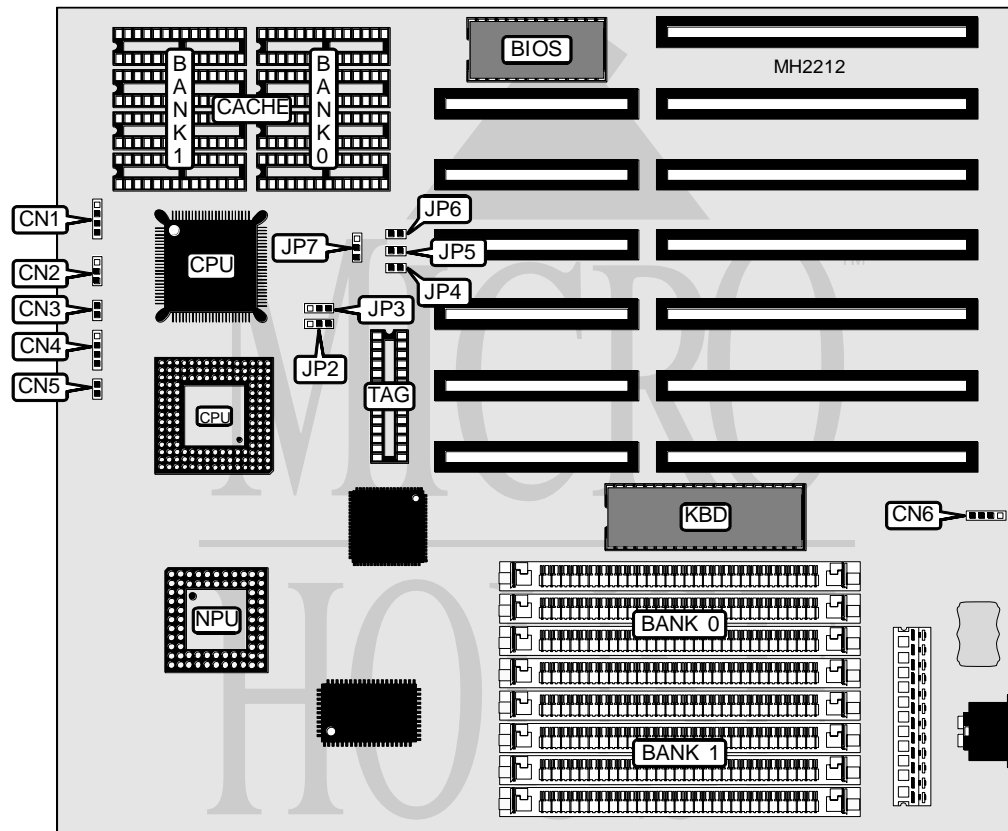


UNIDENTIFIED

386-40/33 CACHE SYSTEM BOARD

Processor	80386DX/AMD386DX/CX486DLC
Processor Speed	33/40MHz
Chip Set	ALI
Max. Onboard DRAM	32MB
Cache	64/128/256KB
BIOS	AMI
Dimensions	254mm x 218mm
I/O Options	None
NPU Options	80387SX/CX87DLC/83D87



CONNECTIONS			
Purpose	Location	Purpose	Location
Power LED & keylock	CN1	Speaker	CN4
Turbo LED	CN2	Reset switch	CN5
Turbo switch	CN3	External battery	CN6

Continued next page. . .

UNIDENTIFIED 386-40/33 CACHE SYSTEM BOARD

... continued from previous page

USER CONFIGURABLE SETTINGS		
Function	Jumper	Position
í Factory configured - do not alter	JP2	Open
í Factory configured - do not alter	JP3	Open

DRAM CONFIGURATION		
Size	Bank 0	Bank 1
1MB	(4) 256K x 9	NONE
2MB	(4) 256K x 9	(4) 256K x 9
4MB	(4) 1M x 9	NONE
5MB	(4) 1M x 9	(4) 256K x 9
8MB	(4) 1M x 9	(4) 1M x 9
16MB	(4) 4M x 9	NONE
17MB	(4) 4M x 9	(4) 256K x 9
20MB	(4) 4M x 9	(4) 1M x 9
32MB	(4) 4M x 9	(4) 4M x 9

CACHE CONFIGURATION			
Size	Bank 0	Bank 1	TAG
64KB	(4) 8K x 8	(4) 8K x 8	(1) 8K x 8
128KB	(4) 32K x 8	NONE	(1) 8K x 8
256KB	(4) 32K x 8	(4) 32K x 8	(1) 32K x 8

CACHE JUMPER CONFIGURATION				
Size	JP4	JP5	JP6	JP7
64KB	Open	Open	Open	Open
128KB	Closed	Closed	Open	pins 2 & 3 closed
256KB	Closed	Closed	Closed	pins 1 & 2 closed