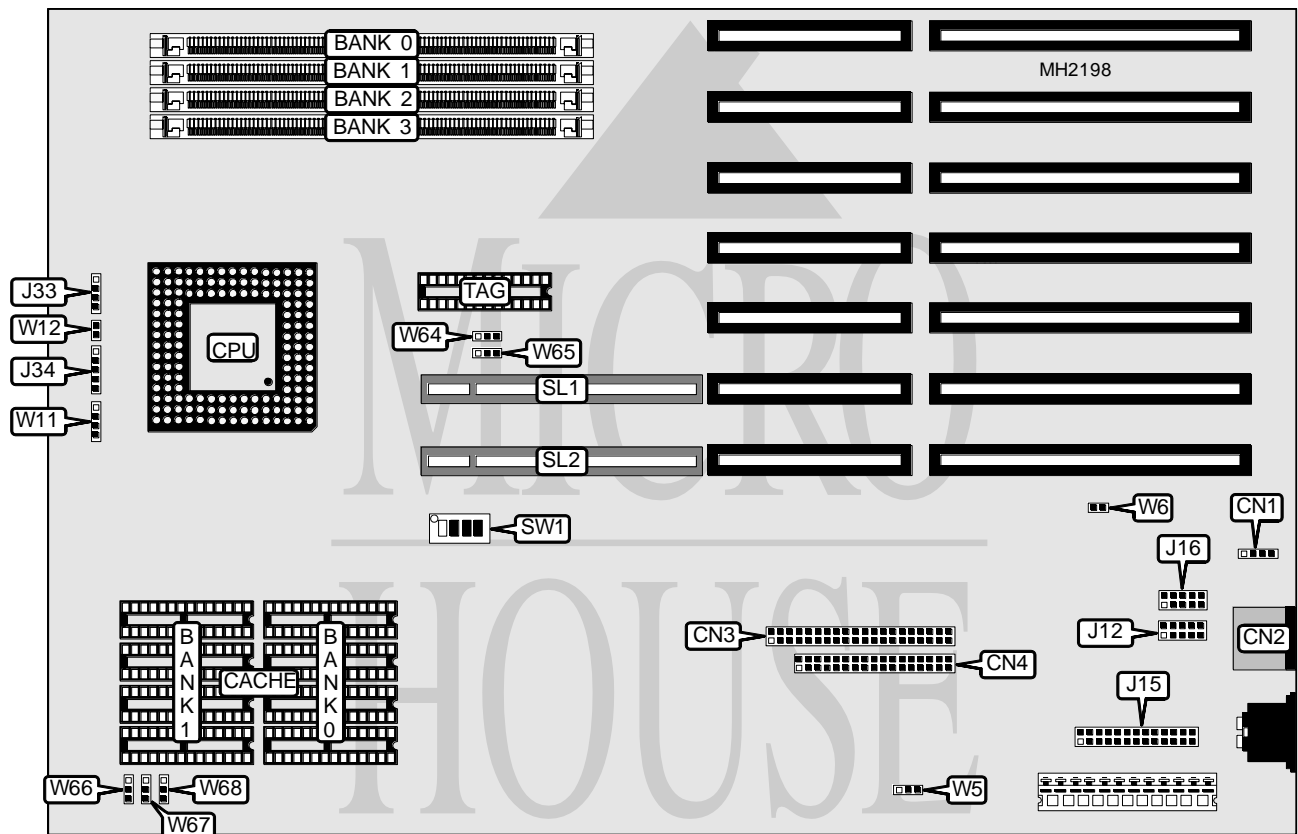


DELL COMPUTER CORPORATION XPS 486 MIDSIZE VER. 2

Processor	80486DX2
Processor Speed	50(internal)/66(internal)MHz
Chip Set	Micronics
Max. Onboard DRAM	64MB
Cache	128/256KB
BIOS	AMI
Dimensions	330mm x 218mm
I/O Options	32-bit VESA local bus slots (2), floppy drive interface, IDE interface, parallel port, PS/2 mouse port, serial ports (2)
NPU Options	None



CONNECTIONS			
Purpose	Location	Purpose	Location
External battery	CN1	Serial port 2	J16
PS/2 mouse port	CN2	Speaker	J33
IDE interface	CN3	Power LED & keylock	J34
Floppy drive interface	CN4	IDE interface LED	W11
Serial port 1	J12	Reset switch	W12
Parallel port	J15	32-bit VESA local bus slots	SL1 & SL2

Continued on next page . . .

DELL COMPUTER CORPORATION

XPS 486 MIDSIZE VER. 2

... continued from previous page

USER CONFIGURABLE SETTINGS		
Function	Jumper	Position
í Factory configured - do not alter	W1	Open
í Parallel port bidirectional	W5	pins 1 & 2 closed
Parallel port unidirectional (printer)	W5	pins 2 & 3 closed
í Monitor type select color	W6	Closed
Monitor type select monochrome	W6	Open
í Factory configured - do not alter	W7	Closed
í Factory configured - do not alter	W8	pins 1 & 2 closed
í Factory configured - do not alter	W20	pins 1 & 2 closed
í Factory configured - do not alter	W31	Open
í Factory configured - do not alter	W40	pins 1 & 2 closed
í Factory configured - do not alter	W70	pins 1 & 2 closed
í Factory configured - do not alter	W71	Open

Note: The location of the factory configured jumpers is unknown.

DRAM CONFIGURATION				
Size	Bank 0	Bank 1	Bank 2	Bank 3
4MB	(1) 1M x 36	NONE	NONE	NONE
8MB	(1) 1M x 36	(1) 1M x 36	NONE	NONE
12MB	(1) 1M x 36	(1) 1M x 36	(1) 1M x 36	NONE
16MB	(1) 1M x 36	(1) 1M x 36	(1) 1M x 36	(1) 1M x 36
16MB	(1) 4M x 36	NONE	NONE	NONE
20MB	(1) 1M x 36	(1) 4M x 36	NONE	NONE
24MB	(1) 1M x 36	(1) 1M x 36	(1) 4M x 36	NONE
32MB	(1) 4M x 36	(1) 4M x 36	NONE	NONE
36MB	(1) 1M x 36	(1) 4M x 36	(1) 4M x 36	NONE
40MB	(1) 1M x 36	(1) 1M x 36	(1) 4M x 36	(1) 4M x 36
48MB	(1) 4M x 36	(1) 4M x 36	(1) 4M x 36	NONE
64MB	(1) 4M x 36	(1) 4M x 36	(1) 4M x 36	(1) 4M x 36

CACHE CONFIGURATION			
Size	Bank 0	Bank 1	TAG
128KB	(4) 32K x 8	NONE	(1) 8K x 8
256KB	(4) 32K x 8	(4) 32K x 8	NONE

CACHE JUMPER CONFIGURATION					
Size	W64	W65	W66	W67	W68
128KB	2 & 3	1 & 2	1 & 2	1 & 2	2 & 3
256KB	2 & 3	2 & 3	2 & 3	2 & 3	2 & 3

Note: Pins designated should be in the closed position.

CPU SPEED CONFIGURATION				
Speed	SW1/1	SW1/2	SW1/3	SW1/4
50iMHz	On	On	On	On
66iMHz	Off	Off	Off	Off