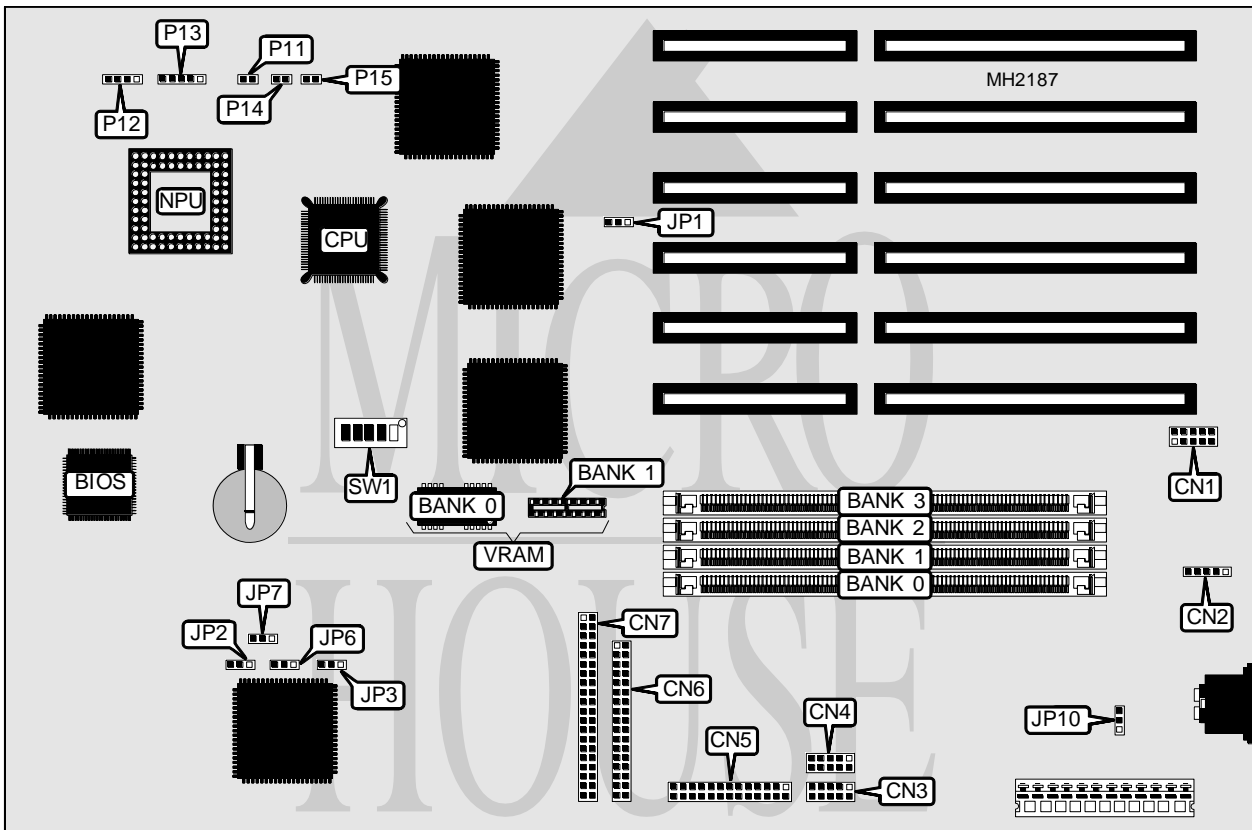


DELL COMPUTER CORPORATION SYSTEM V386DX/33

Processor	80386DX
Processor Speed	33MHz
Chip Set	VLSI
Max. Onboard DRAM	64MB
Cache	16KB
BIOS	AMI
Dimensions	330mm x 218mm
I/O Options	Floppy drive interface, IDE interface, parallel port, PS/2 mouse interface, serial ports (2), VGA connector
NPU Options	80387DX



CONNECTIONS			
Purpose	Location	Purpose	Location
VGA connector	CN1	IDE interface	CN7
PS/2 mouse connector	CN2	Reset switch	P11
Serial port 2	CN3	Speaker	P12
Serial port 1	CN4	Power LED & keylock	P13
Parallel port	CN5	Turbo LED	P14
Floppy drive interface	CN6	Turbo switch	P15

Continued on next page. . .

DELL COMPUTER CORPORATION SYSTEM V386DX-33

... continued from previous page

USER CONFIGURABLE SETTINGS		
Function	Jumper/Switch	Position
í VGA IRQ generation enabled	JP1	pins 2 & 3 closed
VGA IRQ generation disabled	JP1	pins 1 & 2 closed
í On board VGA enabled	JP2	pins 2 & 3 closed
On board VGA disabled	JP2	pins 1 & 2 closed
í Single IDE drive installed	JP3	pins 1 & 2 closed
Dual IDE drives installed	JP3	Open
í Monitor type select color	JP6	pins 1 & 2 closed
Monitor type select monochrome	JP6	pins 2 & 3 closed
í CMOS memory normal operation	JP7	pins 2 & 3 closed
CMOS memory clear	JP7	pins 1 & 2 closed
í Power good signal detect from power supply enabled	JP10	pins 1 & 2 closed
Power good signal detect from power supply disabled	JP10	pins 2 & 3 closed
í Monitor type select all others	SW1/1	Off
Monitor type select old Multisync	SW1/1	On
í VGA type select PS/2	SW1/2	On
VGA type select AT	SW1/2	Off
í Monitor resolution select 1024 x 768 interlaced	SW1/5	On
Monitor resolution select 1024 x 768 non interlaced	SW1/5	Off

DRAM CONFIGURATION				
Size	Bank 0	Bank 1	Bank 2	Bank 3
4MB	(1) 1M x 36	NONE	NONE	NONE
8MB	(1) 1M x 36	(1) 1M x 36	NONE	NONE
12MB	(1) 1M x 36	(1) 1M x 36	(1) 1M x 36	NONE
16MB	(1) 1M x 36	(1) 1M x 36	(1) 1M x 36	(1) 1M x 36
16MB	(1) 4M x 36	NONE	NONE	NONE
20MB	(1) 4M x 36	(1) 1M x 36	NONE	NONE
24MB	(1) 4M x 36	(1) 1M x 36	(1) 1M x 36	NONE
28MB	(1) 4M x 36	(1) 1M x 36	(1) 1M x 36	(1) 1M x 36
32MB	(1) 4M x 36	(1) 4M x 36	NONE	NONE
36MB	(1) 4M x 36	(1) 4M x 36	(1) 1M x 36	NONE
40MB	(1) 4M x 36	(1) 4M x 36	(1) 1M x 36	(1) 1M x 36
48MB	(1) 4M x 36	(1) 4M x 36	(1) 4M x 36	NONE
52MB	(1) 4M x 36	(1) 4M x 36	(1) 4M x 36	(1) 1M x 36
64MB	(1) 4M x 36	(1) 4M x 36	(1) 4M x 36	(1) 4M x 36

CACHE CONFIGURATION	
Size	Bank 0
16KB	(2) 8K x 8

Note: The location of the cache bank is unknown. Cache is factory installed and is not configurable.

Continued on next page...

DELL COMPUTER CORPORATION

SYSTEM V386DX-33

... continued from previous page

VIDEO MEMORY CONFIGURATION		
Size	Bank 0	Bank 1
256KB	(1) 256K x 8	NONE
512KB	(1) 256K x 8	(1) 256K x 8

Note: Bank 0 is factory installed and is not configurable.

VIDEO REFRESH RATE CONFIGURATION (800 x 600)			
Refresh rate	Colors	SW1/3	SW1/4
56Hz/56Hz	16/256	On	On
60Hz/60Hz	16/256	Off	On
72Hz/60Hz	16/256	Off	Off
72Hz/56Hz	16/256	On	Off

SELECTED MONITOR CONFIGURATION					
Type	SW1/1	SW1/2	SW1/3	SW1/4	SW1/5
Royal VGA (.39i)	Off	On	Off	On	On
Royal SVGA (.28i)	Off	On	Off	On	On
LiteOn SVGA (.28i)	Off	On	On	On	On
LiteOn UVGA (.28ni)	Off	On	Off	On	Off

Note: These settings represent the factory default settings.