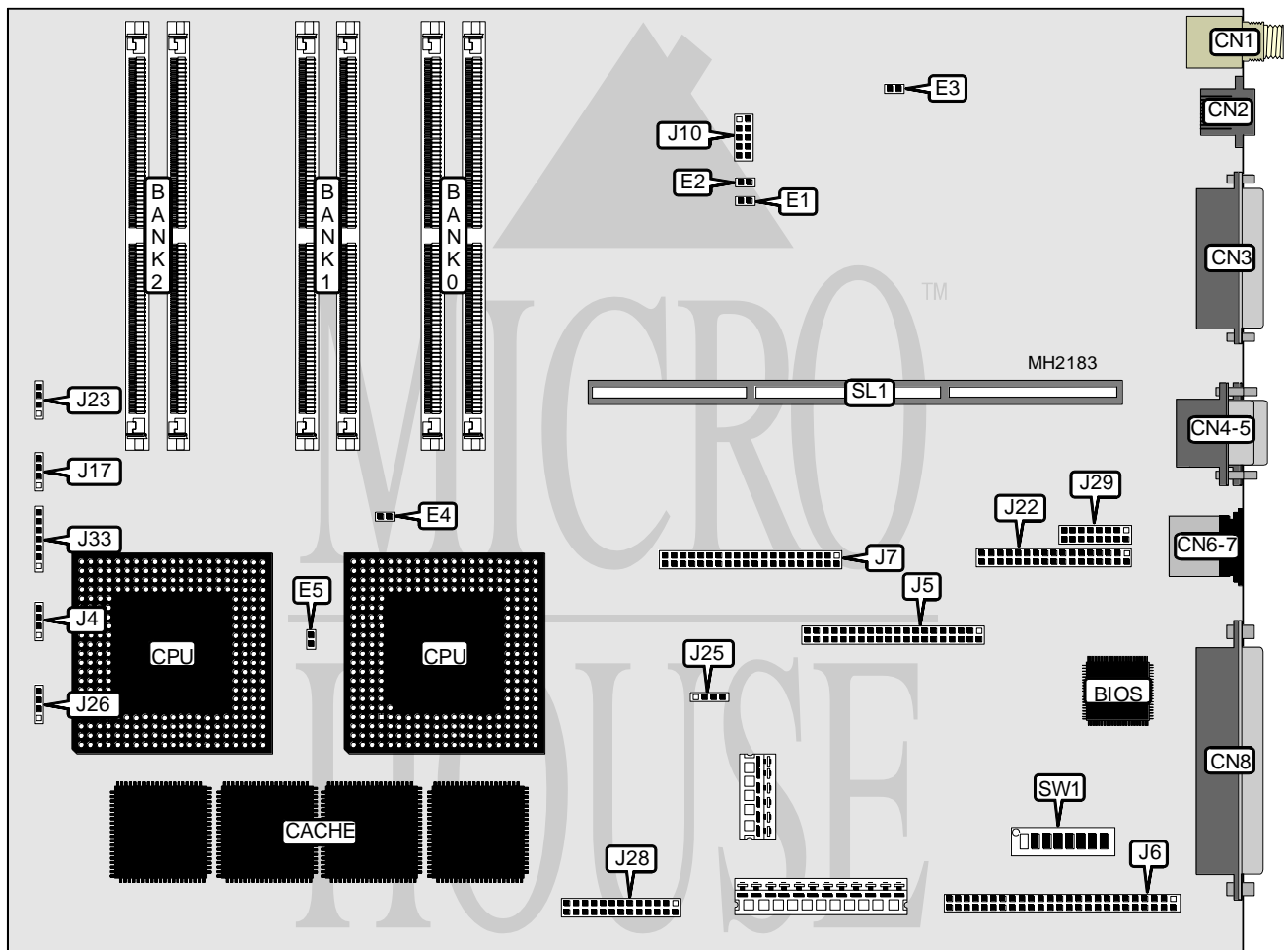


# AST RESEARCH, INC. PREMMIA GX

<b>Processor</b>	Pentium Overdrive/Pentium
<b>Processor Speed</b>	75(internal)/90(internal)/100(internal)MHz
<b>Chip Set</b>	AST
<b>Max. Onboard DRAM</b>	192MB
<b>Cache</b>	512KB
<b>BIOS</b>	AMI
<b>Dimensions</b>	330mm x 218mm
<b>I/O Options</b>	Floppy drive interface, IDE interface, parallel port, PS/2 mouse port, serial ports (2), SCSI port, SCSI interface, 10 base-T port, 10 base-5 port
<b>NPU Options</b>	None



Continued on next page . . .

**AST RESEARCH, INC.**  
**PREMMIA GX**

... continued from previous page

CONNECTIONS			
Purpose	Location	Purpose	Location
10 base-5 port	CN1	SCSI terminator	J6
10 base-T port	CN2	SCSI primary interface	J7
Parallel port	CN3	Front panel connector	J17
Serial port 2	CN4	Floppy drive interface	J22
Serial port 1	CN5	Speaker	J23
PS/2 mouse port	CN6	IDE interface LED	J25
Keyboard port	CN7	External battery	J26
SCSI port	CN8	Chassis fan power	J33
Chassis fan power	J4	Riser Card	SL1
IDE interface	J5		

USER CONFIGURABLE SETTINGS		
Function	Jumper/Switch	Position
í CMOS memory normal operation (ISA)	E3	Open
CMOS memory clear (ISA)	E3	Closed
í Factory configured - do not alter	J10	Open
í Factory configured - do not alter	J28	Open
í Factory configured - do not alter	J29	Open
í Flash BIOS write protect enabled	SW1/1	Off
Flash BIOS write protect disabled	SW1/1	On
í Password enabled	SW1/2	Off
Password disabled	SW1/2	On
í Monitor type select color	SW1/3	Off
Monitor type select monochrome	SW1/3	On
í CMOS memory normal operation (EISA)	SW1/4	Off
CMOS memory clear (EISA)	SW1/4	On
í System setup enabled	SW1/5	Off
System setup disabled	SW1/5	On
í Factory configured - do not alter	SW1/6	Off
í Factory configured - do not alter	SW1/7	Off

DRAM CONFIGURATION			
Size	Bank 0	Bank 1	Bank 2
4MB	(2) 512K x 36	NONE	NONE
8MB	(2) 1M x 36	NONE	NONE
12MB	(2) 1M x 36	(2) 512K x 36	NONE
16MB	(2) 1M x 36	(2) 1M x 36	NONE
20MB	(2) 1M x 36	(2) 1M x 36	(2) 512K x 36
24MB	(2) 1M x 36	(2) 1M x 36	(2) 1M x 36
28MB	(2) 2M x 36	(2) 1M x 36	(2) 512K x 36
32MB	(2) 2M x 36	(2) 1M x 36	(2) 1M x 36
36MB	(2) 2M x 36	(2) 2M x 36	(2) 512K x 36
40MB	(2) 2M x 36	(2) 2M x 36	(2) 1M x 36
44MB	(2) 4M x 36	(2) 1M x 36	(2) 512K x 36

Continued on next page. . .

# AST RESEARCH, INC.

## PREMMIA GX

... continued from previous page

DRAM CONFIGURATION (CON'T)			
Size	Bank 0	Bank 1	Bank 2
48MB	(2) 4M x 36	(2) 1M x 36	(2) 1M x 36
52MB	(2) 4M x 36	(2) 2M x 36	(2) 512K x 36
64MB	(2) 4M x 36	(2) 2M x 36	(2) 2M x 36
68MB	(2) 4M x 36	(2) 4M x 36	(2) 512K x 36
72MB	(2) 4M x 36	(2) 4M x 36	(2) 1M x 36
76MB	(2) 8M x 36	(2) 1M x 36	(2) 512K x 36
80MB	(2) 8M x 36	(2) 2M x 36	NONE
84MB	(2) 8M x 36	(2) 2M x 36	(2) 512K x 36
88MB	(2) 2M x 36	(2) 8M x 36	(2) 1M x 36
96MB	(2) 8M x 36	(2) 4M x 36	NONE
100MB	(2) 8M x 36	(2) 4M x 36	(2) 512K x 36
104MB	(2) 8M x 36	(2) 4M x 36	(2) 1M x 36
112MB	(2) 8M x 36	(2) 4M x 36	(2) 2M x 36
128MB	(2) 8M x 36	(2) 8M x 36	NONE
132MB	(2) 8M x 36	(2) 8M x 36	(2) 512K x 36
136MB	(2) 8M x 36	(2) 8M x 36	(2) 1M x 36
144MB	(2) 8M x 36	(2) 8M x 36	(2) 2M x 36
160MB	(2) 8M x 36	(2) 8M x 36	(2) 4M x 36
192MB	(2) 8M x 36	(2) 8M x 36	(2) 8M x 36

CACHE CONFIGURATION	
Size	Bank 0
512KB	(4) 128K x 8
Note: Cache is factory installed and is not configurable.	

CPU TYPE CONFIGURATION			
Type	E4	E5	SW1/8
Single processor	Closed	Open	Off
Dual processor	Open	Closed	On

CPU SPEED CONFIGURATION			
Internal	External	E1	E2
75iMHz	50MHz	Closed	Open
90iMHz	60MHz	Open	Closed
100iMHz	50MHz	Open	Open
100iMHz	66MHz	Closed	Closed