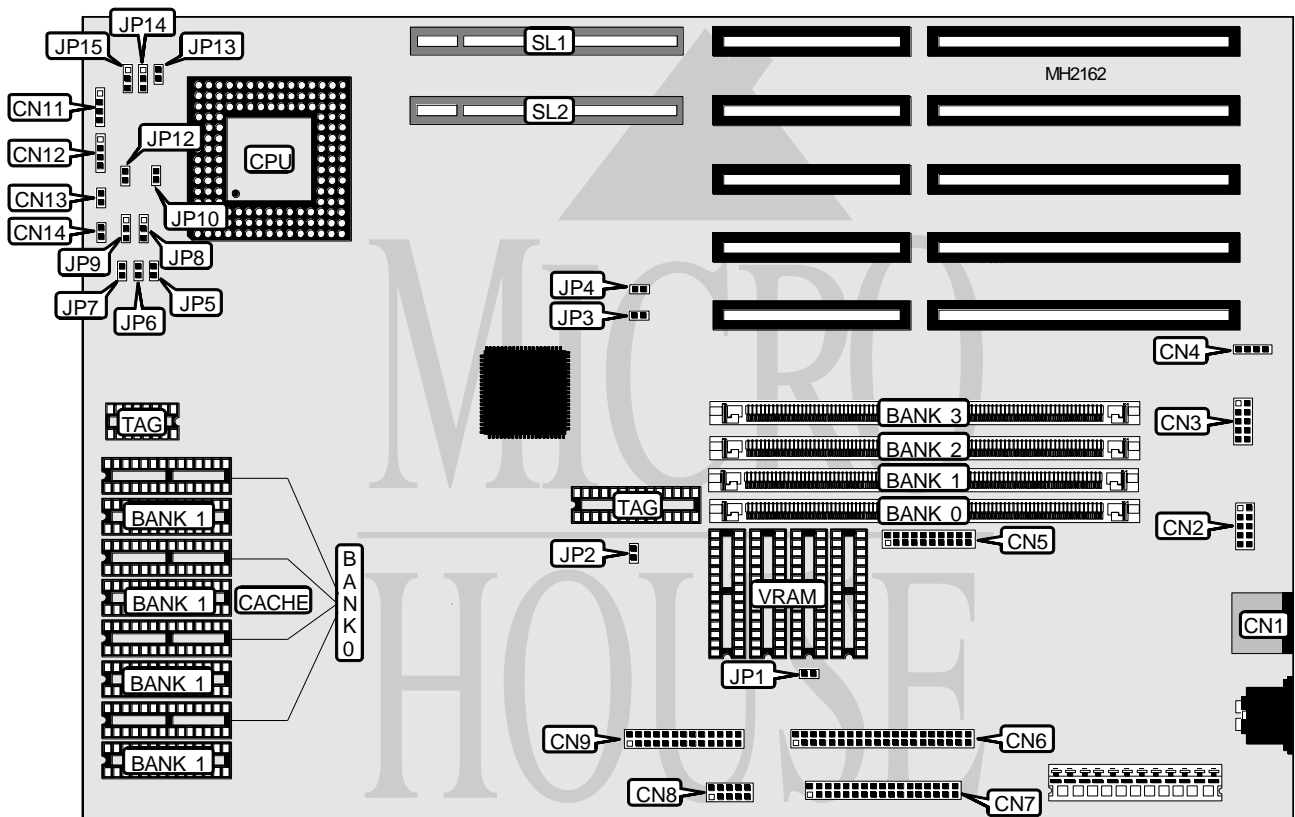


DELL COMPUTER CORPORATION SYSTEMS 4XX/V, 4XXS/V, 4XX/DV, 4XXS/DV

Processor	80486SX/80487SX/80486DX/ODP486SX/80486DX2
Processor Speed	33/50(internal)/66(internal)MHz
Chip Set	OPT1
Max. Onboard DRAM	64MB
Cache	128/256KB
BIOS	Unidentified
Dimensions	330mm x 218mm
I/O Options	32-bit VESA local bus slots (2), floppy drive interface, IDE interface, parallel port, PS/2 mouse port, serial ports (2), VGA feature connector, VGA port
NPU Options	None



CONNECTIONS			
Purpose	Location	Purpose	Location
PS/2 mouse port	CN1	VGA connector	CN8
Serial port 1	CN2	VGA feature connector	CN9
Serial port 2	CN3	IDE interface LED	CN11
External battery	CN4	Speaker	CN12
Parallel port	CN5	Power LED	CN13
IDE interface	CN6	Reset switch	CN14
Floppy drive interface	CN7	32-bit VESA local bus slots	SL1 & SL2

Continued next page...

DELL COMPUTER CORPORATION SYSTEMS 4XX/V, 4XXS/V, 4XX/DV, 4XXS/DV

... continued from previous page

USER CONFIGURABLE SETTINGS		
Function	Jumper	Position
í Built in VGA subsystem enabled	JP1	Closed
Built in VGA subsystem disabled	JP1	Open
í On board VGA disabled	JP2	Closed
í On board VGA enabled	JP2	Open
í VGA IRQ9 disabled	JP3	Closed
VGA IRQ9 enabled	JP3	Open
í On board mouse enabled (IRQ12)	JP4	Closed
On board mouse disabled (IRQ12)	JP4	Open
í Factory configured - do not alter	JP7	Closed
í 80486SX installed in PQFP	JP10	Open
80486SX not installed in PQFP	JP10	Closed
í Factory configured - do not alter	JP11	Open
í 256K of cache memory installed	JP12	Closed
Zero or 128K of cache memory installed	JP12	Open

Note: The exact location of JP11 on system board is unidentified by the manufacturer.

DRAM CONFIGURATION				
Size	Bank 0	Bank 1	Bank 2	Bank 3
4MB	(1) 1M x 36	NONE	NONE	NONE
8MB	(1) 1M x 36	(1) 1M x 36	NONE	NONE
12MB	(1) 1M x 36	(1) 1M x 36	(1) 1M x 36	NONE
16MB	(1) 1M x 36	(1) 1M x 36	(1) 1M x 36	(1) 1M x 36
16MB	(1) 4M x 36	NONE	NONE	NONE
20MB	(1) 4M x 36	(1) 1M x 36	NONE	NONE
24MB	(1) 4M x 36	(1) 1M x 36	(1) 1M x 36	NONE
28MB	(1) 4M x 36	(1) 1M x 36	(1) 1M x 36	(1) 1M x 36
32MB	(1) 4M x 36	(1) 4M x 36	NONE	NONE
36MB	(1) 4M x 36	(1) 4M x 36	(1) 1M x 36	NONE
40MB	(1) 4M x 36	(1) 4M x 36	(1) 1M x 36	(1) 1M x 36
48MB	(1) 4M x 36	(1) 4M x 36	(1) 4M x 36	NONE
52MB	(1) 4M x 36	(1) 4M x 36	(1) 4M x 36	(1) 1M x 36
64MB	(1) 4M x 36	(1) 4M x 36	(1) 4M x 36	(1) 4M x 36

CACHE CONFIGURATION				
Size	Bank 0	Bank 1	TAG (U42)	TAG (U27)
0KB	NONE	NONE	NONE	NONE
128KB	(4) 32K x 8	NONE	(1) 16K x 1	(1) 32K x 8
256KB	(4) 32K x 8	(4) 32K x 8	(1) 16K x 1	(1) 32K x 8

CACHE JUMPER CONFIGURATION		
Size	JP8	JP9
128KB	pins 1 & 2 closed	pins 1 & 2 closed
256KB	pins 2 & 3 closed	pins 2 & 3 closed

Continued next page...

DELL COMPUTER CORPORATION

SYSTEMS 4XX/V, 4XXS/V, 4XX/DV, 4XXS/DV

... continued from previous page.

CPU TYPE CONFIGURATION			
CPU Type	JP13	JP14	JP15
80486SX	Open	Open	pins 2 & 3 closed
80486DX	Closed	pins 1 & 2 closed	pins 1 & 2 closed
80486DX2	Closed	pins 1 & 2 closed	pins 1 & 2 closed

CPU SPEED CONFIGURATION		
Speed	JP5	JP6
33MHz	Open	Closed
50MHz	Closed	Open
66MHz	Open	Closed