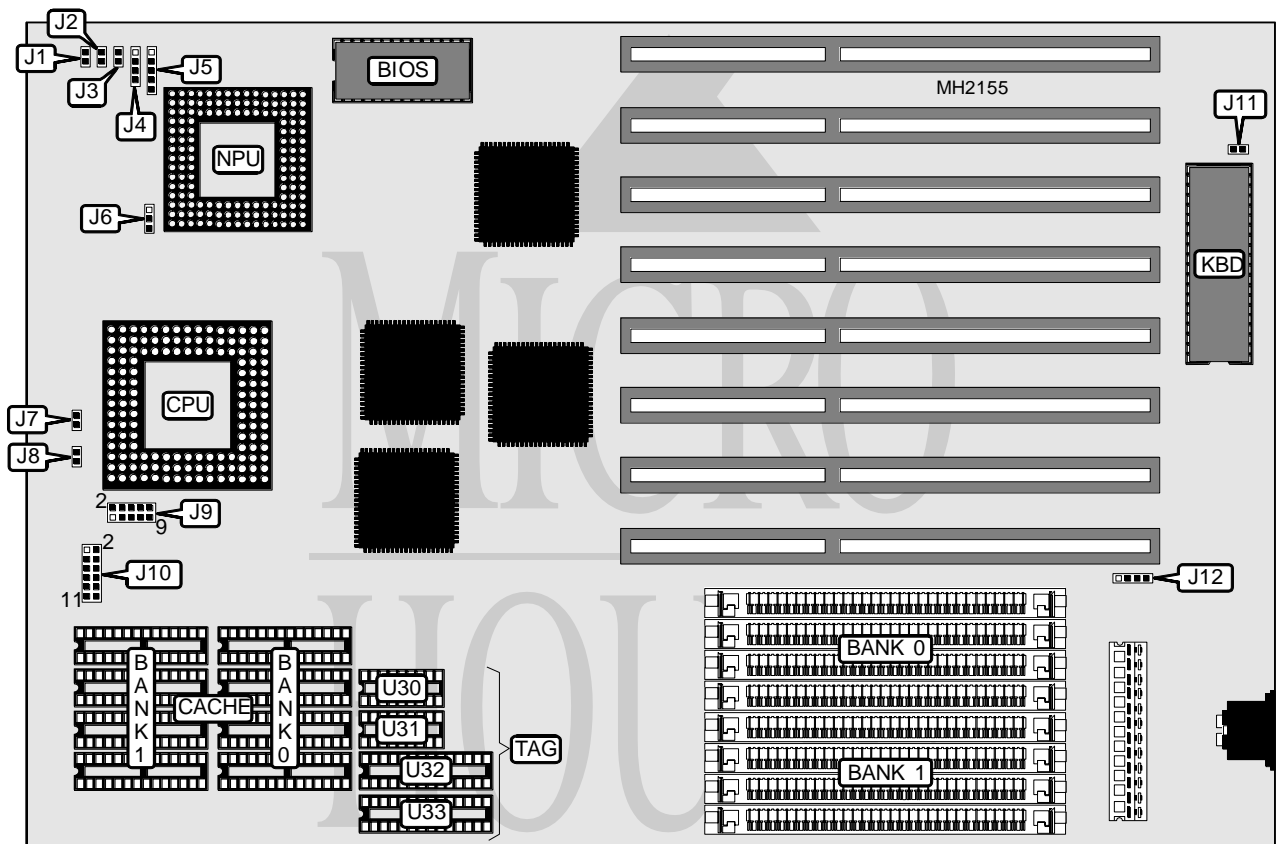


# DTK COMPUTER, INC.

## PLM-2531P/3331P/5031P

<b>Processor</b>	80486SX/80487SX/ODP80486SX/80486DX/80486DX2
<b>Processor Speed</b>	25/33/40/50(internal)/50/66(internal)MHz
<b>Chip Set</b>	OPTI
<b>Max. Onboard DRAM</b>	128MB
<b>Cache</b>	64/128/256KB
<b>BIOS</b>	AMI/DTK
<b>Dimensions</b>	330mm x 218mm
<b>I/O Options</b>	None
<b>NPU Options</b>	4167



### CONNECTIONS

Purpose	Location	Purpose	Location
Reset switch	J1	Speaker	J4
Turbo switch	J2	Power LED & keylock	J5
Turbo LED	J3	External battery	J12

Continued on next page...

## DTK COMPUTER, INC.

## PLM - 2531P / 3331P / 5031P

... continued from previous page

## USER CONFIGURABLE SETTINGS

Function	Jumper	Position
í Turbo switch enabled	J2	Closed
turbo switch disabled	J2	Open
í Monitor type select monochrome	J11	Open
Monitor type select color	J11	Closed

## DRAM CONFIGURATION

Size	Bank 0	Bank 1
4MB	(4) 1M x 9	NONE
8MB	(4) 1M x 9	(4) 1M x 9
16MB	(4) 4M x 9	NONE
20MB	(4) 1M x 9	(4) 4M x 9
32MB	(4) 4M x 9	(4) 4M x 9
64MB	(4) 16M x 9	NONE
128MB	(4) 16M x 9	(4) 16M x 9

## CACHE CONFIGURATION

Size	Bank 0	Bank 1	TAG (U30)	Dirty (U31)	TAG (U32)	TAG (U33)
64KB	(4) 8K x 8	(4) 8K x 8	(1) 8K x 1	(1) 8K x 1	(1) 8K x 8	NONE
128KB	(4) 32K x 8	NONE	(1) 8K x 1	(1) 8K x 1	(1) 8K x 8	NONE
256KB	(4) 32K x 8	(4) 32K x 8	(1) 8K x 1	(1) 8K x 1	NONE	(1) 32K x 8

## CACHE JUMPER CONFIGURATION

Size	J10
64KB	pins 9 & 10 closed
128KB	pins 1 & 2, 5 & 6, 11 & 12 closed
256KB	pins 1 & 2, 3 & 4, 5 & 6, 7 & 8, 9 & 10 closed

## CPU TYPE CONFIGURATION

Type	J9
80486SX	pins 9 & 10 closed
80487SX	pins 3 & 4, 5 & 6, 7 & 8 closed
ODP80486SX	pins 3 & 4, 5 & 6, 7 & 8 closed
80486DX/DX2	pins 1 & 2, 3 & 4, 5 & 6 closed

## CPU SPEED CONFIGURATION

Speed	J6	J7	J8
25MHz	pins 2 & 3 closed	Open	Closed
33MHz	pins 1 & 2 closed	Closed	Open
40MHz	pins 2 & 3 closed	Open	Closed
50iMHz	pins 2 & 3 closed	Open	Closed
50MHz	pins 2 & 3 closed	Open	Closed
66iMHz	pins 1 & 2 closed	Closed	Open