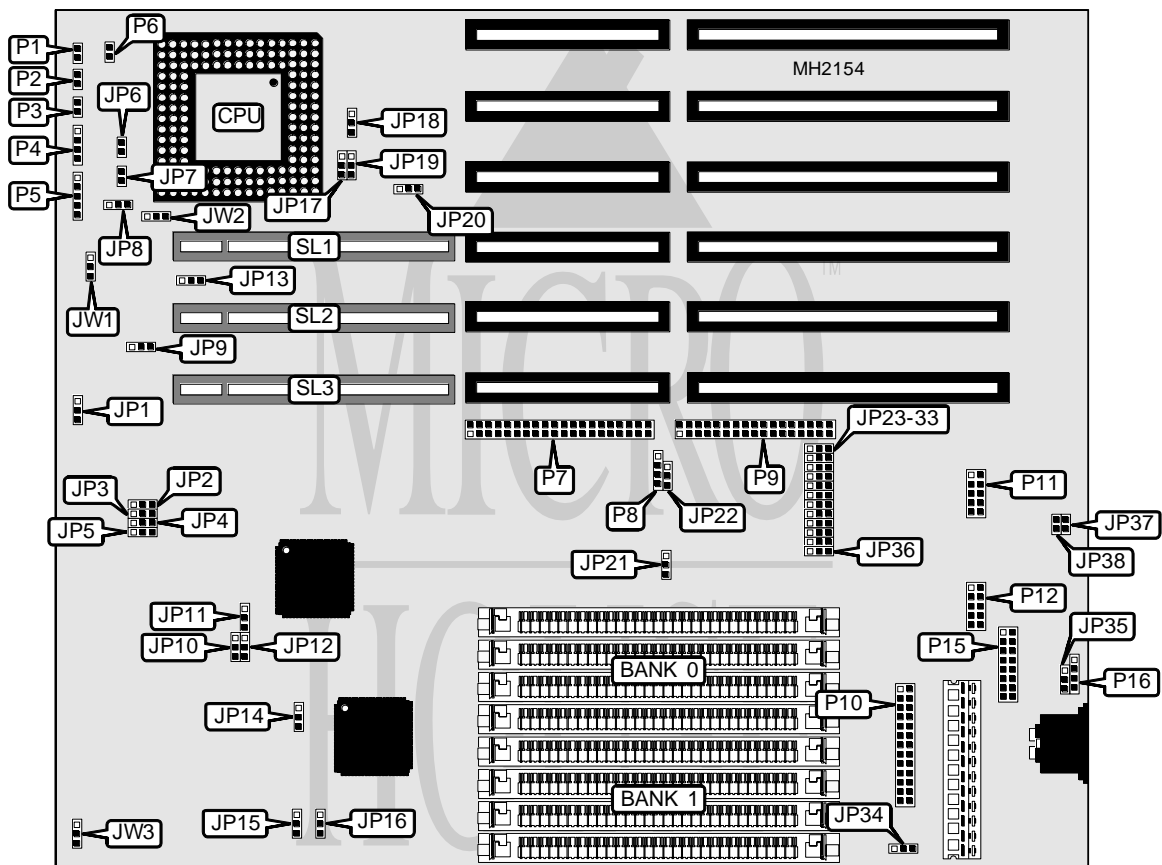


OCEAN INFORMATION SYSTEMS, INC.

HIPPO PRO 486 REV 1.2

Processor	80486SX/80487SX/80486DX/80486DX2/Pentium Overdrive
Processor Speed	25/33/50(internal)/50/66(internal)MHz
Chip Set	UNI
Max. Onboard DRAM	128MB
Cache	None
BIOS	AMI
Dimensions	330mm x 218mm
I/O Options	32-bit VESA local bus slots (3), floppy drive interface, game port, IDE interface, parallel port, serial ports (2)
NPU Options	None



CONNECTIONS			
Purpose	Location	Purpose	Location
Reset switch	P1	Floppy drive interface	P9
Turbo switch	P2	Parallel port	P10
Turbo LED	P3	Serial port 1	P11
Speaker	P4	Serial port 2	P12
Power LED & keylock	P5	Game interface	P15
Chassis fan power	P6	External battery	P16
IDE interface	P7	32-bit VESA Local bus slots	SL1 - SL3
IDE interface LED	P8		

Continued on next page. . .

OCEAN INFORMATION SYSTEMS, INC.
HIPPO PRO 486 REV 1.2

... continued from previous page

USER CONFIGURABLE SETTINGS		
Function	Jumper	Position
í Factory configured - do not alter	JP1	pins 1 & 2 closed
í Factory configured - do not alter	JP3	pins 2 & 3 closed
í Factory configured - do not alter	JP4	Open
í Factory configured - do not alter	JP6	Open
í Factory configured - do not alter	JP7	Open
í Factory configured - do not alter	JP8	pins 1 & 2 closed
í Factory configured - do not alter	JP9	Open
í Factory configured - do not alter	JP11	Open
í Factory configured - do not alter	JP13	pins 1 & 2 closed
í Factory configured - do not alter	JP14	pins 1 & 2 closed
í Monitor type select monochrome	JP15	pins 2 & 3 closed
Monitor type select color	JP15	pins 1 & 2 closed
í Factory configured - do not alter	JP16	pins 1 & 2 closed
í Factory configured - do not alter	JP20	pins 1 & 2 closed
í Game interface enabled	JP21	pins 1 & 2 closed
Game interface disabled	JP21	pins 2 & 3 closed
í Factory configured - do not alter	JP22	Open
í Factory configured - do not alter	JP26	pins 1 & 2 closed
í Floppy drive interface enabled	JP33	pins 1 & 2 closed
Floppy drive interface disabled	JP33	pins 2 & 3 closed
í CMOS memory normal operation	JP34	pins 1 & 2 closed
CMOS memory clear	JP34	pins 2 & 3 closed
í Factory configured - do not alter	JP35	Open
í Factory configured - do not alter	JP37	Open
í Factory configured - do not alter	JP38	Open
í Factory configured - do not alter	JW1	pins 1 & 2 closed
í Factory configured - do not alter	JW2	pins 2 & 3 closed
í Factory configured - do not alter	JW3	Open

DRAM CONFIGURATION		
Size	Bank 0	Bank 1
1MB	(4) 256K x 9	NONE
2MB	(4) 256K x 9	(4) 256K x 9
4MB	(4) 1M x 9	NONE
5MB	(4) 256K x 9	(4) 1M x 9
8MB	(4) 1M x 9	(4) 1M x 9
16MB	(4) 4M x 9	NONE
20MB	(4) 1M x 9	(4) 4M x 9
32MB	(4) 4M x 9	(4) 4M x 9
80MB	(4) 4M x 9	(4) 16M x 9
128MB	(4) 16M x 9	(4) 16M x 9

Continued on next page. . .

OCEAN INFORMATION SYSTEMS, INC.

HIPPO PRO 486 REV 1.2

... continued from previous page

CPU TYPE CONFIGURATION			
Type	JP17	JP18	JP19
80486SX	pins 2 & 3 closed	Open	pins 1 & 2 closed
80487SX	pins 1 & 2 closed	pins 1 & 2 closed	pins 2 & 3 closed
80486DX/DX2	pins 1 & 2 closed	pins 2 & 3 closed	pins 2 & 3 closed

CPU SPEED CONFIGURATION	
Speed	JP2
25MHz	pins 1 & 2 closed
33MHz	pins 2 & 3 closed
50MHz	pins 1 & 2 closed
66MHz	pins 2 & 3 closed

SERIAL PORT 1 CONFIGURATION		
Port 1	JP29	JP30
í COM1	pins 1 & 2 closed	pins 1 & 2 closed
Disabled	pins 2 & 3 closed	pins 2 & 3 closed

SERIAL PORT 2 CONFIGURATION		
Port 2	JP31	JP32
í COM2	pins 1 & 2 closed	pins 1 & 2 closed
Disabled	pins 2 & 3 closed	pins 2 & 3 closed

PARALLEL PORT CONFIGURATION		
Setting	JP27	JP28
278H	pins 1 & 2 closed	pins 1 & 2 closed
378H	pins 2 & 3 closed	pins 1 & 2 closed
380H	pins 1 & 2 closed	pins 2 & 3 closed
Disabled	pins 2 & 3 closed	pins 2 & 3 closed

FLOPPY DRIVE CONFIGURATION (2.88MB ONLY)			
Type	JP23	JP24	JP25
2.88MB	pins 1 & 2 closed	pins 1 & 2 closed	pins 1 & 2 closed
2.88MB not installed	pins 2 & 3 closed	pins 2 & 3 closed	pins 2 & 3 closed

ON BOARD IDE CONFIGURATION		
Type	JP5	JP36
í On board IDE enabled	pins 2 & 3 closed	pins 1 & 2 closed
On board IDE disabled	pins 1 & 2 closed	pins 2 & 3 closed

IDE ACCESS TIME CONFIGURATION				
Mode	Cycle time (ms)	Access time (ms)	JP10	JP12
1	390	120	pins 1 & 2 closed	pins 2 & 3 closed
0	600	180	pins 2 & 3 closed	pins 2 & 3 closed
2	240	190	pins 2 & 3 closed	pins 1 & 2 closed
3	150	90	pins 1 & 2 closed	pins 1 & 2 closed