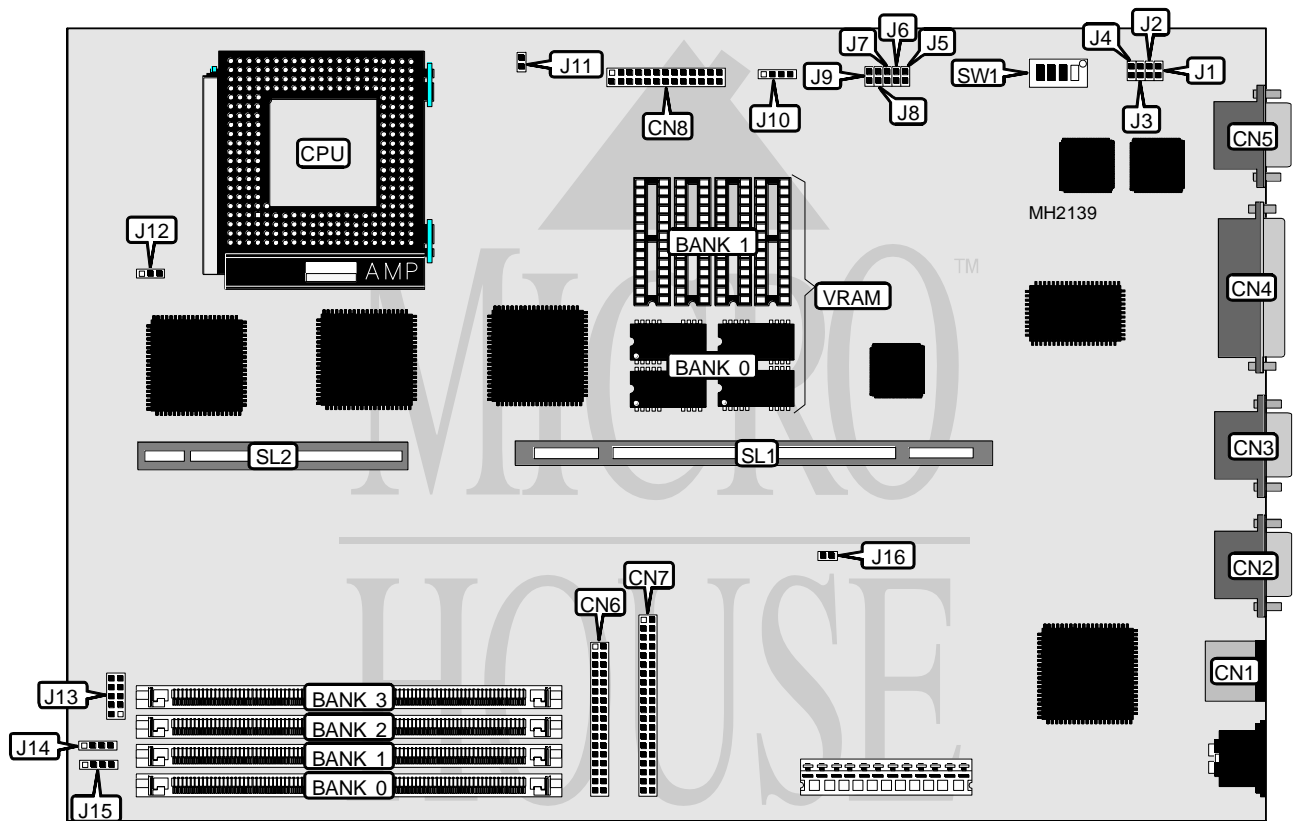


DELL COMPUTER CORPORATION POWEREDGE SP4XX

Processor	80486DX/80486DX2
Processor Speed	33/50(internal)/66(internal)MHz
Chip Set	Intel
Max. Onboard DRAM	128MB
Cache	256KB (on external cache card)
BIOS	AMI
Dimensions	330mm x 218mm
I/O Options	32-bit riser card, external cache card, floppy drive interface, IDE interface, parallel port, PS/2 mouse port, serial ports (2), VGA feature connector, VGA port
NPU Options	None



CONNECTIONS			
Purpose	Location	Purpose	Location
PS/2 mouse port	CN1	IDE interface LED	J10
Serial port 1	CN2	Audio interface	J11
Serial port 2	CN3	Chassis fan power	J12
Parallel port	CN4	Control panel connector	J13
VGA port	CN5	Speaker	J14
Floppy drive interface	CN6	External battery	J15
IDE interface	CN7	Riser card	SL1
VGA feature connector	CN8	External cache card	SL2

Continued on next page...

DELL COMPUTER CORPORATION POWEREDGE SP4XX

... continued from previous page

USER CONFIGURABLE SETTINGS		
Function	Jumper/Switch	Position
í Factory configured - do not alter	J1	Open
í Integrated SCSI host adapter is terminated	J2	Closed
Integrated SCSI host adapter is not terminated	J2	Open
í EISA configuration settings retained at next system boot	J3	Closed
EISA configuration settings not retained at next systme boot	J3	Open
í Factory configured - do not alter	J4	Open
í Factory configured - do not alter	J6	Open
í Factory configured - do not alter	J8	Open
í Factory configured - do not alter	J9	Open
í Factory configured - do not alter	J16	Open
í On board video enabled	SW1/0	On
On board video disabled	SW1/0	Off
í CMOS memory normal operation	SW1/1	On
CMOS memory clear	SW1/1	Off
í I/O controller address 26Eh - 26Fh	SW1/2	On
I/O controller address 398h - 399h	SW1/2	Off
í Flash BIOS write protect enabled	SW1/3	On
Flash BIOS write protect disabled	SW1/3	Off

DRAM CONFIGURATION				
Size	Bank 0	Bank 1	Bank 2	Bank 3
8MB	(1) 1M x 36	(1) 1M x 36	NONE	NONE
16MB	(1) 1M x 36	(1) 1M x 36	(1) 1M x 36	(1) 1M x 36
16MB	(1) 2M x 36	(1) 2M x 36	NONE	NONE
24MB	(1) 2M x 36	(1) 2M x 36	(1) 1M x 36	(1) 1M x 36
24MB	(1) 1M x 36	(1) 1M x 36	(1) 2M x 36	(1) 2M x 36
32MB	(1) 4M x 36	(1) 4M x 36	NONE	NONE
32MB	(1) 2M x 36	(1) 2M x 36	(1) 2M x 36	(1) 2M x 36
40MB	(1) 1M x 36	(1) 1M x 36	(1) 4M x 36	(1) 4M x 36
40MB	(1) 4M x 36	(1) 4M x 36	(1) 1M x 36	(1) 1M x 36
48MB	(1) 2M x 36	(1) 2M x 36	(1) 4M x 36	(1) 4M x 36
48MB	(1) 4M x 36	(1) 4M x 36	(1) 2M x 36	(1) 2M x 36
64MB	(1) 8M x 36	(1) 8M x 36	NONE	NONE
64MB	(1) 4M x 36	(1) 4M x 36	(1) 4M x 36	(1) 4M x 36
72MB	(1) 1M x 36	(1) 1M x 36	(1) 8M x 36	(1) 8M x 36
72MB	(1) 8M x 36	(1) 8M x 36	(1) 1M x 36	(1) 1M x 36
80MB	(1) 2M x 36	(1) 2M x 36	(1) 8M x 36	(1) 8M x 36
80MB	(1) 8M x 36	(1) 8M x 36	(1) 2M x 36	(1) 2M x 36
96MB	(1) 4M x 36	(1) 4M x 36	(1) 8M x 36	(1) 8M x 36
96MB	(1) 8M x 36	(1) 8M x 36	(1) 4M x 36	(1) 4M x 36
128MB	(1) 8M x 36	(1) 8M x 36	(1) 8M x 36	(1) 8M x 36

Continued on next page. . .

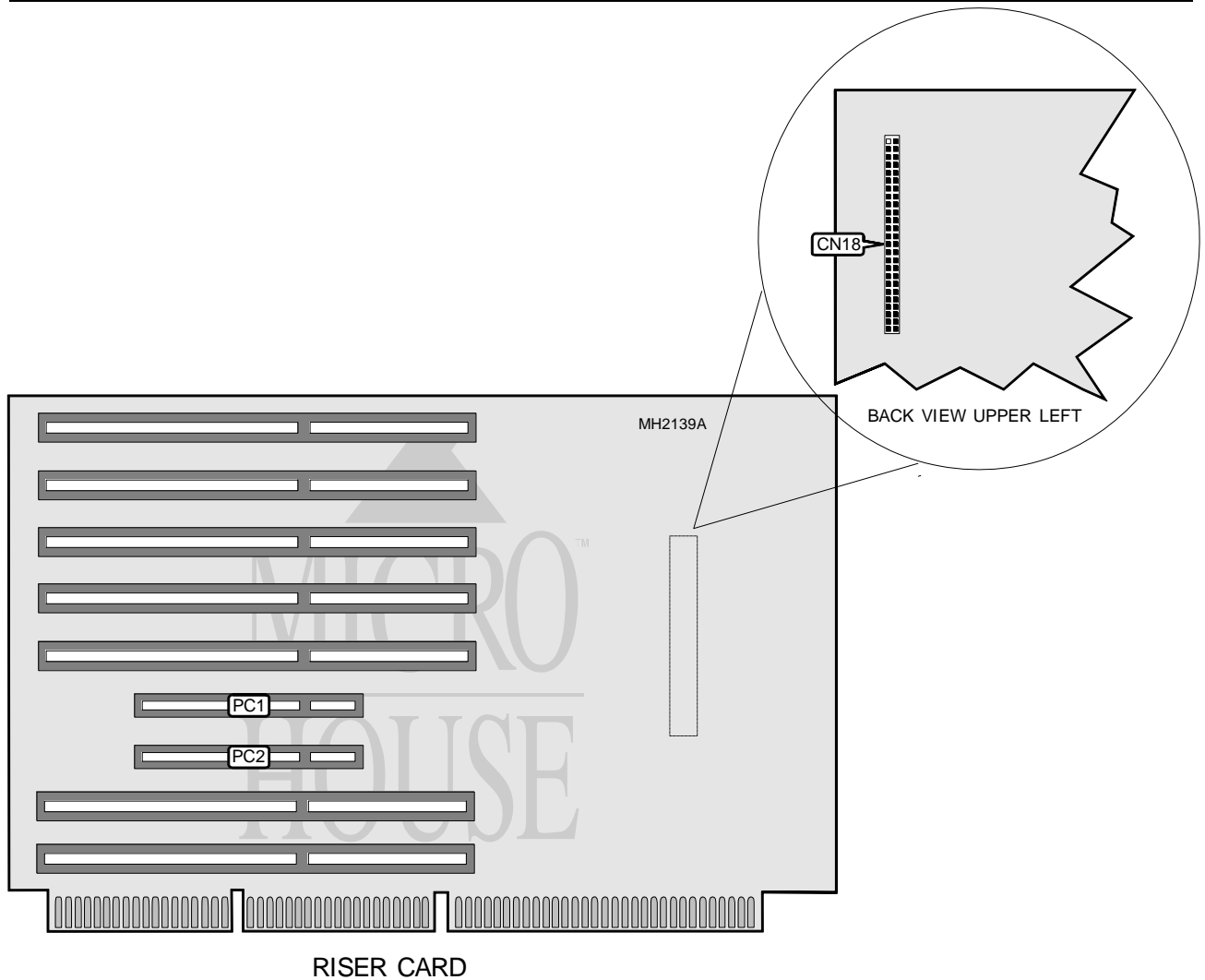
DELL COMPUTER CORPORATION POWEREDGE SP4XX

... continued from previous page

CPU SPEED CONFIGURATION		
Speed	J5	J7
33MHz	Open	Closed
50iMHz	Closed	Open
66iMHz	Open	Closed

VIDEO MEMORY CONFIGURATION		
Size	Bank 0	Bank 1
512KB	(4) 256K x 4	NONE
1MB	(4) 256K x 4	(4) 256K x 4

Note: Bank 0 is factory installed and is not configurable.

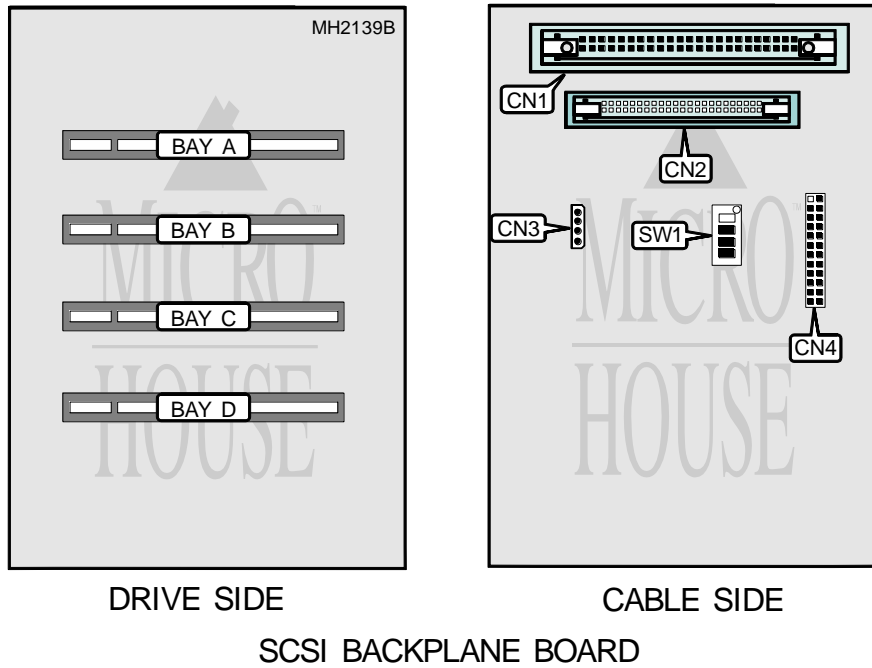


CONNECTIONS			
Purpose	Location	Purpose	Location
SCSI interface	CN18	32-bit PCI slots	PC1 & PC2

Continued on next page...

DELL COMPUTER CORPORATION POWEREDGE SP4XX

... continued from previous page



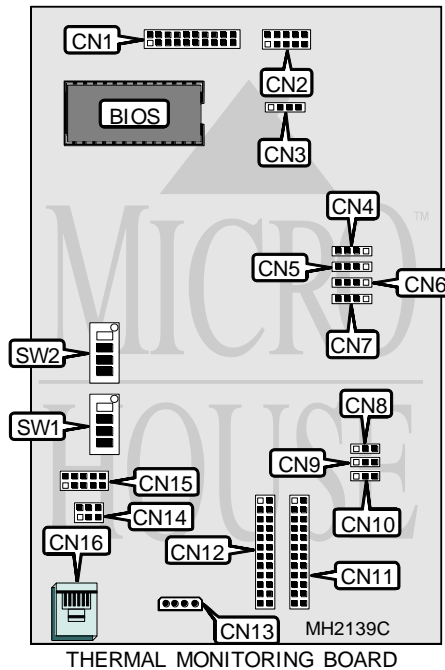
CONNECTIONS			
Purpose	Location	Purpose	Location
Narrow SCSI port	CN1	Power connector	CN3
Wide SCSI port	CN2	Thermal monitoring board port	CN4

SCSI BUS ID CONFIGURATION				
Host adapter	SW1/0	SW1/1	SW1/2	SW1/3
DSA controller card	On	Off	Off	On
Non DSA host adapter	Off	Off	Off	Off

Continued on next page...

DELL COMPUTER CORPORATION POWEREDGE SP4XX

... continued from previous page



CONNECTIONS

Purpose	Location	Purpose	Location
Manufacturer's connection	CN1	Fan connector	CN9
Panel connector	CN2	Fan connector	CN10
Speaker	CN3	SCSI connector (A)	CN11
Temp connector	CN4	SCSI connector (B)	CN12
Temp connector	CN5	Power connector	CN13
Temp connector	CN6	Server management connector	CN14
Temp connector	CN7	Main board connector	CN15
Fan connector	CN8	Test connector	CN16

SYSTEM TYPE CONFIGURATION

System type	SW1/0	SW1/1	SW1/2	SW1/3
PowerEdge SP486	Off	On	On	N/A

Note: These are default settings and should not be altered.

SYSTEM ID CONFIGURATION

System ID	SW2/0	SW2/1	SW2/2	SW2/3
Host computer system	On	On	On	N/A

Note: These are default settings and should not be altered.