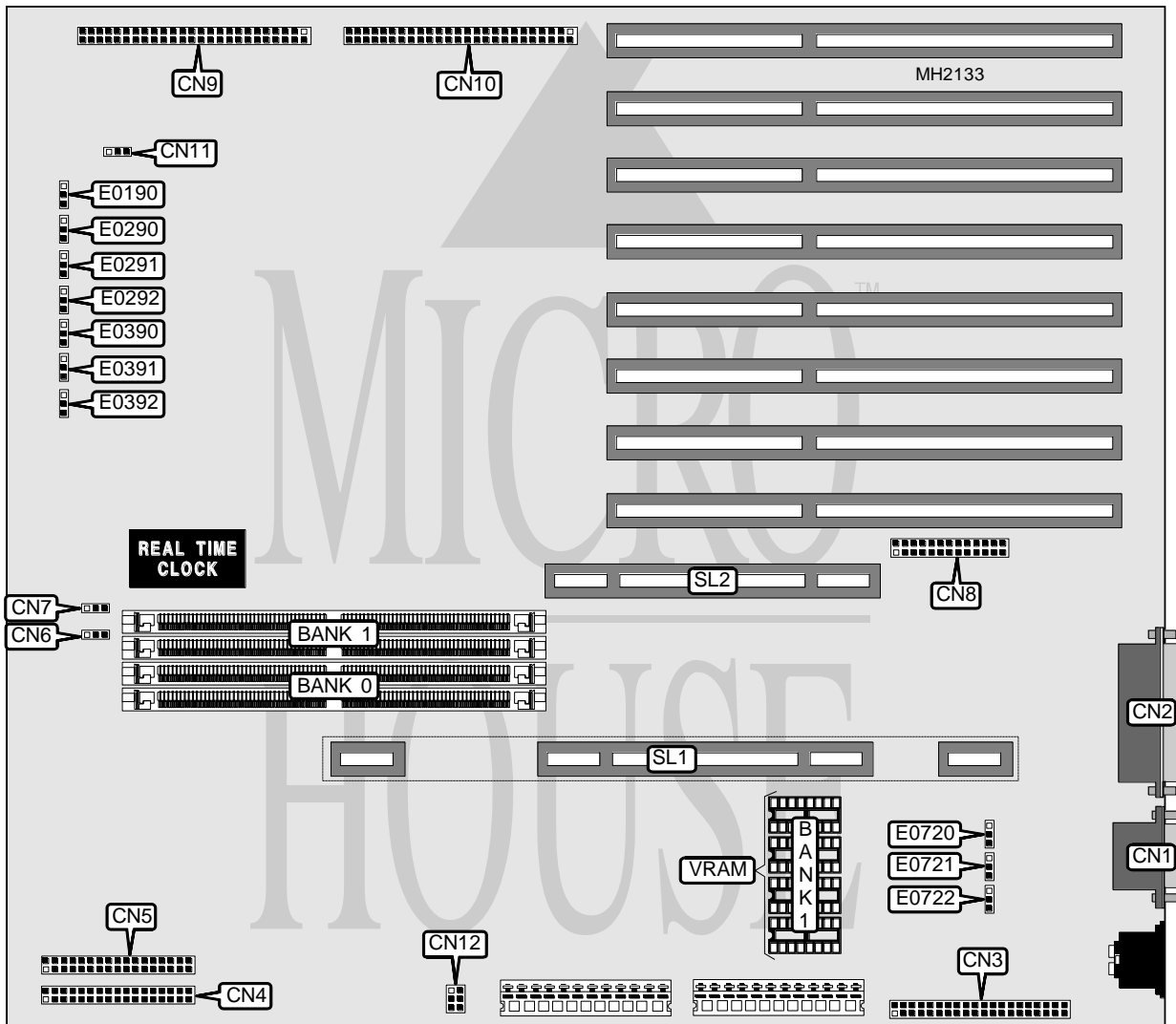


HEWLETT-PACKARD COMPANY HP NETSERVER LM

Processor	80486DX/80486DX2/Pentium (depends on CPU card installed)
Processor Speed	33/60/66(internal)/66/90MHz (depends on CPU card installed)
Chip Set	Hewlett Packard
Max. Onboard DRAM	384MB (256MB on external memory card)
Cache	None
BIOS	Phoenix
Dimensions	330mm x 218mm
I/O Options	32-bit external memory card, 32-bit CPU card, floppy drive interface, IDE interface, SCSI interface (2), parallel port, VGA feature connector, VGA port
NPU Options	None



Continued on next page. . .

HEWLETT-PACKARD COMPANY

HP NETSERVER LM

... continued from previous page

CONNECTIONS			
Purpose	Location	Purpose	Location
VGA port	CN1	VGA feature connector	CN8
Parallel port	CN2	SCSI - 2 connector (channel B)	CN9
IDE interface	CN3	SCSI - 2 connector (channel A)	CN10
Control panel connector	CN4	IDE interface LED	CN11
Floppy drive interface	CN5	External battery	CN12
Chassis fan power	CN6	32-bit CPU card	SL1
IDE interface LED	CN7	32-bit external memory card	SL2

USER CONFIGURABLE SETTINGS		
Function	Jumper	Position
í Flash BIOS write protect enabled	E0190	pins 1 & 2 closed
Flash BIOS write protect disabled	E0190	pins 2 & 3 closed
í On board video enabled	E0290	pins 1 & 2 closed
On board video disabled	E0290	pins 2 & 3 closed
í Floppy drive write enabled	E0291	pins 2 & 3 closed
Floppy drive write disabled	E0291	pins 1 & 2 closed
í CMOS memory normal operation	E0292	pins 1 & 2 closed
CMOS memory clear	E0292	pins 2 & 3 closed
í Password enabled	E0390	pins 2 & 3 closed
Password disabled	E0390	pins 1 & 2 closed
í Flash BIOS write protect enabled	E0721	pins 1 & 2 closed
Flash BIOS write protect disabled	E0721	pins 2 & 3 closed
í I/O address select 46E8H	E0722	pins 1 & 2 closed
I/O address select 03C3H	E0722	pins 2 & 3 closed

DRAM CONFIGURATION		
Size	Bank 0	Bank 1
8MB	(2) 1M x 36	NONE
16MB	(2) 1M x 36	(2) 1M x 36
16MB	(2) 2M x 36	NONE
24MB	(2) 2M x 36	(2) 1M x 36
32MB	(2) 2M x 36	(2) 2M x 36
32MB	(2) 4M x 36	NONE
40MB	(2) 4M x 36	(2) 1M x 36
48MB	(2) 4M x 36	(2) 2M x 36
64MB	(2) 4M x 36	(2) 4M x 36
64MB	(2) 8M x 36	NONE
72MB	(2) 8M x 36	(2) 1M x 36
80MB	(2) 8M x 36	(2) 2M x 36
96MB	(2) 8M x 36	(2) 4M x 36
128MB	(2) 8M x 36	(2) 8M x 36

Continued on next page. . .

HEWLETT-PACKARD COMPANY

HP NETSERVER LM

... continued from previous page

DRAM JUMPER CONFIGURATION		
Size installed	E0391	E0392
1M x 36 or 2M x 36	pins 1 & 2 closed	pins 1 & 2 closed
4M x 36 or 8M x 36	pins 2 & 3 closed	pins 2 & 3 closed

VIDEO MEMORY CONFIGURATION		
Size	Bank 0	Bank 1
512KB	(4) 256K x 4	NONE
1MB	(4) 256K x 4	(4) 256K x 4

Note: The location of Bank 0 is unidentified.

VIDEO JUMPER CONFIGURATION	
Size	E0720
512KB	pins 1 & 2 closed
1MB	pins 2 & 3 closed