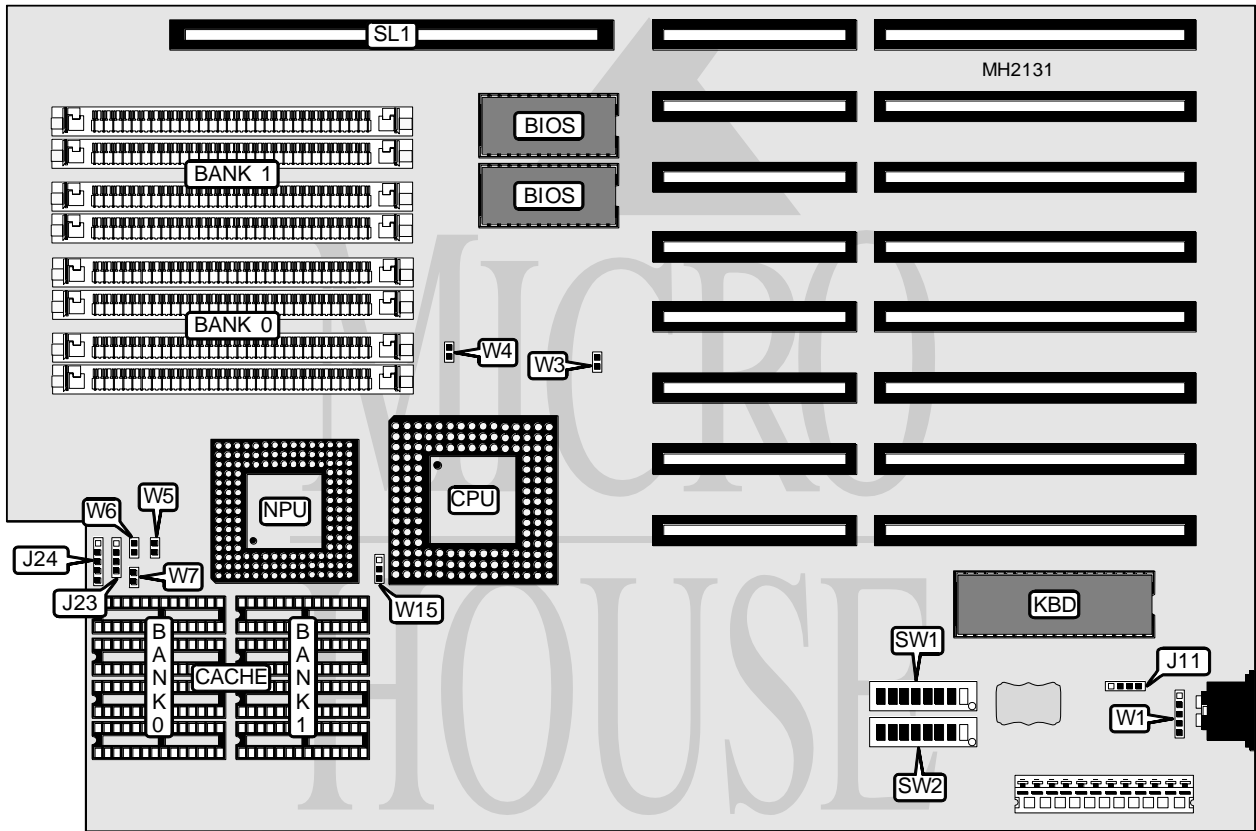


MICRONICS COMPUTERS, INC. 486DX2/50 SYSTEM BOARD

Processor 80486DX2
Processor Speed 50(internal)MHz
Chip Set Micronics
Max. Onboard DRAM 64MB (32MB on external memory board)
Cache 64/256KB
BIOS AMI
Dimensions 330mm x 218mm
I/O Options 32-bit external memory card
NPU Options None



CONNECTIONS			
Purpose	Location	Purpose	Location
External battery	J11	Turbo LED	W5
Speaker	J23	Reset switch	W6
Power LED & keylock	J24	Turbo switch	W7
External keyboard connector	W1	32-bit external memory card	SL1

Continued on next page. . .

MICRONICS COMPUTERS, INC.

486DX2/50 SYSTEM BOARD

... continued from previous page

USER CONFIGURABLE SETTINGS		
Function	Switch	Position
í Factory configured - do not alter	SW1/1	On
í Factory configured - do not alter	SW1/2	Off
í Factory configured - do not alter	SW1/3	Off
í I/O delay enabled	SW1/4	Off
I/O delay disabled	SW1/4	On
í Factory configured - do not alter	SW1/5	Off
í Video BIOS cache enabled	SW1/6	Off
Video BIOS cache disabled	SW1/6	On
í Factory configured - do not alter	SW1/7	Off
í Factory configured - do not alter	SW1/8	Off
í Factory configured - do not alter	SW2/6	On
í Cache enabled	SW2/7	Off
Cache disabled	SW2/7	On
í Cache enabled	SW2/8	Off
Cache disabled	SW2/8	On

DRAM CONFIGURATION				
Size	Bank 0	Bank 1	Bank 2	Bank 3
1MB	(4) 256K x 9	NONE	NONE	NONE
2MB	(4) 256K x 9	(4) 256K x 9	NONE	NONE
3MB	(4) 256K x 9	(4) 256K x 9	(4) 256K x 9	NONE
4MB	(4) 256K x 9	(4) 256K x 9	(4) 256K x 9	(4) 256K x 9
4MB	(4) 1M x 9	NONE	NONE	NONE
5MB	(4) 256K x 9	(4) 1M x 9	NONE	NONE
6MB	(4) 256K x 9	(4) 256K x 9	(4) 1M x 9	NONE
7MB	(4) 256K x 9	(4) 256K x 9	(4) 256K x 9	(4) 1M x 9
8MB	(4) 1M x 9	(4) 1M x 9	NONE	NONE
9MB	(4) 256K x 9	(4) 1M x 9	(4) 1M x 9	NONE
10MB	(4) 256K x 9	(4) 256K x 9	(4) 1M x 9	(4) 1M x 9
12MB	(4) 1M x 9	(4) 1M x 9	(4) 1M x 9	NONE
13MB	(4) 256K x 9	(4) 1M x 9	(4) 1M x 9	(4) 1M x 9
16MB	(4) 1M x 9	(4) 1M x 9	(4) 1M x 9	(4) 1M x 9
16MB	(4) 4M x 9	NONE	NONE	NONE
20MB	(4) 1M x 9	(4) 4M x 9	NONE	NONE
24MB	(4) 1M x 9	(4) 1M x 9	(4) 4M x 9	NONE
28MB	(4) 1M x 9	(4) 1M x 9	(4) 1M x 9	(4) 4M x 9
32MB	(4) 4M x 9	(4) 4M x 9	NONE	NONE
36MB	(4) 1M x 9	(4) 4M x 9	(4) 4M x 9	NONE
40MB	(4) 1M x 9	(4) 1M x 9	(4) 4M x 9	(4) 4M x 9
48MB	(4) 4M x 9	(4) 4M x 9	(4) 4M x 9	NONE
52MB	(4) 1M x 9	(4) 4M x 9	(4) 4M x 9	(4) 4M x 9
64MB	(4) 4M x 9	(4) 4M x 9	(4) 4M x 9	(4) 4M x 9

Note: Banks 2 & 3 are located on the external memory card.

Continued on next page. . .

MICRONICS COMPUTERS, INC.

486DX2/50 SYSTEM BOARD

... continued from previous page

DRAM SWITCH CONFIGURATION					
Size	SW2/1	SW2/2	SW2/3	SW2/4	SW2/5
1MB	On	On	On	On	On
2MB	Off	On	On	On	On
3MB	On	Off	On	On	On
4MB	Off	Off	On	On	On
4MB	On	On	Off	On	On
5MB	On	On	Off	Off	On
6MB	On	Off	On	Off	On
7MB	Off	On	On	Off	On
8MB	Off	On	Off	On	On
9MB	On	Off	Off	Off	On
10MB	Off	Off	On	Off	On
12MB	On	Off	Off	On	Off
13MB	Off	Off	Off	Off	On
16MB	Off	Off	Off	On	On
16MB	On	On	Off	On	Off
20MB	On	On	Off	Off	Off
24MB	On	Off	On	Off	Off
28MB	Off	On	On	Off	Off
32MB	Off	On	Off	On	Off
36MB	On	Off	Off	Off	Off
40MB	Off	Off	On	Off	Off
48MB	On	Off	Off	On	Off
52MB	Off	Off	Off	Off	Off
64MB	Off	Off	Off	On	Off

CACHE CONFIGURATION		
Size	Bank 0	Bank 1
64KB	(4) 8K x 8	(4) 8K x 8
256KB	(4) 32K x 8	(4) 32K x 8

CACHE JUMPER CONFIGURATION			
Size	W3	W4	W15
64KB	Open	Open	pins 2 & 3 closed
256KB	Closed	Closed	pins 1 & 2 closed