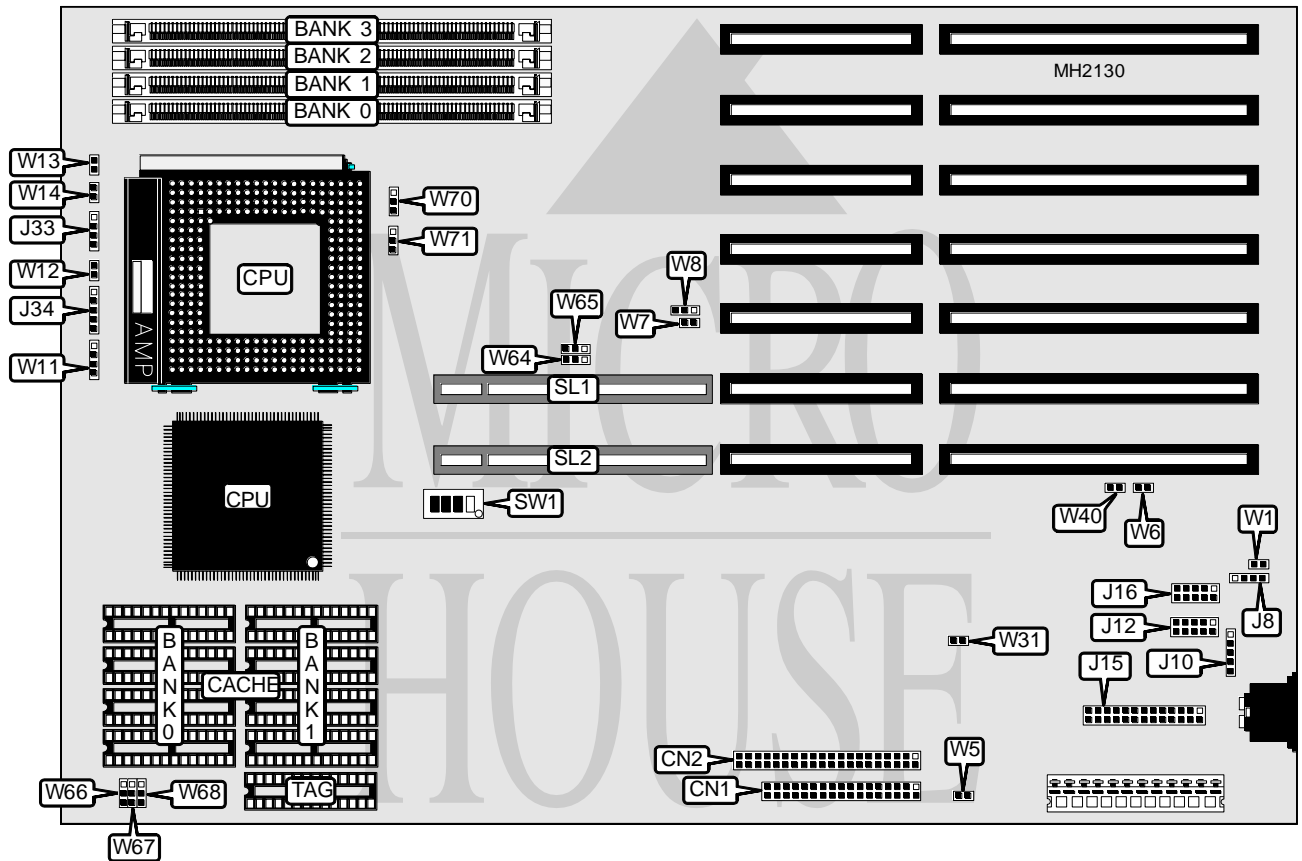


MICRONICS COMPUTERS, INC. ZIF SOCKET SYSTEM BOARD

Processor	80486SX/80486DX/80486DX2/Pentium Overdrive
Processor Speed	25/33/50(internal)66/(internal)MHz
Chip Set	Intel
Max. Onboard DRAM	64MB
Cache	64/128/256KB
BIOS	AMI
Dimensions	330mm x 218mm
I/O Options	32-bit VESA local bus slots (2), floppy drive interface, IDE interface, parallel port, serial ports (2)
NPU Options	None



CONNECTIONS			
Purpose	Location	Purpose	Location
Floppy drive interface	CN1	Speaker	J33
IDE interface	CN2	Power LED & keylock	J34
External battery	J8	IDE interface LED	W11
External keyboard connector	J10	Reset switch	W12
Serial port 1	J12	Turbo LED	W13
Parallel port	J15	Turbo switch	W14
Serial port 2	J16	32-bit VESA Local bus slots	SL1 & SL2

Continued on next page. . .

MICRONICS COMPUTERS, INC.

ZIF SOCKET SYSTEM BOARD

... continued from previous page

USER CONFIGURABLE SETTINGS		
Function	Jumper/Switch	Position
í Factory configured - do not alter	SW1/2	On
í Factory configured - do not alter	SW1/3	Off
í Factory configured - do not alter	SW1/4	Off
í Clock type select Motorola 126818	W1	Open
Clock type select Dallas	W1	Closed
í Parallel port unidirectional (printer)	W5	pins 1 & 2 closed
Parallel port bidirectional	W5	pins 2 & 3 closed
í Monitor type select color	W6	Closed
Monitor type select monochrome	W6	Open
í Factory configured - do not alter	W7	Open
í CMOS memory normal operation	W8	pins 2 & 3 closed
CMOS memory clear	W8	pins 1 & 2 closed
í Factory configured - do not alter	W20	Closed
í Factory configured - do not alter	W28	Closed
í Battery normal operation (Dallas)	W31	Open
Battery memory clear (Dallas)	W31	Closed
í Local bus parity enabled	W40	Closed
Local bus disabled	W40	Open
í Factory configured - do not alter	W61	Open
í Factory configured - do not alter	W62	Open
í CPU type select 80486DX/DX2/Pentium Overdrive	W70	pins 2 & 3 closed
CPU type select 80486SX	W70	pins 1 & 2 closed
í CPU type select PQFP installed with PGA Pentium Overdrive	W71	pins 1 & 2 closed
CPU type select PQFP installed with PGA 80486DX/DX2	W71	pins 2 & 3 closed

Note: The location of jumpers W20, W28, W61 & W62 are unidentified.

DRAM CONFIGURATION				
Size	Bank 0	Bank 1	Bank 2	Bank 3
1MB	(1) 256K x 36	NONE	NONE	NONE
2MB	(1) 256K x 36	(1) 256K x 36	NONE	NONE
3MB	(1) 256K x 36	(1) 256K x 36	(1) 256K x 36	NONE
4MB	(1) 256K x 36	(1) 256K x 36	(1) 256K x 36	(1) 256K x 36
4MB	(1) 1M x 36	NONE	NONE	NONE
5MB	(1) 256K x 36	(1) 1M x 36	NONE	NONE
6MB	(1) 256K x 36	(1) 256K x 36	(1) 1M x 36	NONE
7MB	(1) 256K x 36	(1) 256K x 36	(1) 256K x 36	(1) 1M x 36
8MB	(1) 1M x 36	(1) 1M x 36	NONE	NONE
9MB	(1) 256K x 36	(1) 1M x 36	(1) 1M x 36	NONE
10MB	(1) 256K x 36	(1) 256K x 36	(1) 1M x 36	(1) 1M x 36
12MB	(1) 1M x 36	(1) 1M x 36	(1) 1M x 36	NONE
13MB	(1) 256K x 36	(1) 1M x 36	(1) 1M x 36	(1) 1M x 36
16MB	(1) 1M x 36	(1) 1M x 36	(1) 1M x 36	(1) 1M x 36
16MB	(1) 4M x 36	NONE	NONE	NONE
20MB	(1) 1M x 36	(1) 4M x 36	NONE	NONE

Continued on next page. . .

MICRONICS COMPUTERS, INC.

ZIF SOCKET SYSTEM BOARD

... continued from previous page

DRAM CONFIGURATION (CON'T)				
Size	Bank 0	Bank 1	Bank 2	Bank 3
24MB	(1) 1M x 36	(1) 1M x 36	(1) 4M x 36	NONE
28MB	(1) 1M x 36	(1) 1M x 36	(1) 1M x 36	(1) 4M x 36
32MB	(1) 4M x 36	(1) 4M x 36	NONE	NONE
36MB	(1) 1M x 36	(1) 4M x 36	(1) 4M x 36	NONE
40MB	(1) 1M x 36	(1) 1M x 36	(1) 4M x 36	(1) 4M x 36
48MB	(1) 4M x 36	(1) 4M x 36	(1) 4M x 36	NONE
52MB	(1) 1M x 36	(1) 4M x 36	(1) 4M x 36	(1) 4M x 36
64MB	(1) 4M x 36	(1) 4M x 36	(1) 4M x 36	(1) 4M x 36

CACHE CONFIGURATION			
Size	Bank 0	Bank 1	TAG
64KB	(4) 8K x 8	(4) 8K x 8	(1) 8K x 8
128KB	(4) 32K x 8	NONE	(1) 8K x 8
256KB	(4) 32K x 8	(4) 32K x 8	(1) 32K x 8

CACHE JUMPER CONFIGURATION					
Size	W64	W65	W66	W67	W68
64KB	1 & 2	1 & 2	2 & 3	2 & 3	1 & 2
128KB	2 & 3	1 & 2	1 & 2	1 & 2	2 & 3
256KB	2 & 3	2 & 3	2 & 3	2 & 3	2 & 3

Note: Pins designated should be in the closed position.

CPU SPEED CONFIGURATION	
Speed	SW1/1
25MHz	On
33MHz	Off
50MHz	On
66MHz	Off