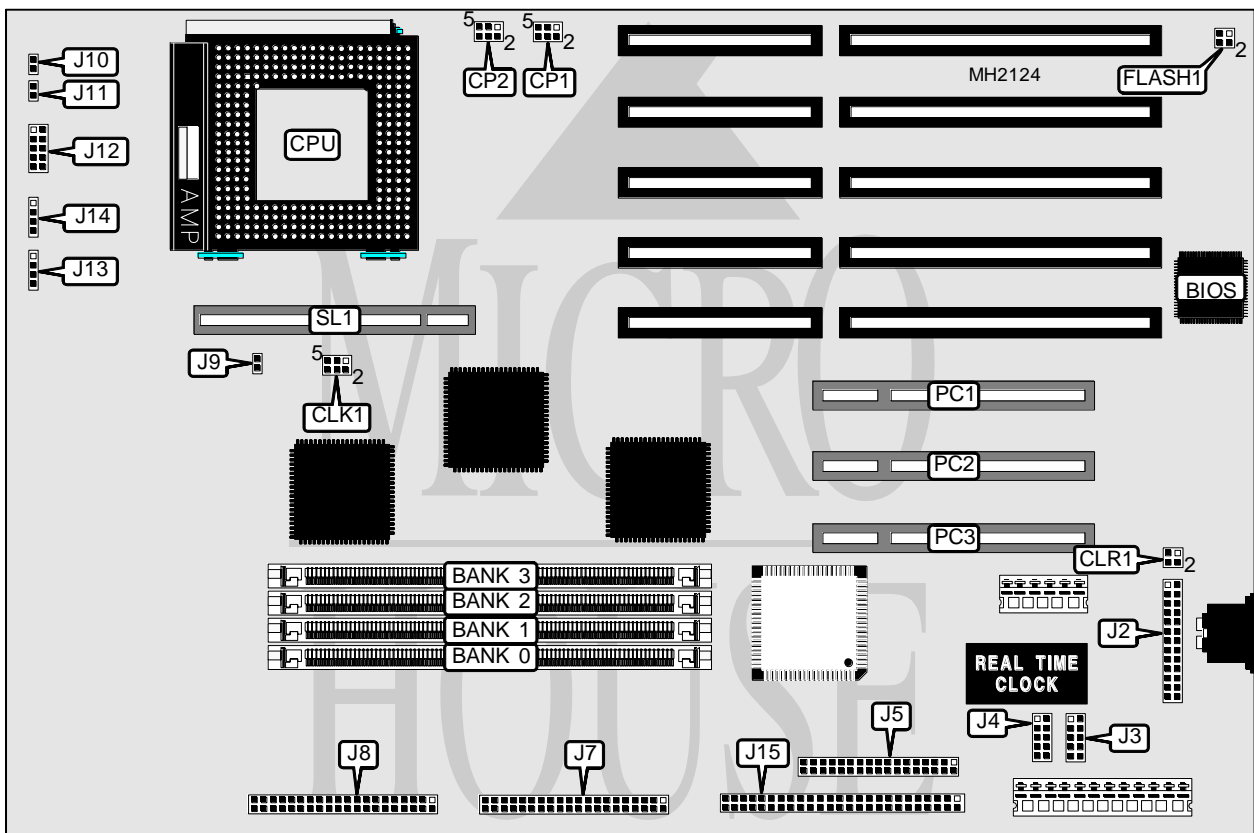


# ZEOS INTERNATIONAL, LTD. PANTERA 486

<b>Processor</b>	80486SX/80486DX/80486DX2/80486DX4/Pentium Overdrive
<b>Processor Speed</b>	25/33/50(internal)/66(internal)/75(internal)/100(internal)MHz
<b>Chip Set</b>	SMC
<b>Max. Onboard DRAM</b>	128MB
<b>Cache</b>	128/256KB (on external cache card)
<b>BIOS</b>	AMI
<b>Dimensions</b>	330mm x 218mm
<b>I/O Options</b>	32-bit PCI bus slots (3), floppy drive interface, IDE interface (2), parallel port, serial ports (2), SCSI interface, external cache card
<b>NPU Options</b>	None



CONNECTIONS			
Purpose	Location	Purpose	Location
Parallel port	J2	Low power LED	J11
Serial port 2	J3	Power LED & keylock	J12
Serial port 1	J4	IDE interface LED	J13
Floppy drive interface	J5	Speaker	J14
IDE interface (secondary)	J7	SCSI connector	J15
IDE interface (primary)	J8	32-bit PCI bus slots	PC1 - PC3
Chassis fan power	J9	External cache card	SL1
Reset switch	J10		

Continued on next page...

**ZEOS INTERNATIONAL, LTD.  
PANTERA 486**

... continued from previous page

USER CONFIGURABLE SETTINGS		
Function	Jumper	Position
í CMOS memory normal operation	CLR1	pins 1 & 2 closed
CMOS memory clear	CLR1	pins 3 & 4 closed
í Flash BIOS write protect enabled	FLASH1	pins 1 & 2 closed
Flash BIOS write protect disabled	FLASH1	pins 3 & 4 closed

DRAM CONFIGURATION				
Size	Bank 0	Bank 1	Bank 2	Bank 3
2MB	(1) 256K x 36	(1) 256K x 36	NONE	NONE
4MB	(1) 256K x 36	(1) 256K x 36	(1) 256K x 36	(1) 256K x 36
4MB	(1) 512K x 36	(1) 512K x 36	NONE	NONE
8MB	(1) 512K x 36	(1) 512K x 36	(1) 512K x 36	(1) 512K x 36
8MB	(1) 1M x 36	(1) 1M x 36	NONE	NONE
10MB	(1) 1M x 36	(1) 1M x 36	(1) 256K x 36	(1) 256K x 36
12MB	(1) 1M x 36	(1) 1M x 36	(1) 512K x 36	(1) 512K x 36
16MB	(1) 1M x 36	(1) 1M x 36	(1) 1M x 36	(1) 1M x 36
16MB	(1) 2M x 36	(1) 2M x 36	NONE	NONE
32MB	(1) 2M x 36	(1) 2M x 36	(1) 2M x 36	(1) 2M x 36
32MB	(1) 4M x 36	(1) 4M x 36	NONE	NONE
64MB	(1) 8M x 36	(1) 8M x 36	NONE	NONE
64MB	(1) 4M x 36	(1) 4M x 36	(1) 4M x 36	(1) 4M x 36
96MB	(1) 4M x 36	(1) 4M x 36	(1) 8M x 36	(1) 8M x 36
128MB	(1) 8M x 36	(1) 8M x 36	(1) 8M x 36	(1) 8M x 36

CPU TYPE CONFIGURATION	
Type	CP1
80486SX	pins 3 & 5, 4 & 6 closed
80486DX/DX2/DX4/Overdrive	pins 1 & 3, 2 & 4 closed

CPU SPEED CONFIGURATION	
Speed	CLK1
25MHz	pins 1 & 3, 4 & 6 closed
33MHz	pins 2 & 4, 3 & 5 closed
50iMHz	pins 1 & 3, 4 & 6 closed
66iMHz	pins 2 & 4, 3 & 5 closed
75iMHz	pins 1 & 3, 4 & 6 closed
100iMHz	pins 2 & 4, 3 & 5 closed

CPU VOLTAGE CONFIGURATION	
Voltage	CP2
3.3 volt	pins 1 & 3, 2 & 4 closed
5 volt	pins 3 & 5, 4 & 6 closed