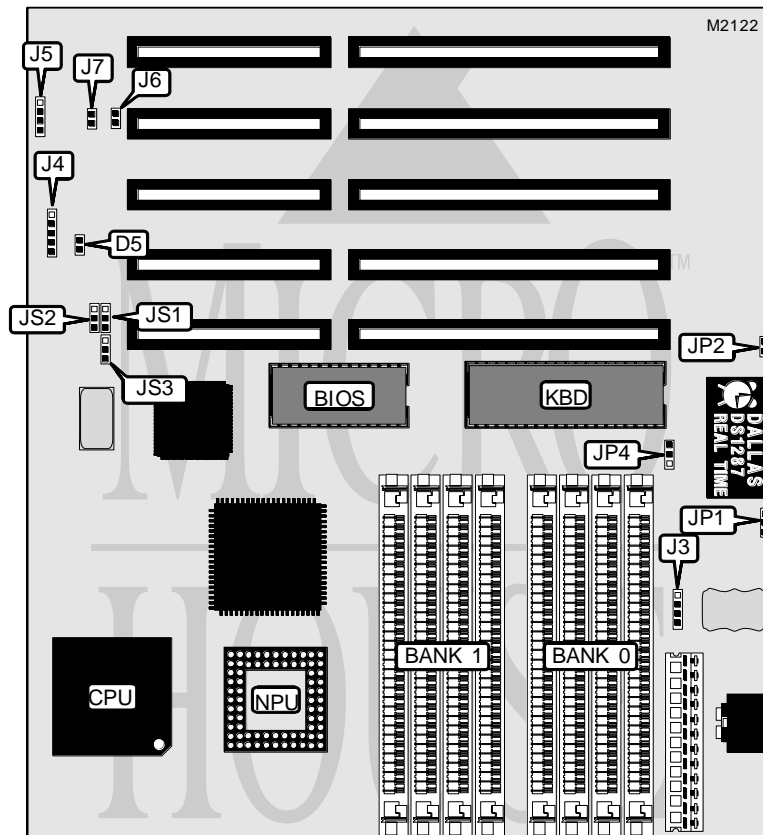


INFORMTECH INTERNATIONAL, INC.

IT - A M 3 3 / 4 0 - D L C

Processor	80386DX/AMD386DX/CX486DLC
Processor Speed	16/25/33/40MHz
Chip Set	Maconics
Max. Onboard DRAM	32MB
Cache	None
BIOS	AMI
Dimensions	220mm x 170mm
I/O Options	None
NPU Options	None



CONNECTIONS			
Purpose	Location	Purpose	Location
Turbo LED	D5	Speaker	J5
External battery	J3	Turbo switch	J6
Power LED & keylock	J4	Reset switch	J7

Continued on next page . . .

INFORMTECH INTERNATIONAL, INC.
IT - A M 3 3 / 4 0 - D L C

... continued from previous page.

USER CONFIGURABLE SETTINGS		
Function	Jumper	Position
í MC146818 enabled	JP1	pins 2 & 3 closed
DS1287 enabled	JP1	pins 1 & 2 closed
í Monitor type select monochrome	JP2	Open
Monitor type select color	JP2	Closed
í CPU brand selection INTEL/AMD 80386DX CPU	JP3	pins 1 & 2 closed
CPU brand selection CYRIX 486DLC CPU	JP3	pins 2 & 3 closed
í CMOS memory normal operation	JP4	pins 1 & 2 closed
CMOS memory data clear	JP4	pins 2 & 3 closed

Note: The exact location of JP3 is unidentified by the manufacturer.

DRAM CONFIGURATION		
Size	Bank 0	Bank 1
1MB	(4) 256K x 9	NONE
2MB	(4) 256K x 9	(4) 256K x 9
4MB	(4) 1M x 9	NONE
5MB	(4) 1M x 9	(4) 256K x 9
8MB	(4) 1M x 9	(4) 1M x 9
16MB	(4) 4M x 9	NONE
17MB	(4) 4M x 9	(4) 256K x 9
20MB	(4) 4M x 9	(4) 1M x 9
32MB	(4) 4M x 9	(4) 4M x 9

CLOCK GENERATOR FREQUENCY CONFIGURATION				
Clock Speed	CPU Speed	JS1	JS2	JS3
80MHz	40MHz	pins 1 & 2 closed	pins 2 & 3 closed	pins 2 & 3 closed
66MHz	33MHz	pins 2 & 3 closed	pins 1 & 2 closed	pins 2 & 3 closed
50MHz	25MHz	pins 1 & 2 closed	pins 1 & 2 closed	pins 2 & 3 closed
33MHz	16MHz	pins 1 & 2 closed	pins 2 & 3 closed	pins 1 & 2 closed