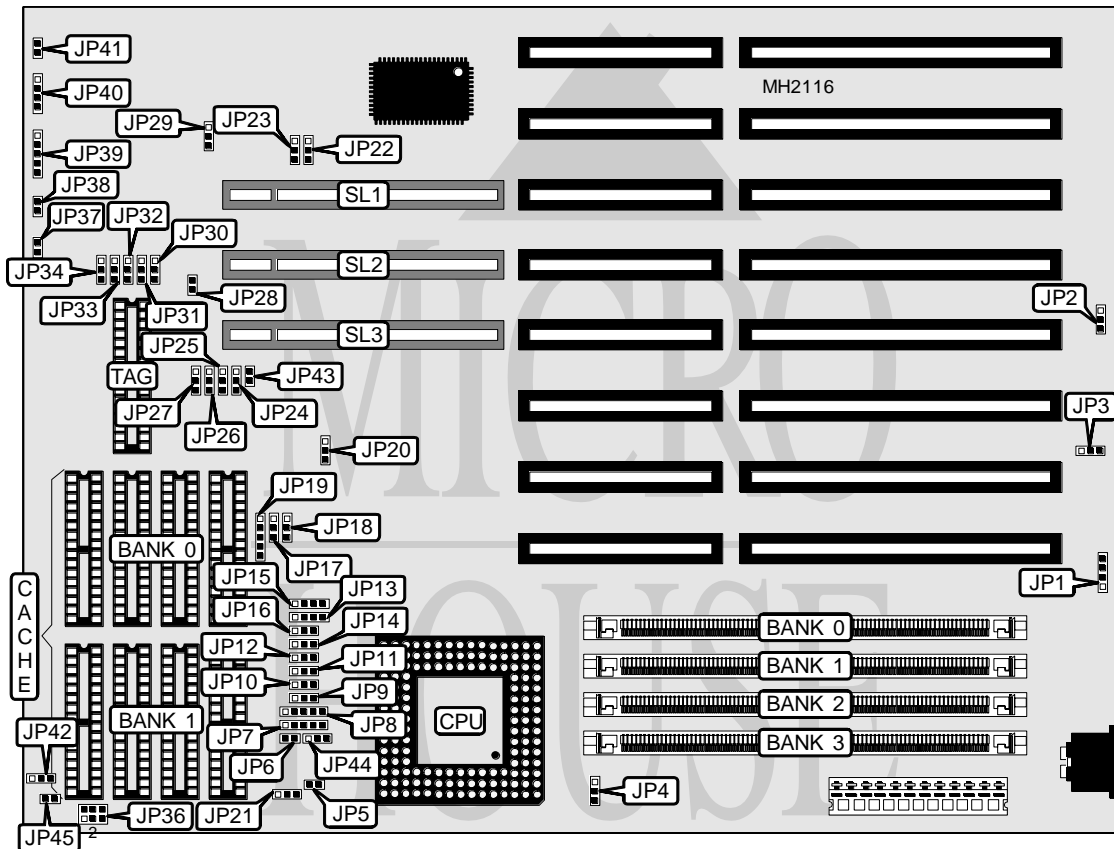


EFA CORPORATION

4 D M S - H L 3 G

Processor	CX486M6/CX486S/80486SX/SL80486SX/CX486M7/CX486DX/AM486DX/ 80486DX/AM486DXL/SL80486DX/CX486DX2/AM486DX2/80486DX2/ AM486DX2L/SL80486DX2/CX486DX2-V/80486DX4/Pentium Overdrive/SL Pentium Overdrive
Processor Speed	20/25/33/40/50(internal)/50/66(internal)/75(internal)/80(internal)/ 100(internal)MHz
Chip Set	SIS
Max. Onboard DRAM	128MB
Cache	64/128/256/512/1024KB
BIOS	Award
Dimensions	291mm x 223mm
I/O Options	32-bit VESA local bus slots (3)
NPU Options	None



CONNECTIONS			
Purpose	Location	Purpose	Location
External battery	JP1	Speaker	JP40
Turbo switch	JP37	Turbo LED	JP41
Reset switch	JP38	32-bit VESA local bus slots	SL1 - SL3
Power LED & keylock	JP39		

Continued on next page. . .

EFA CORPORATION

4 D M S - H L 3 G

... continued from previous page

USER CONFIGURABLE SETTINGS		
Function	Jumper	Position
1 Monitor type select color	JP2	pins 2 & 3 closed
Monitor type select monochrome/VGA	JP2	Open
1 CMOS memory normal operation	JP3	pins 1 & 2 closed
CMOS memory clear	JP3	pins 2 & 3 closed
1 Factory configured - do not alter	JP8	pins 1 & 2 closed
1 Factory configured - do not alter	JP20	pins 2 & 3 closed
1 Factory configured - do not alter	JP28	pins 1 & 2 closed
1 BIOS voltage select 5V	JP29	pins 1 & 2 closed
BIOS voltage select 12V	JP29	pins 2 & 3 closed

DRAM CONFIGURATION				
Size	Bank 0	Bank 1	Bank 2	Bank 3
1MB	(1) 256K x 36	NONE	NONE	NONE
2MB	(1) 256K x 36	(1) 256K x 36	NONE	NONE
2MB	(1) 512K x 36	NONE	NONE	NONE
4MB	(1) 256K x 36	(1) 256K x 36	(1) 512K x 36	NONE
4MB	(1) 512K x 36	(1) 512K x 36	NONE	NONE
4MB	(1) 1M x 36	NONE	NONE	NONE
5MB	(1) 256K x 36	(1) 1M x 36	NONE	NONE
6MB	(1) 256K x 36	(1) 256K x 36	(1) 1M x 36	NONE
6MB	(1) 512K x 36	(1) 1M x 36	NONE	NONE
8MB	(1) 256K x 36	(1) 256K x 36	(1) 512K x 36	(1) 1M x 36
8MB	(1) 512K x 36	(1) 512K x 36	(1) 1M x 36	NONE
8MB	(1) 1M x 36	(1) 1M x 36	NONE	NONE
8MB	(1) 2M x 36	NONE	NONE	NONE
10MB	(1) 256K x 36	(1) 256K x 36	(1) 1M x 36	(1) 1M x 36
12MB	(1) 512K x 36	(1) 512K x 36	(1) 1M x 36	(1) 1M x 36
12MB	(1) 1M x 36	(1) 1M x 36	(1) 1M x 36	NONE
12MB	(1) 1M x 36	(1) 2M x 36	NONE	NONE
16MB	(1) 1M x 36	(1) 1M x 36	(1) 1M x 36	(1) 1M x 36
16MB	(1) 1M x 36	(1) 1M x 36	(1) 2M x 36	NONE
16MB	(1) 2M x 36	(1) 2M x 36	NONE	NONE
16MB	(1) 4M x 36	NONE	NONE	NONE
17MB	(1) 256K x 36	(1) 4M x 36	NONE	NONE
18MB	(1) 256K x 36	(1) 256K x 36	(1) 4M x 36	NONE
18MB	(1) 512K x 36	(1) 4M x 36	NONE	NONE
20MB	(1) 512K x 36	(1) 512K x 36	(1) 4M x 36	NONE
20MB	(1) 1M x 36	(1) 4M x 36	NONE	NONE
24MB	(1) 512K x 36	(1) 512K x 36	(1) 1M x 36	(1) 4M x 36
24MB	(1) 1M x 36	(1) 1M x 36	(1) 4M x 36	NONE
24MB	(1) 2M x 36	(1) 2M x 36	(1) 2M x 36	NONE
32MB	(1) 2M x 36	(1) 2M x 36	(1) 2M x 36	(1) 2M x 36
32MB	(1) 4M x 36	(1) 4M x 36	NONE	NONE
32MB	(1) 8M x 36	NONE	NONE	NONE

Continued on next page. . .

EFA CORPORATION

4 D M S - H L 3 G

... continued from previous page

DRAM CONFIGURATION (CON'T)				
36MB	(1) 512K x 36	(1) 512K x 36	(1) 4M x 36	(1) 4M x 36
36MB	(1) 1M x 36	(1) 4M x 36	(1) 4M x 36	NONE
36MB	(1) 1M x 36	(1) 8M x 36	NONE	NONE
40MB	(1) 1M x 36	(1) 1M x 36	(1) 4M x 36	(1) 4M x 36
40MB	(1) 2M x 36	(1) 8M x 36	NONE	NONE
48MB	(1) 4M x 36	(1) 4M x 36	(1) 4M x 36	NONE
48MB	(1) 4M x 36	(1) 8M x 36	NONE	NONE
64MB	(1) 4M x 36	(1) 4M x 36	(1) 4M x 36	(1) 4M x 36
64MB	(1) 4M x 36	(1) 4M x 36	(1) 8M x 36	NONE
64MB	(1) 8M x 36	(1) 8M x 36	NONE	NONE
64MB	(1) 16M x 36	NONE	NONE	NONE
65MB	(1) 256K x 36	(1) 16M x 36	NONE	NONE
68MB	(1) 1M x 36	(1) 8M x 36	(1) 8M x 36	NONE
68MB	(1) 1M x 36	(1) 16M x 36	NONE	NONE
72MB	(1) 1M x 36	(1) 1M x 36	(1) 8M x 36	(1) 8M x 36
72MB	(1) 1M x 36	(1) 1M x 36	(1) 16M x 36	NONE
80MB	(1) 4M x 36	(1) 8M x 36	(1) 8M x 36	NONE
80MB	(1) 4M x 36	(1) 16M x 36	NONE	NONE
96MB	(1) 4M x 36	(1) 4M x 36	(1) 8M x 36	(1) 8M x 36
96MB	(1) 8M x 36	(1) 8M x 36	(1) 8M x 36	NONE
96MB	(1) 4M x 36	(1) 4M x 36	(1) 16M x 36	NONE
128MB	(1) 8M x 36	(1) 8M x 36	(1) 8M x 36	(1) 8M x 36
128MB	(1) 16M x 36	(1) 16M x 36	NONE	NONE

CACHE CONFIGURATION			
Size	Bank 0	Bank 1	TAG
64KB	(4) 8K x 8	(4) 8K x 8	(1) 8K x 8
128KB	(4) 32K x 8	NONE	(1) 8K x 8
256KB	(4) 32K x 8	(4) 32K x 8	(1) 32K x 8
512KB	(4) 128K x 8	NONE	(1) 32K x 8
1MB	(4) 128K x 8	(4) 128K x 8	(1) 128K x 8

Note: The 32K x 8 chips have 28 pins, and the sockets have 32. When installing these chips, leave the topmost four pins empty.

Continued on next page. . .

EFA CORPORATION

4 D M S - H L 3 G

... continued from previous page

CPU TYPE CONFIGURATION							
Type	JP4	JP5	JP6	JP7	JP9	JP10	JP11
CX486M6	1 & 2	Open	Open	2 & 3	1 & 2	1 & 2	2 & 3
CX486S	1 & 2	Open	Open	2 & 3	1 & 2	1 & 2	2 & 3
80486SX	1 & 2	Open	Open	Open	1 & 2	Open	Open
SL80486SX	1 & 2	1 & 2	Open	4 & 5	1 & 2	2 & 3	1 & 2
CX486M7	1 & 2	Open	1 & 2	2 & 3	1 & 2	1 & 2	2 & 3
CX486DX	1 & 2	Open	1 & 2	2 & 3	1 & 2	1 & 2	2 & 3
AM486DX	1 & 2	Open	1 & 2	Open	1 & 2	Open	Open
80486DX	1 & 2	Open	Open	Open	1 & 2	Open	Open
AM486DXL	1 & 2	Open	1 & 2	Open	1 & 2	Open	Open
SL80486DX	1 & 2	1 & 2	1 & 2	4 & 5	1 & 2	2 & 3	1 & 2
CX486DX2	1 & 2	Open	1 & 2	2 & 3	1 & 2	1 & 2	2 & 3
AM486DX2	1 & 2	Open	1 & 2	Open	1 & 2	Open	Open
80486DX2	1 & 2	Open	Open	Open	1 & 2	Open	Open
AM486DX2L	1 & 2	Open	1 & 2	Open	1 & 2	Open	Open
SL80486DX2	1 & 2	1 & 2	1 & 2	4 & 5	1 & 2	2 & 3	1 & 2
CX486DX2-V	2 & 3	Open	1 & 2	2 & 3	1 & 2	1 & 2	2 & 3
80486DX4	2 & 3	1 & 2	1 & 2	4 & 5	2 & 3	2 & 3	1 & 2
P24T	1 & 2	Open	1 & 2	Open	1 & 2	Open	Open
P24D	1 & 2	1 & 2	1 & 2	4 & 5	1 & 2	2 & 3	1 & 2

Note: Pins designated should be in the closed position.

CPU TYPE CONFIGURATION (CON'T)							
Type	JP12	JP13	JP14	JP15	JP16	JP21	JP22
CX486M6	2 & 3	2 & 3	2 & 3	Open	2 & 3	Open	1 & 2
CX486S	2 & 3	2 & 3	2 & 3	Open	2 & 3	Open	1 & 2
80486SX	2 & 3	Open	2 & 3	Open	Open	Open	2 & 3
SL80486SX	2 & 3	Open	2 & 3	Open	Open	Open	2 & 3
CX486M7	2 & 3	2 & 3	1 & 2	3 & 4	2 & 3	2 & 3	1 & 2
CX486DX	2 & 3	2 & 3	1 & 2	3 & 4	2 & 3	2 & 3	1 & 2
AM486DX	2 & 3	3 & 4	1 & 2	1 & 2	Open	Open	2 & 3
80486DX	2 & 3	Open	1 & 2	3 & 4	Open	Open	2 & 3
AM486DXL	2 & 3	3 & 4	1 & 2	1 & 2	Open	Open	2 & 3
SL80486DX	2 & 3	Open	1 & 2	3 & 4	Open	Open	2 & 3
CX486DX2	2 & 3	2 & 3	1 & 2	3 & 4	2 & 3	1 & 2	1 & 2
AM486DX2	2 & 3	3 & 4	1 & 2	1 & 2	Open	Open	2 & 3
80486DX2	2 & 3	Open	1 & 2	3 & 4	Open	Open	2 & 3
AM486DX2L	2 & 3	3 & 4	1 & 2	1 & 2	Open	Open	2 & 3
SL80486DX2	2 & 3	Open	1 & 2	3 & 4	Open	Open	2 & 3
CX486DX2-V	2 & 3	2 & 3	1 & 2	3 & 4	2 & 3	1 & 2	1 & 2
80486DX4	2 & 3	Open	1 & 2	3 & 4	Open	Open	2 & 3
P24T	1 & 2	Open	1 & 2	2 & 3	Open	Open	2 & 3
P24D	1 & 2	Open	1 & 2	2 & 3	Open	Open	2 & 3

Note: Pins designated should be in the closed position.

Continued on next page...

EFA CORPORATION

4 D M S - H L 3 G

... continued from previous page

CPU TYPE CONFIGURATION (CON'T)						
Type	JP23	JP36	JP42	JP43	JP44	JP45
CX486M6	2 & 3	1 & 2, 4 & 5	Open	1 & 2	1 & 2	Open
CX486S	2 & 3	1 & 2, 4 & 5	Open	1 & 2	1 & 2	Open
80486SX	1 & 2	1 & 2, 4 & 5	Open	1 & 2	1 & 2	Open
SL80486SX	1 & 2	1 & 2, 4 & 5	Open	1 & 2	1 & 2	Open
CX486M7	2 & 3	1 & 2, 4 & 5	Open	1 & 2	1 & 2	Open
CX486DX	2 & 3	1 & 2, 4 & 5	Open	1 & 2	1 & 2	Open
AM486DX	1 & 2	1 & 2, 4 & 5	Open	1 & 2	1 & 2	Open
80486DX	1 & 2	1 & 2, 4 & 5	Open	1 & 2	1 & 2	Open
AM486DXL	1 & 2	1 & 2, 4 & 5	Open	1 & 2	2 & 3	Open
SL80486DX	1 & 2	1 & 2, 4 & 5	Open	1 & 2	1 & 2	Open
CX486DX2	2 & 3	1 & 2, 4 & 5	Open	1 & 2	1 & 2	Open
AM486DX2	1 & 2	1 & 2, 4 & 5	Open	1 & 2	1 & 2	Open
80486DX2	1 & 2	1 & 2, 4 & 5	Open	1 & 2	1 & 2	Open
AM486DX2L	1 & 2	1 & 2, 4 & 5	Open	1 & 2	2 & 3	Open
SL80486DX2	1 & 2	1 & 2, 4 & 5	Open	1 & 2	1 & 2	Open
CX486DX2-V	2 & 3	2 & 3, 5 & 6	Open	1 & 2	1 & 2	1 & 2
80486DX4	1 & 2	2 & 3, 5 & 6	1 & 2	Open	1 & 2	Open
P24T	1 & 2	1 & 2, 4 & 5	Open	1 & 2	1 & 2	Open
P24D	1 & 2	1 & 2, 4 & 5	Open	1 & 2	1 & 2	Open

Note: Pins designated should be in the closed position.

CPU SPEED CONFIGURATION					
Speed	JP24	JP25	JP26	JP30	JP31
20MHz	1 & 2	2 & 3	2 & 3	1 & 2	1 & 2
25MHz	2 & 3	2 & 3	1 & 2	1 & 2	1 & 2
33MHz	2 & 3	1 & 2	2 & 3	1 & 2	1 & 2
40MHz	1 & 2	2 & 3	1 & 2	2 & 3	2 & 3
50iMHz	2 & 3	2 & 3	1 & 2	1 & 2	1 & 2
50MHz	1 & 2	1 & 2	2 & 3	2 & 3	2 & 3
66iMHz	2 & 3	1 & 2	2 & 3	1 & 2	1 & 2
75iMHz	2 & 3	2 & 3	1 & 2	1 & 2	1 & 2
80iMHz	1 & 2	2 & 3	1 & 2	2 & 3	2 & 3
100iMHz	2 & 3	1 & 2	2 & 3	1 & 2	1 & 2

Note: Pins designated should be in the closed position.

CACHE JUMPER CONFIGURATION							
Size	JP17	JP18	JP19	JP27	JP32	JP33	JP34
64KB	1 & 2	2 & 3	Open	2 & 3	1 & 2	1 & 2	1 & 2
128KB	2 & 3	1 & 2	1 & 2, 3 & 4	2 & 3	1 & 2	1 & 2	2 & 3
256KB	1 & 2	1 & 2	2 & 3, 4 & 5	2 & 3	1 & 2	2 & 3	2 & 3
512KB	2 & 3	1 & 2	1 & 2, 3 & 4	2 & 3	2 & 3	2 & 3	2 & 3
1MB	1 & 2	1 & 2	2 & 3, 4 & 5	1 & 2	2 & 3	2 & 3	2 & 3

Note: Pins designated are in the closed position.