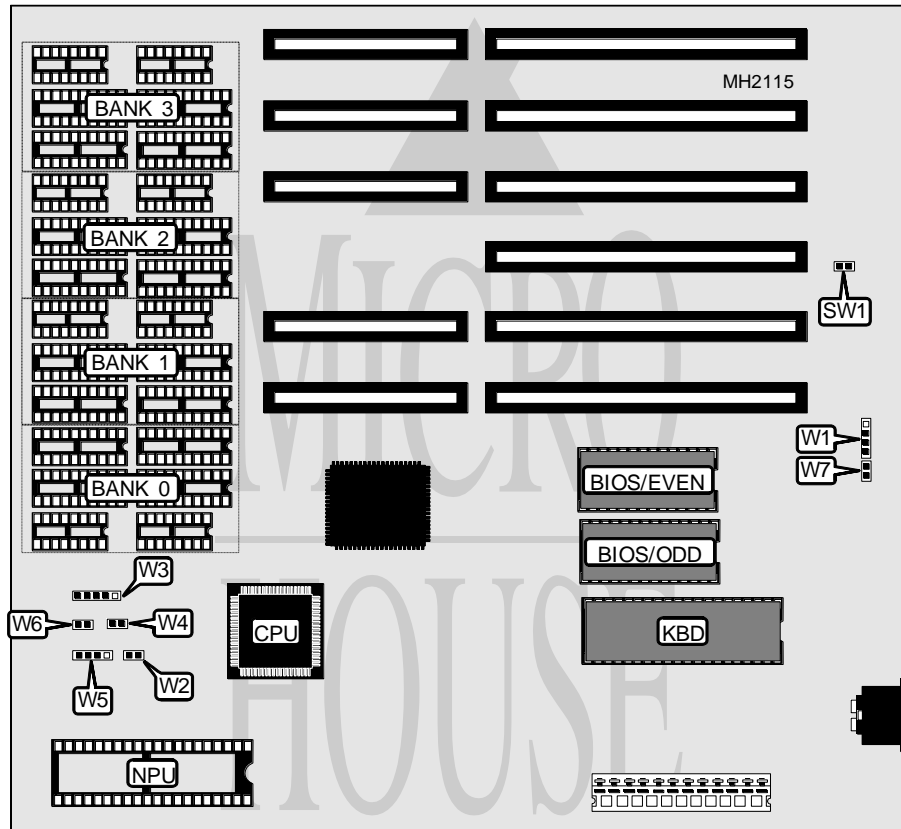


MICRO COMPUTER SYSTEMS CORPORATION SCAT - 286

Processor 80286
Processor Speed 8/12MHz
Chip Set C & T
Max. Onboard DRAM 8MB
Cache None
BIOS AMI
Dimensions 254mm x 218mm
I/O Options None
NPU Options 80287



CONNECTIONS			
Purpose	Location	Purpose	Location
External battery	W1	Turbo switch	W4
Turbo LED	W2	Speaker	W5
Power LED & keylock	W3	Reset switch	W6

Continued on next page...

MICRO COMPUTER SYSTEMS CORPORATION

SCAT - 286

... continued from previous page.

USER CONFIGURABLE SETTINGS		
Function	Jumper	Position
í Monitor type select color	SW1	Closed
Monitor type select monochrome	SW1	Open
í CMOS normal operation	W7	Open
CMOS memory clear	W7	Closed

DRAM CONFIGURATION				
Size	Bank 0	Parity 0 *	Bank 1	Parity 1 *
512KB	(4) 256K x 4	(2) 256K x 1	NONE	NONE
1MB	(4) 256K x 4	(2) 256K x 1	(4) 256K x 4	(2) 256K x 1
1.5MB	(4) 256K x 4	(2) 256K x 1	(4) 256K x 4	(2) 256K x 1
2MB	(4) 256K x 4	(2) 256K x 1	(4) 256K x 4	(2) 256K x 1
2MB	(4) 1M x 4	(2) 256K x 1	NONE	NONE
4MB	(4) 1M x 4	(2) 256K x 1	(4) 1M x 4	(2) 256K x 1
6MB	(4) 1M x 4	(2) 256K x 1	(4) 1M x 4	(2) 256K x 1
8MB	(4) 1M x 4	(2) 256K x 1	(4) 1M x 4	(2) 256K x 1

Note: Parity checking is optional; the 256K x 1 DRAMs are not required if parity-checking is disabled.

DRAM CONFIGURATION (continued)				
Size	Bank 2	Parity 2 *	Bank 3	Parity 3 *
512KB	NONE	NONE	NONE	NONE
1MB	NONE	NONE	NONE	NONE
1.5MB	(4) 256K x 4	(2) 256K x 1	NONE	NONE
2MB	(4) 256K x 4	(2) 256K x 1	(4) 256K x 4	(2) 256K x 1
2MB	NONE	NONE	NONE	NONE
4MB	NONE	NONE	NONE	NONE
6MB	(4) 1M x 4	(2) 256K x 1	NONE	NONE
8MB	(4) 1M x 4	(2) 256K x 1	(4) 1M x 4	(2) 256K x 1

Note: Parity checking is optional; the 256K x 1 DRAMs are not required if parity-checking is disabled.