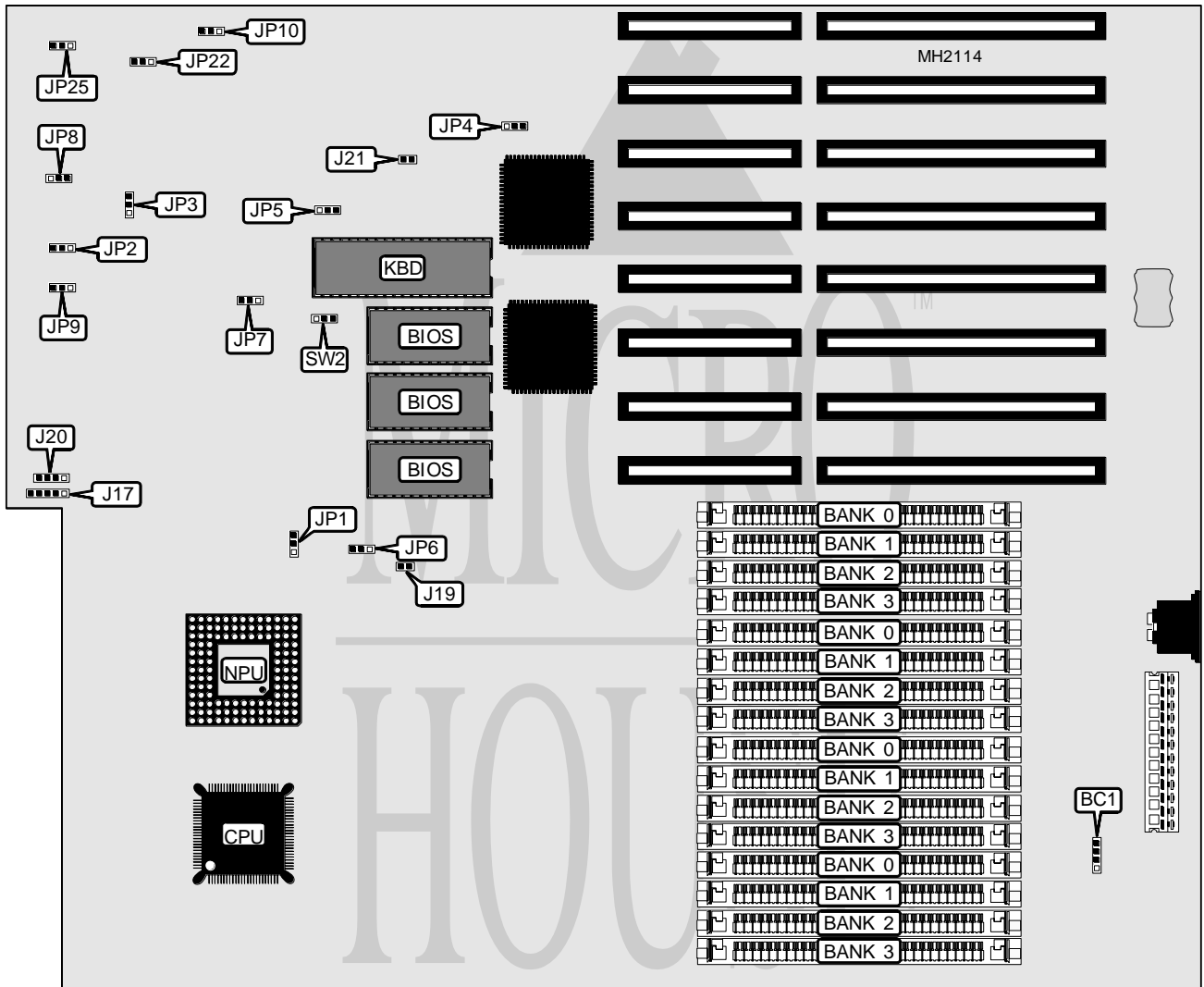


# UNIDENTIFIED 386CM

**Processor** 80386DX  
**Processor Speed** 25MHz  
**Chip Set** Intel  
**Max. Onboard DRAM** 16MB  
**Cache** 32KB  
**BIOS** Unidentified  
**Dimensions** 330mm x 218mm  
**I/O Options** None  
**NPU Options** 80387DX/3167



CONNECTIONS			
Purpose	Location	Purpose	Location
External battery	BC1	Reset switch	J19
Power LED & keylock	J17	Speaker	J20

Continued on next page...

# UNIDENTIFIED 386CM

... continued from previous page.

USER CONFIGURABLE SETTINGS		
Function	Jumper	Position
í NPU synchronous with CPU	JP1	pins 1 & 2 closed
NPU asynchronous with CPU	JP1	pins 2 & 3 closed
í BIOS type select 27512	JP4	pins 1 & 2 closed
BIOS type select 27256	JP4	pins 2 & 3 closed
í Non-cacheable region select 0E0000-0FFFFFF (27512)	JP5	pins 1 & 2 closed
Non-cacheable region select 0F0000-0FFFFFF (27256)	JP5	pins 2 & 3 closed
í NPU disabled	JP6	pins 1 & 2 closed
NPU enabled	JP6	pins 2 & 3 closed
í NPU disabled	JP8	pins 1 & 2 closed
NPU enabled	JP8	pins 2 & 3 closed
í 32-bit memory access wait state select 4 wait states	JP10	pins 1 & 2 closed
32-bit memory access wait state select 3 wait states	JP10	pins 2 & 3 closed
í Turbo speed enabled	J21	Open
Turbo speed disabled	J21	Closed
í 32-bit memory RAS# & CAS# T state select 1 T state	JP25	pins 1 & 2 closed
32-bit memory RAS# & CAS# T state select 0.5 T state	JP25	pins 2 & 3 closed
í Monitor type select color	SW2	pins 1 & 2 closed
Monitor type select monochrome	SW2	pins 2 & 3 closed

DRAM CONFIGURATION					
Size	Extended	Bank 0	Bank 1	Bank 2	Bank 3
1MB	0KB	(4) 256K x 9	NONE	NONE	NONE
1MB	384KB	(4) 256K x 9	NONE	NONE	NONE
2MB	1408KB	(4) 256K x 9	(4) 256K x 9	NONE	NONE
3MB	2432KB	(4) 256K x 9	(4) 256K x 9	(4) 256K x 9	NONE
4MB	3456KB	(4) 256K x 9	(4) 256K x 9	(4) 256K x 9	(4) 256K x 9
4MB	3456KB	(4) 1M x 9	NONE	NONE	NONE
5MB	4480KB	(4) 1M x 9	(4) 256K x 9	NONE	NONE
6MB	5504KB	(4) 1M x 9	(4) 256K x 9	(4) 256K x 9	NONE
7MB	6528KB	(4) 1M x 9	(4) 256K x 9	(4) 256K x 9	(4) 256K x 9
8MB	7552KB	(4) 1M x 9	(4) 1M x 9	NONE	NONE
9MB	8576KB	(4) 1M x 9	(4) 1M x 9	(4) 256K x 9	NONE
10MB	9600KB	(4) 1M x 9	(4) 1M x 9	(4) 256K x 9	(4) 256K x 9
12MB	10624KB	(4) 1M x 9	(4) 1M x 9	(4) 1M x 9	NONE
12MB	11648KB	(4) 1M x 9	(4) 1M x 9	(4) 1M x 9	NONE
13MB	12672KB	(4) 1M x 9	(4) 1M x 9	(4) 1M x 9	(4) 256K x 9
16MB	13696KB	(4) 1M x 9	(4) 1M x 9	(4) 1M x 9	(4) 1M x 9
16MB	14720KB	(4) 1M x 9	(4) 1M x 9	(4) 1M x 9	(4) 1M x 9

Continued on next page...

# UNIDENTIFIED

## 386CM

... continued from previous page.

DRAM JUMPER CONFIGURATION				
Size	SW4/1	SW4/2	SW4/3	SW4/4
1MB	On	On	On	On
1MB	Off	On	On	On
2MB	On	Off	On	On
3MB	Off	Off	On	On
4MB	On	On	Off	On
4MB	On	On	Off	On
5MB	Off	On	Off	On
6MB	On	Off	Off	On
7MB	Off	Off	Off	On
8MB	On	On	On	Off
9MB	Off	On	On	Off
10MB	On	Off	On	Off
12MB	Off	Off	On	Off
12MB	On	On	Off	Off
13MB	Off	On	Off	Off
16MB	On	Off	Off	Off
16MB	Off	Off	Off	Off

Note: The location of SW4 is unidentified.

CACHE CONFIGURATION	
Size	Bank 0
0KB	NONE
32KB	(4) 8K x 8

Note: The location of the cache bank is unidentified

CACHE JUMPER CONFIGURATION			
Size	JP2	JP3	JP22
0KB	pins 2 & 3 closed	pins 2 & 3 closed	pins 2 & 3 closed
32KB	pins 1 & 2 closed	pins 1 & 2 closed	pins 1 & 2 closed

DMA MODE CONFIGURATION		
Mode	JP7	JP9
Normal (processor holds on all DMA & refresh cycles)	pins 1 & 2 closed	pins 1 & 2 closed
Bypass (processor holds on cache DMA invalidation cycles only)	pins 2 & 3 closed	pins 2 & 3 closed