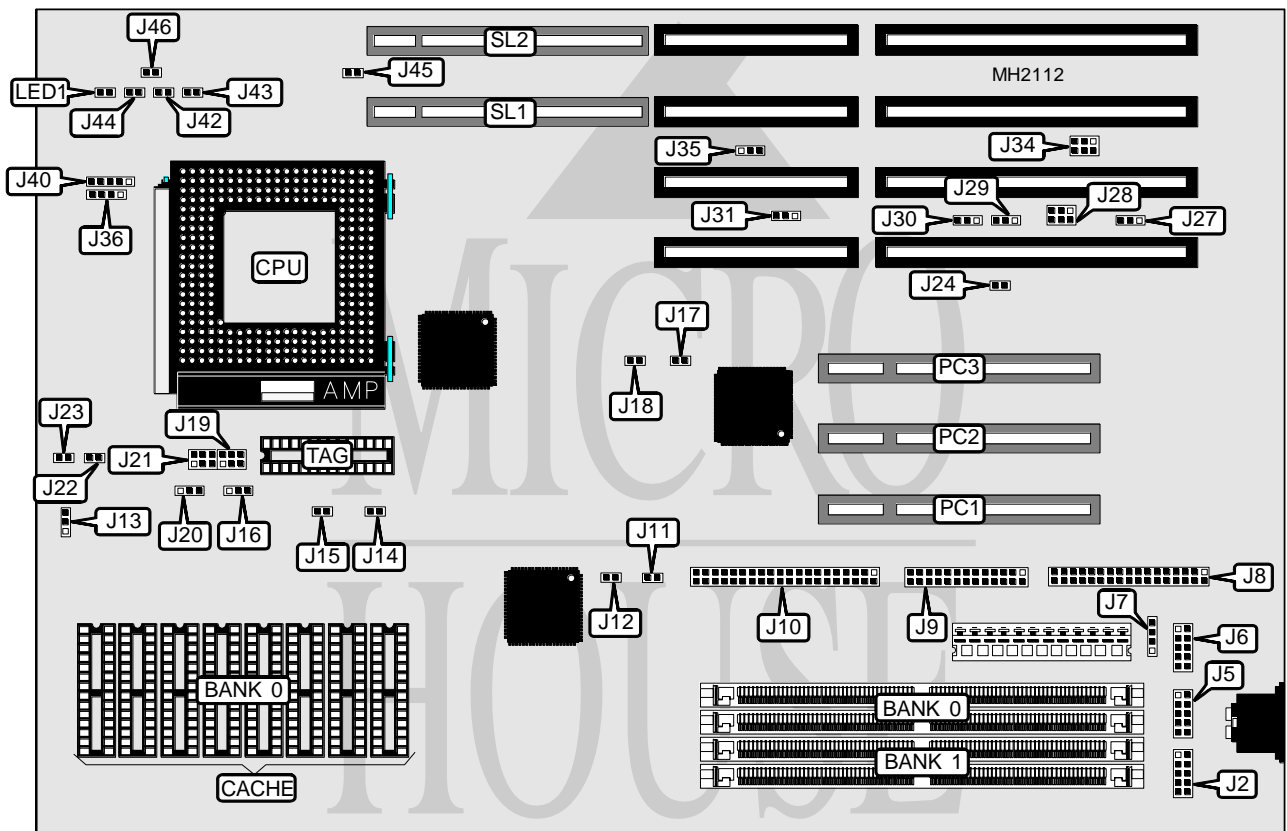


AMERICAN MEGATRENDS, INC. ATLAS VIP

Processor	Pentium
Processor Speed	90/100MHz
Chip Set	American Megatrends
Max. Onboard DRAM	128MB
Cache	256/512KB
BIOS	AMI
Dimensions	330mm x 218mm
I/O Options	32-bit PCI slots (3), 32-bit VESA local bus slots (2), floppy drive interface, IDE interface, parallel port, PS/2 mouse port, serial ports (2)
NPU Options	None



CONNECTIONS			
Purpose	Location	Purpose	Location
PS/2 mouse port	J2	Power LED & keylock	J40
Serial port 2	J5	Reset switch	J42
Serial port 1	J6	IDE interface LED	J44
External battery	J7	Turbo switch	J46
Floppy drive interface	J8	Turbo LED	LED 1
Parallel port	J9	32-bit PCI slots	PC1 - PC3
IDE interface	J10	32-bit VESA Local bus slots	SL1 & SL2
Speaker	J36		

Continued on next page...

AMERICAN MEGATRENDS, INC.

ATLAS VIP

... continued from previous page

USER CONFIGURABLE SETTINGS		
Function	Jumper	Position
í Factory configured - do not alter	J11	Closed
í Factory configured - do not alter	J12	Open
í Factory configured - do not alter	J14	Open
í Factory configured - do not alter	J15	Open
í Factory configured - do not alter	J17	Open
í Factory configured - do not alter	J18	Open
í Factory configured - do not alter	J22	Open
í Factory configured - do not alter	J23	Open
í Flash BIOS write protect enabled	J24	Closed
Flash BIOS write protect disabled	J24	Open
í Serial port 1 IRQ select IRQ4	J27	pins 1 & 2 closed
Serial port 1 IRQ select IRQ3	J27	pins 2 & 3 closed
í Parallel port IRQ select IRQ7	J29	pins 1 & 2 closed
Parallel port IRQ select IRQ5	J29	pins 2 & 3 closed
í Serial port 2 IRQ select IRQ3	J30	pins 1 & 2 closed
Serial port 2 IRQ select IRQ4	J30	pins 2 & 3 closed
í Onboard mouse IRQ12 enabled	J31	pins 1 & 2 closed
Bus mouse IRQ12 enabled	J31	pins 2 & 3 closed
í CMOS memory normal operation	J35	pins 1 & 2 closed
CMOS memory clear	J35	pins 2 & 3 closed
í Factory configured - do not alter	J45	Closed

DRAM CONFIGURATION		
Size	Bank 0	Bank 1
2MB	(2) 256K x 36	NONE
4MB	(2) 512K x 36	NONE
4MB	(2) 256K x 36	(2) 256K x 36
8MB	(2) 1M x 36	NONE
8MB	(2) 512K x 36	(2) 512K x 36
10MB	(2) 256K x 36	(2) 1M x 36
16MB	(2) 2M x 36	NONE
16MB	(2) 1M x 36	(2) 1M x 36
32MB	(2) 2M x 36	(2) 2M x 36
32MB	(2) 4M x 36	NONE
34MB	(2) 256K x 36	(2) 4M x 36
40MB	(2) 1M x 36	(2) 4M x 36
64MB	(2) 8M x 36	NONE
64MB	(2) 4M x 36	(2) 4M x 36
128MB	(2) 8M x 36	(2) 8M x 36

Continued on next page...

AMERICAN MEGATRENDS, INC.

ATLAS VIP

... continued from previous page

CACHE CONFIGURATION		
Size	Bank 0	TAG
256KB	(8) 32K x 8	(1) 32K x 8
512KB	(8) 64K x 8	(1) 32K x 8

CACHE JUMPER CONFIGURATION			
Size	J13	J16	J20
256KB	pins 1 & 2 closed	pins 2 & 3 closed	pins 1 & 2 closed
512KB	pins 2 & 3 closed	pins 1 & 2 closed	pins 2 & 3 closed

CPU SPEED CONFIGURATION	
Speed	J43
60/66/90i/100iMHz	Open
50/100iMHz	Closed

3.3 VOLT POWER SOURCE CONFIGURATION		
Description	J19	J21
RG 1 regulator not used	Open	Open
Single regulator used	pins 1 & 2, 3 & 4, 5 & 6 closed	pins 1 & 2, 3 & 4, 5 & 6 closed

PARALLEL PORT DMA CONFIGURATION		
DMA channel	J28	J34
None	Open	Open
DRQ0	pins 1 & 2 closed	pins 1 & 2 closed
DRQ1	pins 3 & 4 closed	pins 3 & 4 closed
DRQ3	pins 5 & 6 closed	pins 5 & 6 closed