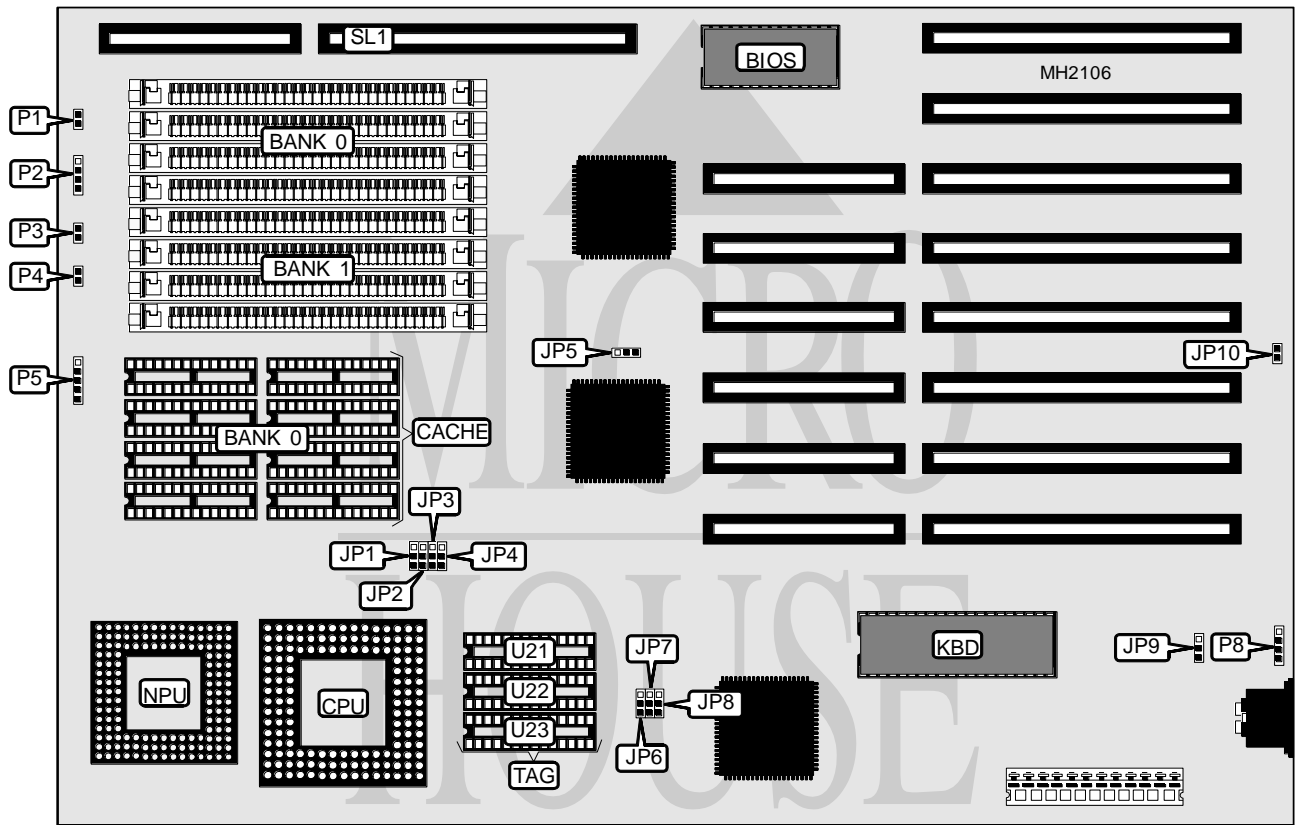


# OCEAN INFORMATION SYSTEMS, INC. HIPPO III 486

**Processor** 80486SX/80487SX/80486DX  
**Processor Speed** 20/25/33/40/50(internal)MHz  
**Chip Set** OPTI  
**Max. Onboard DRAM** 64MB (32MB on memory board)  
**Cache** 64/256KB  
**BIOS** AMI  
**Dimensions** 330mm x 218mm  
**I/O Options** 32-bit external memory card  
**NPU Options** 4167



CONNECTIONS			
Purpose	Location	Purpose	Location
Reset switch	P1	Power LED & keylock	P5
Speaker	P2	External battery	P8
Turbo switch	P3	32-bit external memory card	SL1
Turbo LED	P4		

Continued on next page...

# OCEAN INFORMATION SYSTEMS, INC.

## HIPPO III 486

... continued from previous page

USER CONFIGURABLE SETTINGS		
Function	Jumper	Position
í I/O bus speed select /4	JP5	pins 2 & 3 closed
I/O bus speed select /6	JP5	pins 1 & 2 closed
í Factory configured - do not alter	JP6	pins 1 & 2 closed
í Monitor type select monochrome	JP9	pins 2 & 3 closed
Monitor type select CGA/EGA/VGA	JP9	pins 1 & 2 closed
í CMOS memory normal operation	JP10	pins 1 & 2 closed
CMOS memory clear	JP10	pins 2 & 3 closed

DRAM CONFIGURATION				
Size	Bank 0	Bank 1	Bank 2	Bank 3
1MB	(4) 256K x 9	NONE	NONE	NONE
2MB	(4) 256K x 9	(4) 256K x 9	NONE	NONE
4MB	(4) 1M x 9	NONE	NONE	NONE
5MB	(4) 256K x 9	(4) 1M x 9	NONE	NONE
6MB	(4) 256K x 9	(4) 256K x 9	(4) 1M x 9	NONE
8MB	(4) 1M x 9	(4) 1M x 9	NONE	NONE
9MB	(4) 256K x 9	(4) 1M x 9	(4) 1M x 9	NONE
10MB	(4) 256K x 9	(4) 256K x 9	(4) 1M x 9	(4) 1M x 9
12MB	(4) 1M x 9	(4) 1M x 9	(4) 1M x 9	NONE
13MB	(4) 256K x 9	(4) 1M x 9	(4) 1M x 9	(4) 1M x 9
16MB	(4) 1M x 9	(4) 1M x 9	(4) 1M x 9	(4) 1M x 9
16MB	(4) 4M x 9	NONE	NONE	NONE
20MB	(4) 4M x 9	(4) 1M x 9	NONE	NONE
20MB	(4) 1M x 9	(4) 4M x 9	NONE	NONE
24MB	(4) 1M x 9	(4) 1M x 9	(4) 4M x 9	NONE
24MB	(4) 1M x 9	(4) 4M x 9	(4) 1M x 9	NONE
24MB	(4) 4M x 9	(4) 1M x 9	(4) 1M x 9	NONE
28MB	(4) 1M x 9	(4) 1M x 9	(4) 1M x 9	(4) 4M x 9
28MB	(4) 1M x 9	(4) 4M x 9	(4) 1M x 9	(4) 1M x 9
28MB	(4) 4M x 9	(4) 1M x 9	(4) 1M x 9	(4) 1M x 9
32MB	(4) 4M x 9	(4) 4M x 9	NONE	NONE
36MB	(4) 1M x 9	(4) 4M x 9	(4) 4M x 9	NONE
36MB	(4) 4M x 9	(4) 4M x 9	(4) 1M x 9	NONE
40MB	(4) 1M x 9	(4) 4M x 9	(4) 1M x 9	(4) 4M x 9
40MB	(4) 1M x 9	(4) 4M x 9	(4) 4M x 9	(4) 1M x 9
40MB	(4) 4M x 9	(4) 1M x 9	(4) 1M x 9	(4) 4M x 9
40MB	(4) 4M x 9	(4) 4M x 9	(4) 1M x 9	(4) 1M x 9
48MB	(4) 4M x 9	(4) 4M x 9	(4) 4M x 9	NONE
52MB	(4) 1M x 9	(4) 4M x 9	(4) 4M x 9	(4) 4M x 9
52MB	(4) 4M x 9	(4) 1M x 9	(4) 4M x 9	(4) 4M x 9
52MB	(4) 4M x 9	(4) 4M x 9	(4) 4M x 9	(4) 1M x 9
64MB	(4) 4M x 9	(4) 4M x 9	(4) 4M x 9	(4) 4M x 9

Note: Banks 2 & 3 are located on the external memory card.

Continued on next page...

# OCEAN INFORMATION SYSTEMS, INC.

## HIPPO III 486

... continued from previous page

CACHE CONFIGURATION			
Size	Bank 0	TAG (U21 & 22)	TAG (U23)
64KB	(8) 8K x 8	(1) 64K x 1	(1) 64K x 1
256KB	(8) 32K x 8	(1) 64K x 1	(1) 64K x 1

CACHE JUMPER CONFIGURATION			
Size	JP2	JP7	JP8
64KB	pins 2 & 3 closed	pins 2 & 3 closed	pins 2 & 3 closed
256KB	pins 1 & 2 closed	pins 1 & 2 closed	pins 1 & 2 closed

CPU TYPE CONFIGURATION			
Type	JP1	JP3	JP4
80486SX	N/A	pins 2 & 3 closed	pins 2 & 3 closed
80487SX	pins 1 & 2 closed	pins 1 & 2 closed	pins 1 & 2 closed
80486DX	pins 2 & 3 closed	pins 1 & 2 closed	pins 1 & 2 closed