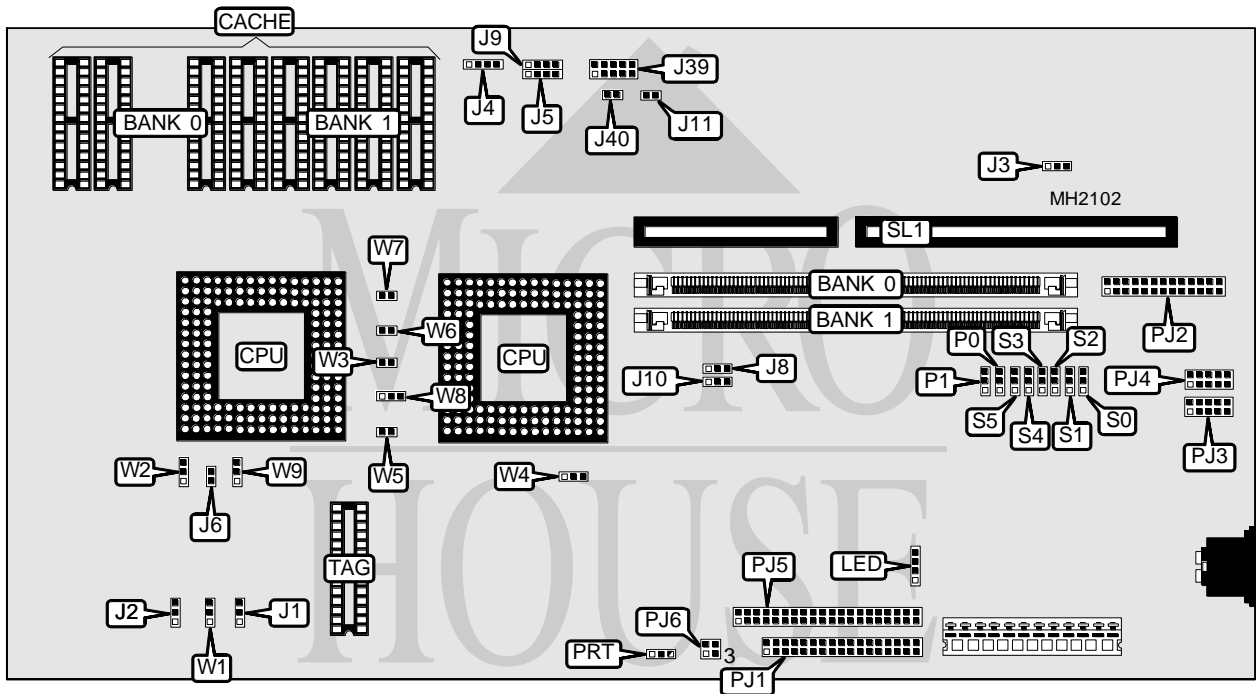


# CSS LABORATORIES, INC.

## MINIMAX/LITTLE MAX 486

<b>Processor</b>	80486SX/80486DX/80486DX2/Pentium Overdrive
<b>Processor Speed</b>	25/33/50(internal)/50/66(internal)MHz
<b>Chip Set</b>	SIS
<b>Max. Onboard DRAM</b>	16MB
<b>Cache</b>	64/128/256KB
<b>BIOS</b>	AMI
<b>Dimensions</b>	330mm x 218mm
<b>I/O Options</b>	Floppy drive interface, IDE interface, parallel port, serial ports (2)
<b>NPU Options</b>	None



CONNECTIONS			
Purpose	Location	Purpose	Location
Power LED & keylock	J4	Floppy drive interface	PJ1
Reset switch/Turbo LED	J5	Parallel port	PJ2
Turbo switch (not available on MiniMax)	J6	Serial port 1	PJ3
Speaker	J9	Serial port 2	PJ4
Equipment panel connector	J39	IDE interface	PJ5
IDE interface LED	J40	Riser Card	SL1
IDE interface LED (on board IDE)	LED		

Continued on next page...

# CSS LABORATORIES, INC.

## MINIMAX/LITTLE MAX 486

... continued from previous page.

USER CONFIGURABLE SETTINGS		
Function	Jumper	Position
í CPU speed select iOSC/1 (50/66MHz)	J1	pins 1 & 2 closed
CPU speed select iOSC/2 (25/33MHz)	J1	pins 2 & 3 closed
í Oscillator type select OSC1 (25/50MHz)	J2	pins 1 & 2 closed
Oscillator type select OSC3 (33/66MHz)	J2	pins 2 & 3 closed
í Monitor type select color	J3	pins 1 & 2 closed
Monitor type select monochrome	J3	pins 2 & 3 closed
í Factory configured - do not alter	J11	Open
í Floppy drive interface enabled	S4	pins 2 & 3 closed
Floppy drive interface disabled	S4	pins 1 & 2 closed
í IDE interface enabled	S5	pins 2 & 3 closed
IDE interface disabled	S5	pins 1 & 2 closed

SERIAL PORT CONFIGURATION (PJ3)				
Port 1	IRQ	S0	S1	PJ6
Disabled	N/A	pins 1 & 2 closed	pins 1 & 2 closed	N/A
COM1	IRQ4	pins 2 & 3 closed	pins 2 & 3 closed	pins 1 & 2 closed
COM2	IRQ3	pins 1 & 2 closed	pins 2 & 3 closed	pins 1 & 3 closed

SERIAL PORT CONFIGURATION (PJ4)				
Port 2	IRQ	S2	S3	PJ6
Disabled	N/A	pins 1 & 2 closed	pins 1 & 2 closed	N/A
COM1	IRQ4	pins 1 & 2 closed	pins 2 & 3 closed	pins 2 & 4 closed
COM2	IRQ3	pins 2 & 3 closed	pins 2 & 3 closed	pins 3 & 4 closed

PARALLEL PORT CONFIGURATION				
LPT	IRQ	P0	P1	PRT
Disabled	N/A	pins 1 & 2 closed	pins 1 & 2 closed	N/A
LPT 1	IRQ7	pins 2 & 3 closed	pins 1 & 2 closed	pins 2 & 3 closed
LPT 2	IRQ5	pins 2 & 3 closed	pins 2 & 3 closed	pins 1 & 2 closed
LPT 3	IRQ7	pins 1 & 2 closed	pins 2 & 3 closed	pins 2 & 3 closed

DRAM CONFIGURATION		
Size	Bank 0	Bank 1
1MB	(1) 256K x 36	NONE
2MB	(1) 256K x 36	(1) 256K x 36
2MB	(1) 512K x 36	NONE
4MB	(1) 1M x 36	NONE
5MB	(1) 256K x 36	(1) 1M x 36
6MB	(1) 512K x 36	(1) 1M x 36
8MB	(1) 1M x 36	(1) 1M x 36
8MB	(1) 2M x 36	NONE
10MB	(1) 512K x 36	(1) 2M x 36
16MB	(1) 2M x 36	(1) 2M x 36

Continued on next page...

# CSS LABORATORIES, INC.

## MINIMAX/LITTLE MAX 486

... continued from previous page.

DRAM JUMPER CONFIGURATION		
Size	J8	J10
1MB	Open	Open
2MB	pins 1 & 2 closed	pins 2 & 3 closed
2MB	pins 2 & 3 closed	Open
4MB	Open	Open
5MB	pins 1 & 2 closed	pins 2 & 3 closed
6MB	pins 2 & 3 closed	pins 1 & 2 closed
8MB	pins 1 & 2 closed	pins 2 & 3 closed
8MB	pins 2 & 3 closed	Open
10MB	pins 2 & 3 closed	pins 1 & 2 closed
16MB	pins 2 & 3 closed	pins 1 & 2 closed

Note: This board accepts 4M x 36 SIMMS, but jumper settings are not identified by the manufacturer.

CACHE CONFIGURATION			
Size	Bank 0	Bank 1	TAG
64KB	(4) 8K x 8	(4) 8K x 8	(1) 8K x 8
128KB	(4) 32K x 8	NONE	(1) 32K x 8
256KB	(4) 32K x 8	(4) 32K x 8	(1) 32K x 8

CACHE JUMPER CONFIGURATION				
Size	W6	W7	W8	W9
64KB	Open	Open	pins 2 & 3 closed	pins 2 & 3 closed
128KB	Open	Closed	pins 1 & 2 closed	pins 1 & 2 closed
256KB	Closed	Closed	pins 2 & 3 closed	pins 2 & 3 closed

CPU TYPE CONFIGURATION			
Type	W2	W4	W5
80486SX	pins 1 & 2 closed	pins 1 & 2 closed	Closed
80486DX	pins 2 & 3 closed	pins 2 & 3 closed	Open

CPU TYPE CONFIGURATION (OVERDRIVE)		
Type	W1	W3
Overdrive installed	pins 1 & 2 closed	Closed
Overdrive not installed	pins 2 & 3 closed	Open

EQUIPMENT PANEL CONNECTOR PIN OUT	
Description	J39
Ground	pin 1
Power	pin 1
Hard drive LED	pin 3
Not used	pin 4
Power	pin 5
Ground	pin 6
Turbo LED	pin 7
Keyboard inhibit	pin 8
Power	pin 9

Reset button	pin 10
--------------	--------