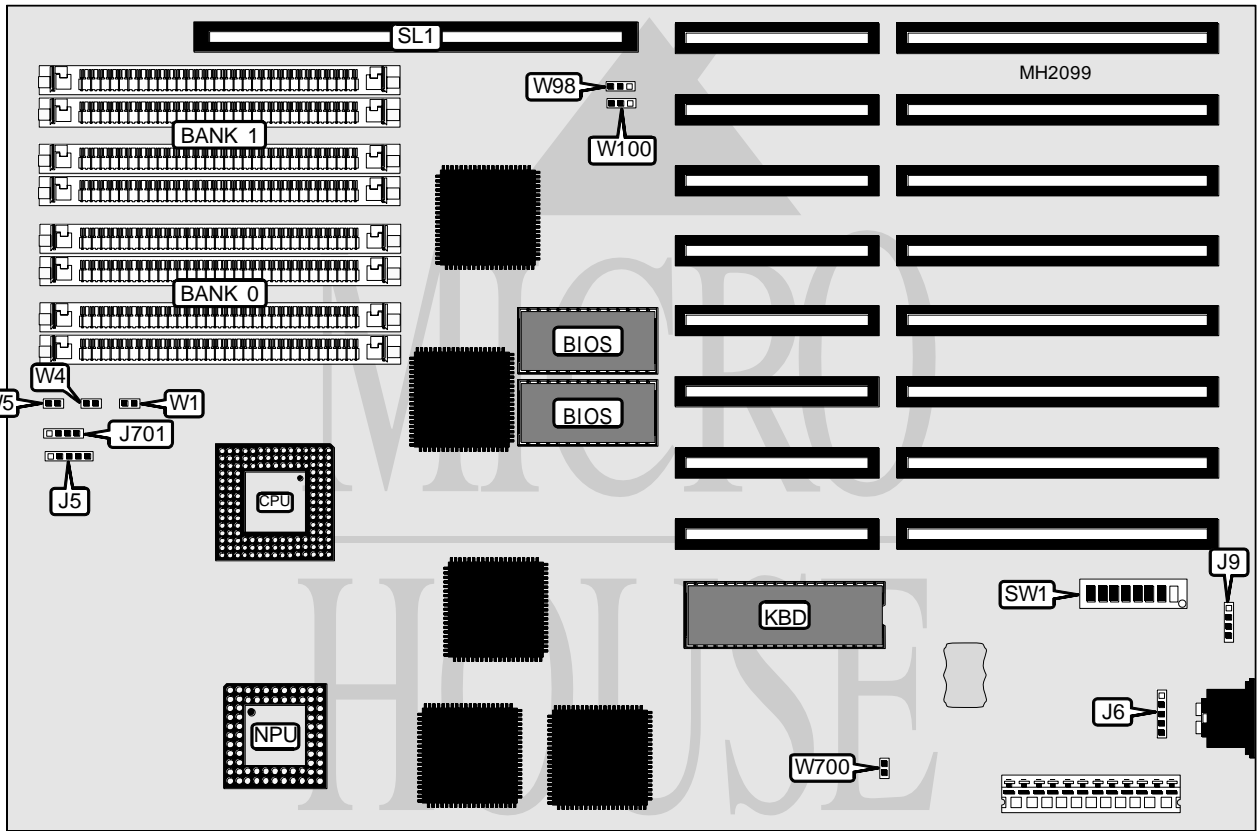


# MICRONICS COMPUTERS, INC.

## 386/25

<b>Processor</b>	80386DX
<b>Processor Speed</b>	25MHz
<b>Chip Set</b>	Micronics
<b>Max. Onboard DRAM</b>	16MB (8MB on memory card)
<b>Cache</b>	None
<b>BIOS</b>	Phoenix
<b>Dimensions</b>	330mm x 218mm
<b>I/O Options</b>	32-bit memory card
<b>NPU Options</b>	80387DX



CONNECTIONS			
Purpose	Location	Purpose	Location
Power LED & keylock	J5	Reset switch	W1
External keyboard connector	J6	Turbo LED	W4
External battery	J9	Turbo switch	W5
Speaker	J701	32-bit external memory card	SL1

Continued on next page...

**MICRONICS COMPUTERS, INC.**  
**3 8 6 / 2 5**

... continued from previous page.

USER CONFIGURABLE SETTINGS		
Function	Jumper/Switch	Position
í Factory configured - do not alter	W700	Open
í Factory configured - do not alter	SW1/1	Off
í NPU disabled	SW1/2	Off
NPU enabled	SW1/2	On
í BIOS not relocated	SW1/4	Off
BIOS relocated	SW1/4	On
í Factory configured - do not alter	SW1/5	Off
í Monitor type select CGA/EGA/VGA	SW1/6	On
Monitor type select monochrome	SW1/6	Off
í Factory configured - do not alter	SW1/7	Off

DRAM CONFIGURATION				
Size	Bank 0	Bank 1	Bank 2	Bank 3
1MB	(4) 256K x 9	NONE	NONE	NONE
2MB	(4) 256K x 9	(4) 256K x 9	NONE	NONE
4MB	(4) 1M x 9	NONE	NONE	NONE
5MB	(4) 256K x 9	(4) 1M x 9	NONE	NONE
6MB	(4) 256K x 9	(4) 256K x 9	(4) 1M x 9	NONE
8MB	(4) 1M x 9	(4) 1M x 9	NONE	NONE
9MB	(4) 256K x 9	(4) 1M x 9	(4) 1M x 9	NONE
10MB	(4) 256K x 9	(4) 256K x 9	(4) 1M x 9	(4) 1M x 9
12MB	(4) 1M x 9	(4) 1M x 9	(4) 1M x 9	NONE
13MB	(4) 256K x 9	(4) 1M x 9	(4) 1M x 9	(4) 1M x 9
16MB	(4) 1M x 9	(4) 1M x 9	(4) 1M x 9	(4) 1M x 9

Note: Banks 2 & 3 are located on the external memory card.

DRAM JUMPER CONFIGURATION (MEMORY CARD)			
Bank	Type	W98	W100
Bank 0/1	256K x 9	pins 1 & 2 closed	pins 1 & 2 closed
Bank 0/1	1M x 9	pins 2 & 3 closed	pins 2 & 3 closed

CPU SPEED CONFIGURATION		
Speed	SW1/3	SW1/8
25MHz	On	Off