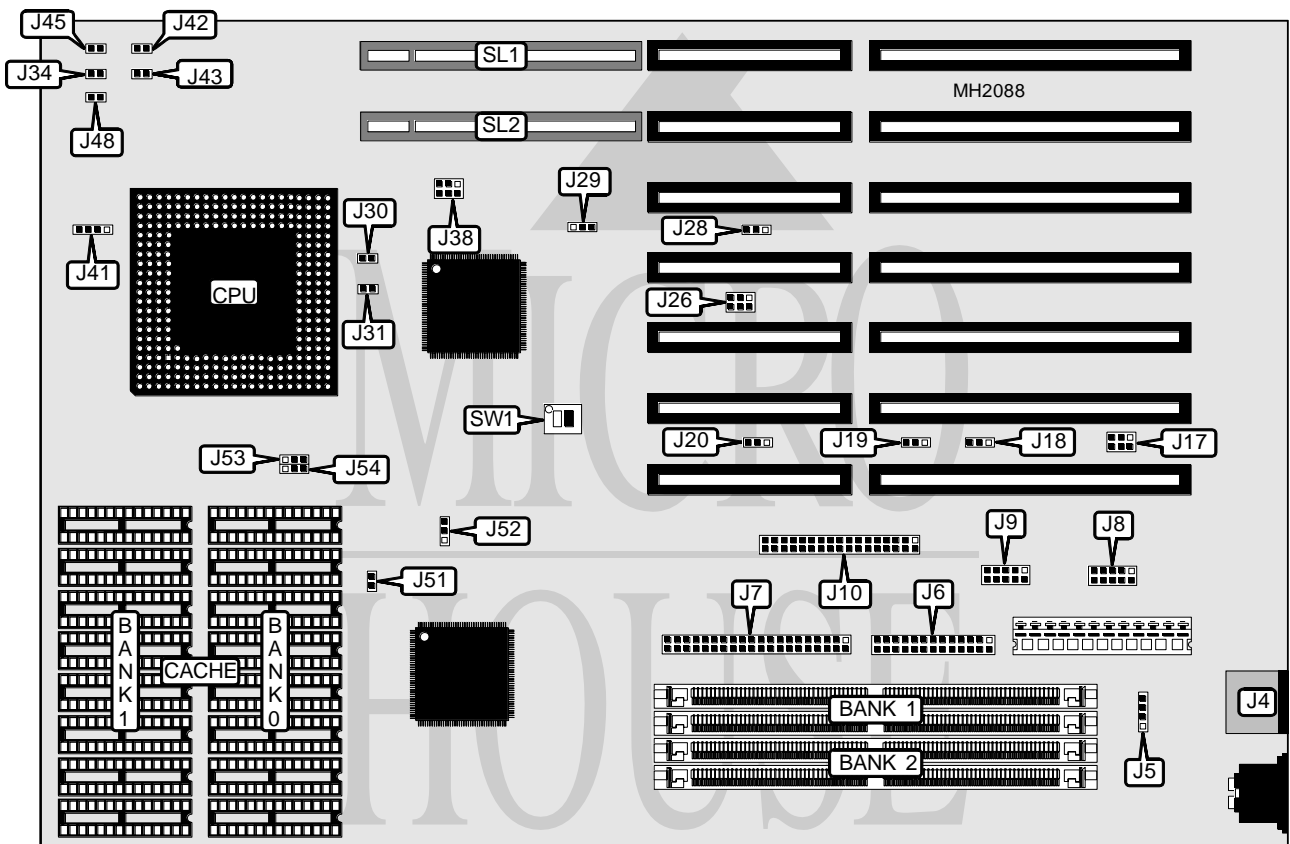


# AST RESEARCH, INC. BRAVO MT P/60 (230598-001)

<b>Processor</b>	Pentium
<b>Processor Speed</b>	60/66MHz
<b>Chip Set</b>	AST
<b>Max. Onboard DRAM</b>	128MB
<b>Cache</b>	256/512KB
<b>BIOS</b>	AMI
<b>Dimensions</b>	330mm x 218mm
<b>I/O Options</b>	32-bit VESA local bus slots (2), PS/2 mouse port, floppy drive interface, IDE interface, parallel port, serial ports (2)
<b>NPU Options</b>	None



CONNECTIONS			
Purpose	Location	Purpose	Location
PS/2 mouse port	J4	Speaker	J34
External battery	J5	IDE interface LED	J41
Parallel port	J6	Power LED connector	J42
IDE interface	J7	Reset switch	J43
Serial port 1	J8	Turbo switch (not used)	J45
Serial port 2	J9	Power LED & keylock (not used)	J48
Floppy drive interface	J10	32-bit VESA Local bus slots	SL1 & SL2

Continued next page...

**AST RESEARCH, INC.**  
**BRAVO MT P/60 (230598-001)**

... continued from previous page.

USER CONFIGURABLE SETTINGS		
Function	Jumper/Switch	Position
í Factory configured - do not alter	J13	Open
í Factory configured - do not alter	J17	Open
í Parallel port IRQ select IRQ7	J18	pins 1 & 2 closed
Parallel port IRQ select IRQ5	J18	pins 2 & 3 closed
í Factory configured - do not alter	J26	Open
í On board mouse enabled	J28	pins 1 & 2 closed
On board mouse disabled	J28	pins 2 & 3 closed
í CMOS memory normal operation	J29	pins 1 & 2 closed
CMOS memory clear	J29	pins 2 & 3 closed
í Flash BIOS update enabled	J51	Closed
Flash BIOS update disabled	J51	Open
í Factory configured - do not alter	SW1/1	Off
í Monitor type select color	SW1/2	On
Monitor type select monochrome	SW1/2	Off

SERIAL PORT CONFIGURATION			
Port 1	Port 2	J19	J20
IRQ3	IRQ4	pins 2 & 3 closed	pins 2 & 3 closed
IRQ4	IRQ3	pins 1 & 2 closed	pins 1 & 2 closed

DRAM CONFIGURATION		
Size	Bank 0	Bank 1
2MB	(2) 256K x 36	NONE
4MB	(2) 256K x 36	(2) 256K x 36
8MB	(2) 1M x 36	NONE
16MB	(2) 1M x 36	(2) 1M x 36
32MB	(2) 4M x 36	NONE
64MB	(2) 4M x 36	(2) 4M x 36
64MB	(2) 8M x 36	NONE
128MB	(2) 8M x 36	(2) 8M x 36

CACHE CONFIGURATION		
Size	Bank 0	Bank 1
256KB	(8) 32K x 8	NONE
512KB	(8) 32K x 8	(8) 32K x 8

Note: This system board may only support 256KB cache.

CACHE JUMPER CONFIGURATION					
Size	J30	J31	J52	J53	J54
256KB	Open	Closed	1 & 2	1 & 2	1 & 2
512KB	Closed	Closed	2 & 3	2 & 3	2 & 3

Note: Pins designated should be in the closed position.

Continued next page...

AST RESEARCH, INC.  
BRAVO MT P/60 (230598-001)

... continued from previous page.

CPU SPEED CONFIGURATION	
Speed	J38
60MHz	pins 1 & 2, 5 & 6 closed
66MHz	pins 3 & 4 closed