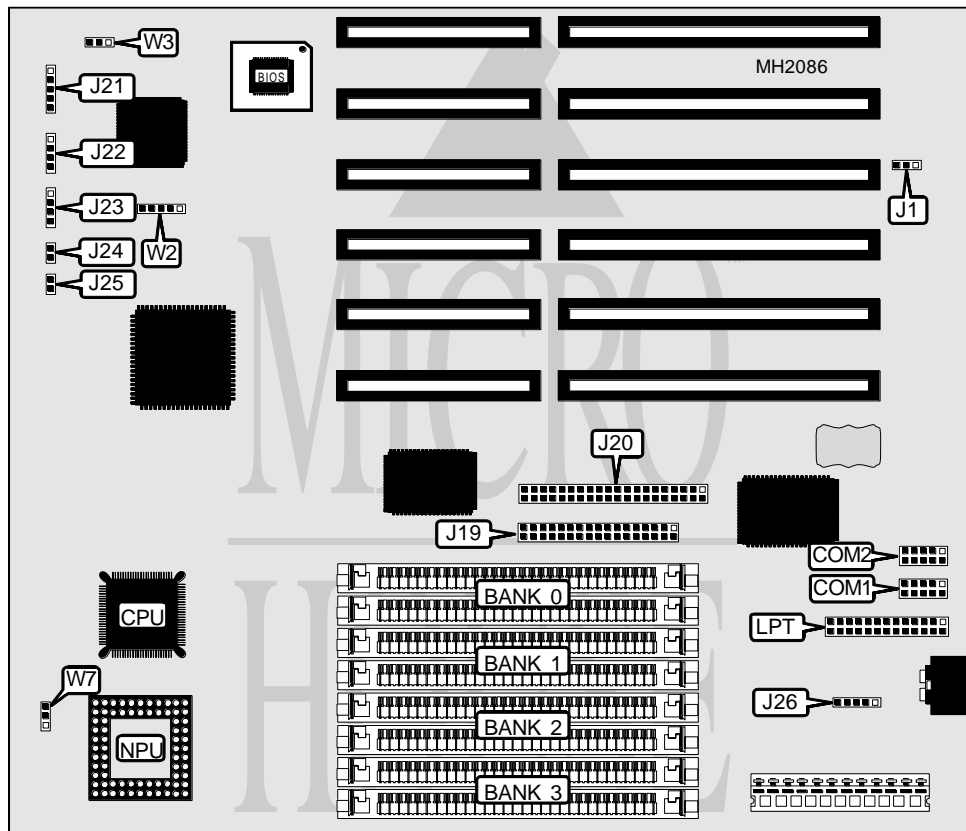


DESTINY COMPUTERS, INC. BLITZ 486 SLC-2

Processor	80486SLC2	
Processor Speed	25/33/40/50(internal)/66(internal)/80iMHz	
Chip Set	OPTI	
Max. onboard DRAM	16MB	
Cache	16KB	
BIOS	AMI	
Dimensions	330mm x 218mm	
I/O Options	Floppy drive interface, IDE interface, parallel port, PS/2 mouse port,	serial ports (2)
NPU Options	80387SX	



CONNECTIONS			
Purpose	Location	Purpose	Location
Serial port 1	COM1	Speaker	J22
Serial port 2	COM2	Turbo switch & LED	J23
Parallel port	LPT	IDE interface LED	J24
Floppy drive interface	J19	Reset switch	J25
IDE interface	J20	PS/2 mouse connector	J26
Power LED & keylock	J21		

Continued on next page...

DESTINY COMPUTERS, INC.
BLITZ 486 SLC-2

... continued from previous page.

USER CONFIGURABLE SETTINGS		
Function	Jumper	Position
í CMOS normal operation	J1	pins 1 & 2 closed
CMOS memory reset	J1	pins 2 & 3 closed
í Factory configured - do not alter	W2	N/A
í Monitor type select color	W3	pins 1 & 2 closed
Monitor type select monochrome	W3	pins 2 & 3 closed
í NPU synchronous with CPU	W7	pins 1 & 2 closed
NPU asynchronous with CPU	W7	pins 2 & 3 closed

DRAM CONFIGURATION				
Size	Bank 0	Bank 1	Bank 2	Bank 3
1MB	(2) 256K x 9	(2) 256K x 9	NONE	NONE
2MB	(2) 256K x 9	(2) 256K x 9	(2) 256K x 9	(2) 256K x 9
2MB	(2) 1M x 9	NONE	NONE	NONE
3MB	(2) 256K x 9	(2) 256K x 9	(2) 1M x 9	NONE
4MB	(2) 1M x 9	(2) 1M x 9	NONE	NONE
5MB	(2) 256K x 9	(2) 256K x 9	(2) 1M x 9	(2) 1M x 9
6MB	(2) 1M x 9	(2) 1M x 9	(2) 1M x 9	NONE
8MB	(2) 4M x 9	NONE	NONE	NONE
8MB	(2) 1M x 9	(2) 1M x 9	(2) 1M x 9	(2) 1M x 9
9MB	(2) 256K x 9	(2) 256K x 9	(2) 4M x 9	NONE
10MB	(2) 1M x 9	(2) 4M x 9	NONE	NONE
12MB	(2) 1M x 9	(2) 1M x 9	(2) 4M x 9	NONE
14MB	(2) 1M x 9	(2) 1M x 9	(2) 1M x 9	(2) 4M x 9
16MB	(2) 4M x 9	(2) 4M x 9	NONE	NONE