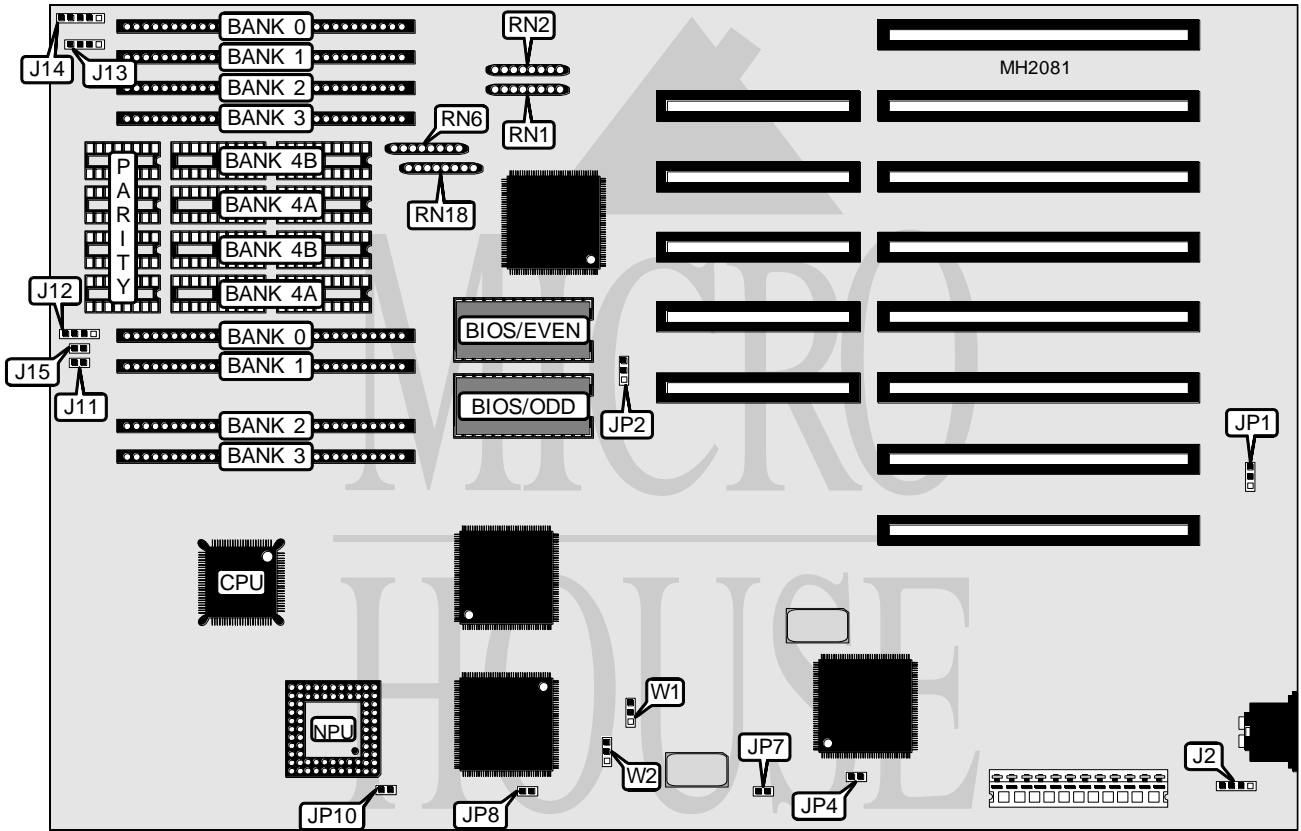


TMC RESEARCH CORPORATION P A T 3 X C A

Processor 80386SX
Processor Speed 16MHz
Chip Set NEAT
Max. Onboard DRAM 8MB
Cache None
BIOS Unidentified
Dimensions 330mm x 215mm
I/O Options None
NPU Options 80387SX



CONNECTIONS			
Purpose	Location	Purpose	Location
External battery	J2	Speaker	J13
Reset switch	J11	Power LED & keylock	J14
Turbo LED	J12	Turbo switch	J15

Continued on next page...

TMC RESEARCH CORPORATION

PAT3XCA

... continued from previous page

USER CONFIGURABLE SETTINGS		
Function	Jumper	Position
í Battery type select internal	JP1	pins 1 & 2 closed
Battery type select external	JP1	Open
í BIOS type select 27256	JP2	pins 2 & 3 closed
BIOS type select 27128	JP2	pins 1 & 2 closed
í Monitor type select color	JP4	Closed
Monitor type select monochrome	JP4	Open
í NPU disabled	JP7	Closed
NPU enabled	JP7	Open
í Pipeline mode enabled	JP8	Closed
Pipeline mode disabled	JP8	Open
í Factory configured - do not alter	JP10	N/A
í Factory configured - do not alter	W1	N/A
í Factory configured - do not alter	W2	N/A

DRAM CONFIGURATION							
Size	Bank 0	Bank 1	Bank 2	Bank 3	Bank 4A	Bank 4B	PARITY
512KB	(2) 256K x 9	NONE	NONE	NONE	NONE	NONE	NONE
512KB	NONE	NONE	NONE	NONE	(4) 44256	NONE	(2) 41256
1MB	(2) 256K x 9	(2) 256K x 9	NONE	NONE	NONE	NONE	NONE
1MB	(2) 256K x 9	NONE	NONE	NONE	(4) 44256	NONE	(2) 41256
1MB	NONE	NONE	(2) 256K x 9	NONE	(4) 44256	NONE	(2) 41256
1MB	NONE	NONE	NONE	NONE	(4) 44256	(4) 44256	(4) 41256
2MB	(2) 256K x 9	(2) 256K x 9	(2) 256K x 9	(2) 256K x 9	NONE	NONE	NONE
2MB	(2) 1M x 9	NONE	NONE	NONE	NONE	NONE	NONE
2MB	(2) 256K x 9	(2) 256K x 9	NONE	NONE	(4) 44256	(4) 44256	(4) 41256
2MB	NONE	NONE	(2) 256K x 9	(2) 256K x 9	(4) 44256	(4) 44256	(4) 41256
3MB	(2) 1M x 9	NONE	NONE	NONE	(4) 44256	(4) 44256	(4) 41256
3MB	NONE	NONE	(2) 1M x 9	NONE	(4) 44256	(4) 44256	(4) 41256
4MB	(2) 1M x 9	(2) 1M x 9	NONE	NONE	NONE	NONE	NONE
5MB	(2) 256K x 9	(2) 256K x 9	(2) 1M x 9	(2) 1M x 9	NONE	NONE	NONE
5MB	(2) 1M x 9	(2) 1M x 9	NONE	NONE	(4) 44256	(4) 44256	(4) 41256
5MB	NONE	NONE	(2) 1M x 9	(2) 1M x 9	(4) 44256	(4) 44256	(4) 41256
6MB	(2) 1M x 9	(2) 1M x 9	(2) 1M x 9	NONE	NONE	NONE	NONE
7MB	(2) 1M x 9	(2) 1M x 9	(2) 1M x 9	NONE	(4) 44256	(4) 44256	(4) 41256
8MB	(2) 1M x 9	(2) 1M x 9	(2) 1M x 9	(2) 1M x 9	NONE	NONE	NONE

Note: In configurations in which only one of banks 0 and 1 or 2 and 3 are installed, memory will not be interleaved and will operate with wait states.

DIP DRAM BANK CONFIGURATION					
Bank 4A	Bank 4B	RN1	RN2	RN6	RN18
Bank 0	Bank 1	Installed	Not installed	Installed	Not installed
Bank 2	Bank 3	Not installed	Installed	Not installed	Installed