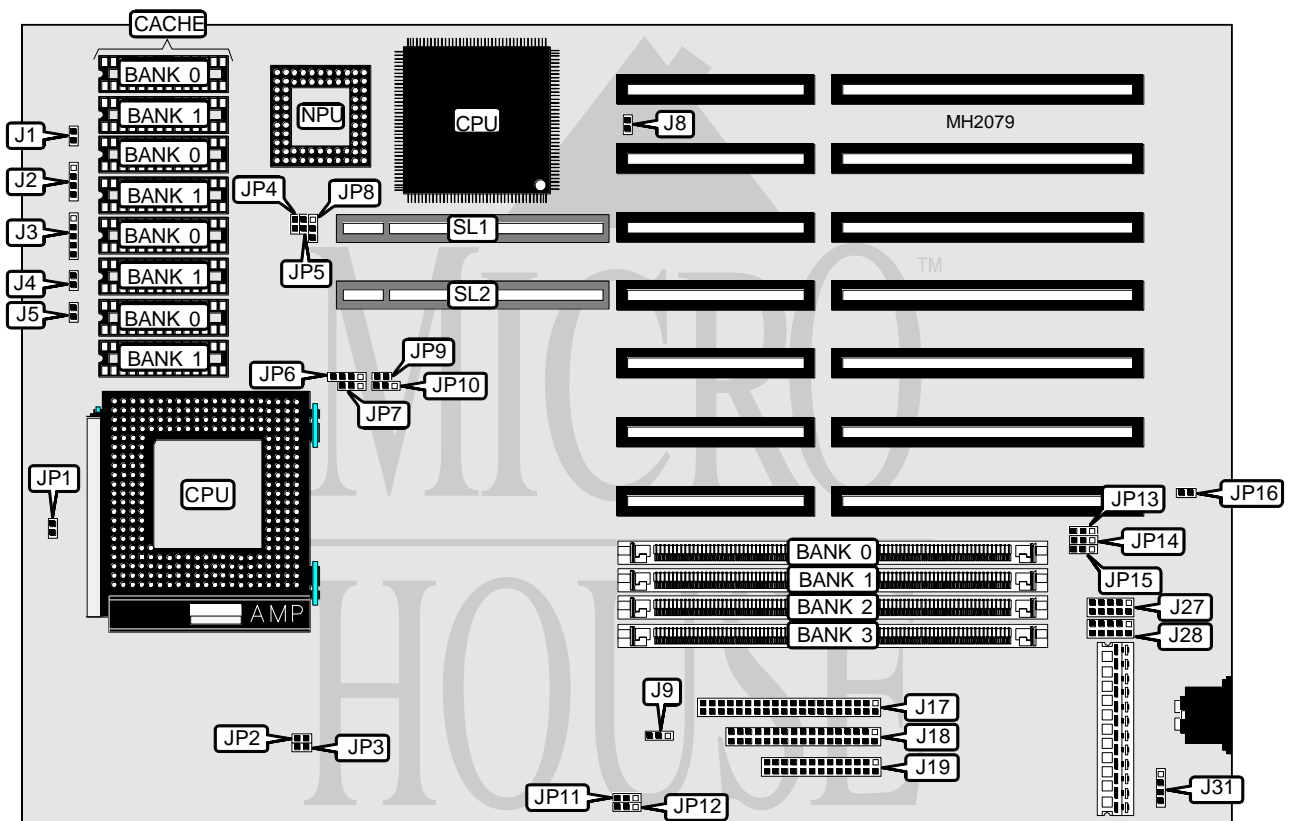


ALARIS

COUGAR 486BL

Processor	486BL2X/486BL3X/80486SX/80486DX/80486DX2/Pentium Overdrive
Processor Speed	25/33/40/50/50(internal)/66(internal)/75(internal)/100(internal)MHz
Chip Set	Alaris
Max. Onboard DRAM	64MB
Cache	256/512KB
BIOS	AMI/MR
Dimensions	330mm x 218mm
I/O Options	32-bit VESA local bus slots (2), floppy drive interface, IDE interface, parallel port, serial ports (2)
NPU Options	80387DX



CONNECTIONS			
Purpose	Location	Purpose	Location
Reset switch	J1	IDE interface	J17
Speaker	J2	Floppy drive interface	J18
Power LED & keylock	J3	Parallel port	J19
Turbo switch	J4	Serial port 2	J27
Turbo LED	J5	Serial port 1	J28
Chassis fan power	J8	External battery	J31
IDE interface LED	J9	32-bit VESA Local bus slots	SL1 & SL2

Continued on next page . . .

ALARIS COUGAR 486BL

... continued from previous page.

USER CONFIGURABLE SETTINGS		
Function	Jumper	Position
í CPU type select Blue Lightning	JP1	Open
CPU type select Intel SX/DX/DX2	JP1	Closed
í CPU type select Overdrive	JP7	pins 1 & 2 closed
CPU type select Intel DX/DX2	JP7	pins 2 & 3 closed
VESA IDE interface enabled	JP11	pins 1 & 2 closed
VESA IDE interface disabled	JP11	pins 2 & 3 closed
í Factory configured - do not alter	JP12	pins 2 & 3 closed
í Parallel port IRQ select IRQ7	JP15	pins 1 & 2 closed
Parallel port IRQ select IRQ5	JP15	pins 2 & 3 closed
í Factory configured - do not alter	JP16	N/A

DRAM CONFIGURATION				
Size	Bank 0	Bank 1	Bank 2	Bank 3
1MB	(1) 256K x 36	NONE	NONE	NONE
2MB	(1) 256K x 36	(1) 256K x 36	NONE	NONE
3MB	(1) 256K x 36	(1) 256K x 36	(1) 256K x 36	NONE
4MB	(1) 1M x 36	NONE	NONE	NONE
5MB	(1) 256K x 36	(1) 1M x 36	NONE	NONE
8MB	(1) 1M x 36	(1) 1M x 36	NONE	NONE
12MB	(1) 1M x 36	(1) 1M x 36	(1) 1M x 36	NONE
13MB	(1) 256K x 36	(1) 1M x 36	(1) 1M x 36	(1) 1M x 36
16MB	(1) 1M x 36	(1) 1M x 36	(1) 1M x 36	(1) 1M x 36
16MB	(1) 4M x 36	NONE	NONE	NONE
18MB	(1) 256K x 36	(1) 256K x 36	(1) 4M x 36	NONE
20MB	(1) 4M x 36	(1) 1M x 36	NONE	NONE
20MB	(1) 1M x 36	(1) 4M x 36	NONE	NONE
28MB	(1) 1M x 36	(1) 1M x 36	(1) 4M x 36	(1) 1M x 36
28MB	(1) 1M x 36	(1) 4M x 36	(1) 1M x 36	(1) 1M x 36
28MB	(1) 4M x 36	(1) 1M x 36	(1) 1M x 36	(1) 1M x 36
32MB	(1) 4M x 36	(1) 4M x 36	NONE	NONE
40MB	(1) 1M x 36	(1) 1M x 36	(1) 4M x 36	(1) 4M x 36
40MB	(1) 1M x 36	(1) 4M x 36	(1) 4M x 36	(1) 1M x 36
40MB	(1) 4M x 36	(1) 1M x 36	(1) 1M x 36	(1) 4M x 36
40MB	(1) 4M x 36	(1) 4M x 36	(1) 1M x 36	(1) 1M x 36
48MB	(1) 4M x 36	(1) 4M x 36	(1) 4M x 36	NONE
52MB	(1) 1M x 36	(1) 4M x 36	(1) 4M x 36	(1) 4M x 36
52MB	(1) 4M x 36	(1) 1M x 36	(1) 4M x 36	(1) 4M x 36
52MB	(1) 4M x 36	(1) 4M x 36	(1) 4M x 36	(1) 1M x 36
64MB	(1) 4M x 36	(1) 4M x 36	(1) 4M x 36	(1) 4M x 36

Continued on next page...

ALARIS

COUGAR 486BL

... continued from previous page.

CACHE CONFIGURATION		
Size	Bank 0	Bank 1
256KB	(4) 32K x 8	(4) 32K x 8
512KB	(4) 128K x 8	NONE

CACHE JUMPER CONFIGURATION		
Size	JP9	JP10
256KB	Open	pins 1 & 2 closed
512KB	Closed	pins 2 & 3 closed

CPU SPEED CONFIGURATION		
Speed	JP2	JP3
25MHz	Open	Open
33MHz	Open	Closed
40MHz	Closed	Open

Note: These settings are factory configured. Do not change these jumpers-- it will void the factory warranty.

VESA WAIT STATE CONFIGURATION	
Wait states	JP8
0 wait states	pins 1 & 2 closed
1 wait state	pins 2 & 3 closed

VESA BUS SPEED CONFIGURATION		
CPU speed	JP4 (ID2)	JP5 (ID3)
<= 33MHz	Open	Open
> 33MHz	Closed	Closed

DMA CHANNEL CONFIGURATION		
DMA	JP13	JP14
Channel 1	pins 1 & 2 closed	pins 1 & 2 closed
Channel 2	pins 2 & 3 closed	pins 2 & 3 closed