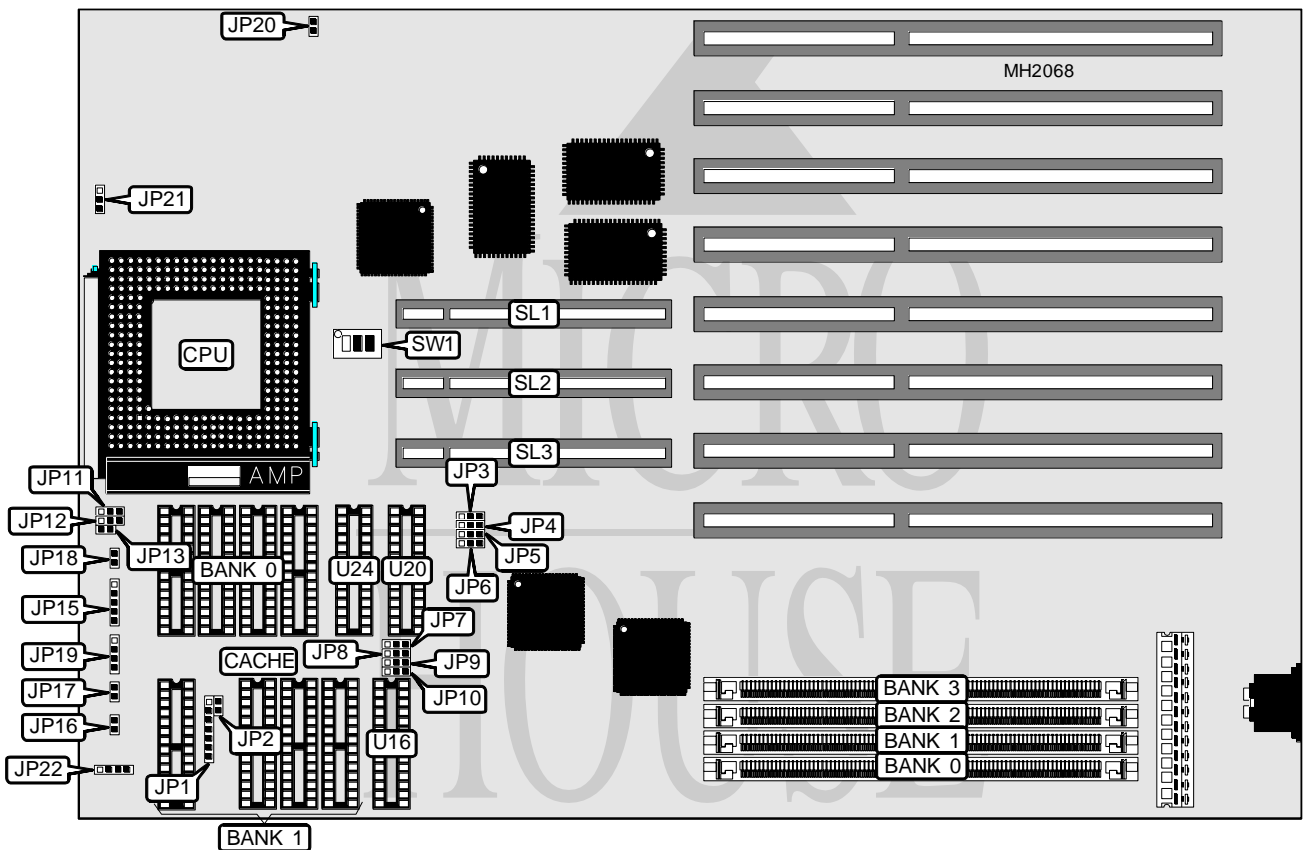


ELISA TECHNOLOGY, INC.

VITAL 486 EISA E- SERIES

Processor	80486SX/80487SX/80486DX/80486DX2/Pentium Overdrive
Processor Speed	16/20/25/33/50(internal)/50/66(internal)MHz
Chip Set	SIS
Max. Onboard DRAM	64MB
Cache	64/128/256/512/1024KB
BIOS	Award
Dimensions	330mm x 225mm
I/O Options	32-bit VESA local bus slots (3)
NPU Options	None



CONNECTIONS			
Purpose	Location	Purpose	Location
Power LED & keylock	JP15	Speaker	JP19
Turbo LED	JP16	Chassis fan power	JP22
Turbo switch	JP17	32-bit VESA Local bus slots	SL1 - SL3
Reset switch	JP18		

Continued on next page . . .

ELISA TECHNOLOGY, INC.
VITAL 486 EISA

... continued from previous page.

USER CONFIGURABLE SETTINGS		
Function	Jumper	Position
í Monitor type select color	JP20	Closed
Monitor type select monochrome	JP20	Open
í Factory configured - do not alter	JP21	pins 2 & 3 closed

DRAM CONFIGURATION				
Size	Bank 0	Bank 1	Bank 2	Bank 3
1MB	(1) 256K x 36	NONE	NONE	NONE
2MB	(1) 256K x 36	(1) 256K x 36	NONE	NONE
4MB	(1) 1M x 36	NONE	NONE	NONE
6MB	(1) 256K x 36	(1) 256K x 36	(1) 1M x 36	NONE
8MB	(1) 1M x 36	(1) 1M x 36	NONE	NONE
10MB	(1) 256K x 36	(1) 256K x 36	(1) 1M x 36	(1) 1M x 36
12MB	(1) 1M x 36	(1) 1M x 36	(1) 1M x 36	NONE
16MB	(1) 1M x 36	(1) 1M x 36	(1) 1M x 36	(1) 1M x 36
16MB	(1) 4M x 36	NONE	NONE	NONE
18MB	(1) 256K x 36	(1) 256K x 36	(1) 4M x 36	NONE
20MB	(1) 1M x 36	(1) 4M x 36	NONE	NONE
24MB	(1) 1M x 36	(1) 1M x 36	(1) 4M x 36	NONE
32MB	(1) 4M x 36	(1) 4M x 36	NONE	NONE
36MB	(1) 1M x 36	(1) 4M x 36	(1) 4M x 36	NONE
40MB	(1) 1M x 36	(1) 1M x 36	(1) 4M x 36	(1) 4M x 36
48MB	(1) 4M x 36	(1) 4M x 36	(1) 4M x 36	NONE
64MB	(1) 4M x 36	(1) 4M x 36	(1) 4M x 36	(1) 4M x 36

CACHE CONFIGURATION				
Size	Bank 0	Bank 1	TAG (U16)	TAG (U20 - U24)
64KB	(4) 8K x 8	(4) 8K x 8	(1) 16K x 1	(1) 16K x 4
128KB	(4) 32K x 8	NONE	(1) 16K x 1	(1) 16K x 4
256KB	(4) 32K x 8	(4) 32K x 8	(1) 16K x 1	(1) 16K x 4
512KB	(4) 128K x 8	NONE	(1) 64K x 1	(1) 64K x 4
1MB	(4) 128K x 8	(4) 128K x 8	(1) 64K x 1	(1) 64K x 4

CACHE JUMPER CONFIGURATION					
Size	JP1	JP2	JP3	JP4	JP5
64KB	2 & 3	Closed	1 & 2	1 & 2	1 & 2
128KB	1 & 2, 3 & 4	Open	2 & 3	1 & 2	1 & 2
256KB	2 & 3, 4 & 5	Open	2 & 3	2 & 3	1 & 2
512KB	1 & 2, 3 & 4, 5 & 6	Open	2 & 3	2 & 3	2 & 3
1MB	2 & 3, 4 & 5, 6 & 7	Open	2 & 3	2 & 3	2 & 3

Note: Pins designated should be in the closed position.

Continued on next page...

ELISA TECHNOLOGY, INC.

VITAL 486 EISA

... continued from previous page.

CACHE JUMPER CONFIGURATION (CON'T)					
Size	JP6	JP7	JP8	JP9	JP10
64KB	1 & 2	1 & 2	1 & 2	1 & 2	1 & 2
128KB	1 & 2	2 & 3	1 & 2	1 & 2	1 & 2
256KB	1 & 2	2 & 3	2 & 3	1 & 2	1 & 2
512KB	1 & 2	2 & 3	2 & 3	2 & 3	1 & 2
1MB	2 & 3	2 & 3	2 & 3	2 & 3	2 & 3

Note: Pins designated should be in the closed position.

CPU TYPE CONFIGURATION			
Type	JP11	JP12	JP13
80486SX	Open	pins 2 & 3 closed	Open
80487SX	pins 2 & 3 closed	pins 1 & 2 closed	Closed
80486DX	pins 1 & 2 closed	pins 1 & 2 closed	Closed

CPU SPEED CONFIGURATION			
Speed	SW1/1	SW1/2	SW1/3
16MHz	Off	On	Off
20MHz	Off	Off	On
25MHz	On	Off	On
33MHz	Off	On	On
50iMHz	On	Off	On
50MHz	On	On	Off
66iMHz	Off	On	On