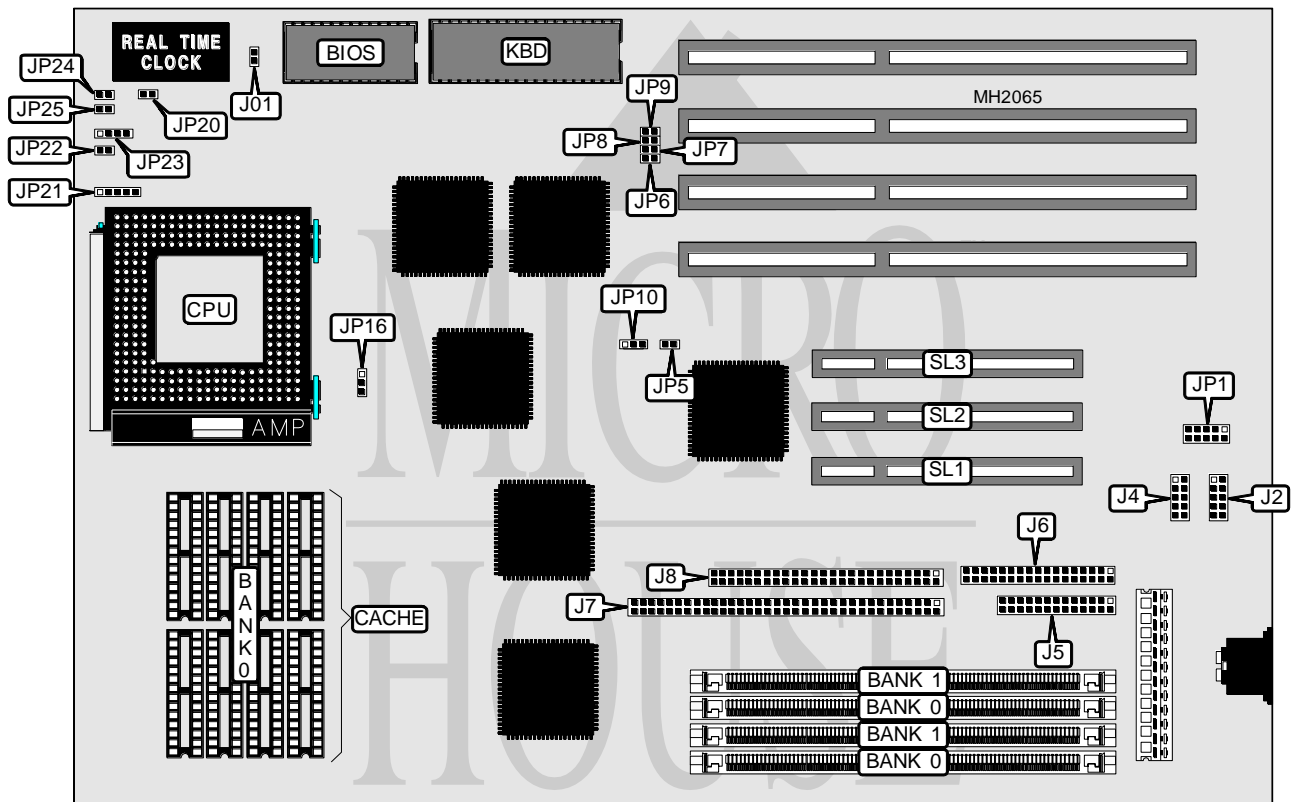


## ADVANCED INTEGRATION RESEARCH, INC.

## 54CEP

<b>Processor</b>	Pentium Overdrive/Pentium
<b>Processor Speed</b>	90/100MHz
<b>Chip Set</b>	Intel
<b>Max. Onboard DRAM</b>	128MB
<b>Cache</b>	256/512KB
<b>BIOS</b>	AMI
<b>Dimensions</b>	330mm x 220mm
<b>I/O Options</b>	32-bit PCI bus slots (3), floppy drive interface, SCSI-2 interface (2), parallel port, serial ports (2), green PC feature connector
<b>NPU Options</b>	None



CONNECTIONS			
Purpose	Location	Purpose	Location
Serial port 1	J2	Reset switch	JP20
Serial port 2	J4	Power LED & keylock	JP21
Parallel port	J5	Hard drive interface LED	JP22
Floppy drive interface	J6	Speaker	JP23
Wide SCSI-2 interface	J7	Turbo switch	JP24
SCSI-2 interface	J8	Turbo LED	JP25
Green PC feature connector	JP1	32-bit PCI bus slots	SL1 - SL3

Continued on next page . . .

**ADVANCED INTEGRATION RESEARCH, INC.**  
**54CEP**

... continued from previous page.

USER CONFIGURABLE SETTINGS		
Function	Jumper	Position
í Monitor type select monochrome/VGA/EGA	JP6	Open
Monitor type select CGA	JP6	Closed
í Factory configured - do not alter	JP7	Open
í CMOS memory normal operation	JP8	Open
CMOS memory clear	JP8	Closed
í Factory configured - do not alter	JP9	Open
í Parallel port IRQ select IRQ7	JP10	pins 2 & 3 closed
Parallel port IRQ select IRQ5	JP10	pins 1 & 2 closed

DRAM CONFIGURATION		
Size	Bank 0	Bank 1
2MB	(2) 256K x 36	NONE
4MB	(2) 256K x 36	(2) 256K x 36
4MB	(2) 512K x 36	NONE
6MB	(2) 256K x 36	(2) 512K x 36
8MB	(2) 512K x 36	(2) 512K x 36
8MB	(2) 1M x 36	NONE
10MB	(2) 256K x 36	(2) 1M x 36
12MB	(2) 512K x 36	(2) 1M x 36
16MB	(2) 1M x 36	(2) 1M x 36
16MB	(2) 2M x 36	NONE
18MB	(2) 256K x 36	(2) 2M x 36
20MB	(2) 512K x 36	(2) 2M x 36
24MB	(2) 1M x 36	(2) 2M x 36
32MB	(2) 2M x 36	(2) 2M x 36
32MB	(2) 4M x 36	NONE
34MB	(2) 256K x 36	(2) 4M x 36
36MB	(2) 512K x 36	(2) 4M x 36
40MB	(2) 1M x 36	(2) 4M x 36
48MB	(2) 2M x 36	(2) 4M x 36
64MB	(2) 4M x 36	(2) 4M x 36
64MB	(2) 8M x 36	NONE
66MB	(2) 256K x 36	(2) 8M x 36
68MB	(2) 512K x 36	(2) 8M x 36
72MB	(2) 1M x 36	(2) 8M x 36
80MB	(2) 2M x 36	(2) 8M x 36
96MB	(2) 4M x 36	(2) 8M x 36
128MB	(2) 8M x 36	(2) 8M x 36

Continued on next page . . .

# ADVANCED INTEGRATION RESEARCH, INC.

## 54CEP

... continued from previous page.

CACHE CONFIGURATION	
Size	Bank 0
256KB	(8) 32K x 8
512KB	(8) 64K x 8

CACHE JUMPER CONFIGURATION	
Size	JP16
256KB	pins 1 & 2 closed
512KB	pins 2 & 3 closed

CPU SPEED CONFIGURATION	
Speed	JO1
90MHz	Open
100MHz	Closed

SCSI PORT CONFIGURATION	
Port	JP5
8- bit fast SCSI	Open
16- bit fast wide SCSI	Closed

Note: Only one SCSI port can be used at any time.

GREEN PC CONFIGURATION	
Description	JP1
Not used	pin 1
Keyboard P12 to enable/disable video signals. VGA feature connector: connect to pin 18.	pin 2
When keyboard P13 is low level, it switches other system device to stand-by mode.	pin 3
When keyboard P15 is low level, it switches other system device to stand-by mode.	pin 4
Ground	pin 5
Video card VSYNC controlled by keyboard P12. VGA feature connector: connect to pin 12.	pin 6
Video card HSYNC controlled by keyboard P13. VGA feature connector: connect to pin 11.	pin 7
Not used	pin 8
Not used	pin 9
Not used	pin 10