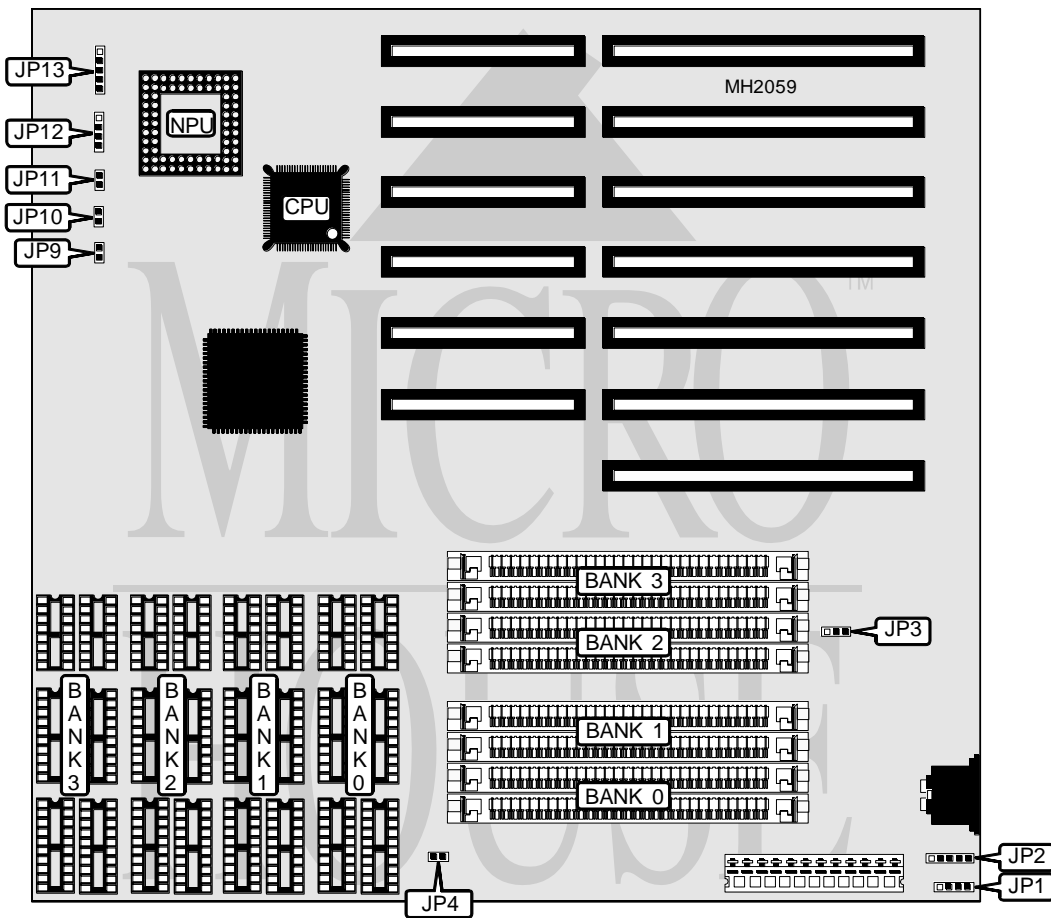


INFORMTECH INTERNATIONAL, INC.

QP386LH-16/25 VER. 1.0

Processor	80386SX
Processor Speed	16/25MHz
Chip Set	Highland
Max. Onboard DRAM	8MB
Cache	None
BIOS	AMI
Dimensions	220mm x 220mm
I/O Options	None
NPU Options	80387SX



CONNECTIONS			
Purpose	Location	Purpose	Location
External battery	JP1	Turbo LED	JP11
Keyboard	JP2	Speaker	JP12
Reset switch	JP9	Power LED & keylock	JP13
Turbo switch	JP10		

Continued on next page . . .

INFORMTECH INTERNATIONAL, INC.
QP386LH-16/25 VER. 1.0

... continued from previous page.

USER CONFIGURABLE SETTINGS		
Function	Jumper	Position
í Monitor type select VGA	JP3	N/A
Monitor type select CGA	JP3	Closed
Monitor type select monochrome	JP3	Open
í CMOS memory normal operation	JP4	Open
CMOS memory clear	JP4	Closed

DRAM CONFIGURATION (SIMM)				
Size	Bank 0	Bank 1	Bank 2	Bank 3
512KB	(2) 256K x 9	NONE	NONE	NONE
1MB	(2) 256K x 9	(2) 256K x 9	NONE	NONE
1.5MB	(2) 256K x 9	(2) 256K x 9	(2) 256K x 9	NONE
2MB	(2) 256K x 9	(2) 256K x 9	(2) 256K x 9	(2) 256K x 9
2MB	(2) 1M x 9	NONE	NONE	NONE
4MB	(2) 1M x 9	(2) 1M x 9	NONE	NONE
6MB	(2) 1M x 9	(2) 1M x 9	(2) 1M x 9	NONE
8MB	(2) 1M x 9	(2) 1M x 9	(2) 1M x 9	(2) 1M x 9

Note: SIMM modules and DIP chips cannot occupy the same bank.

DRAM CONFIGURATION								
Size	Bank 0	Parity 0	Bank 1	Parity 1	Bank 2	Parity 2	Bank 3	Parity 3
512KB	(4)44256	(2)41256	NONE	NONE	NONE	NONE	NONE	NONE
1MB	(4)44256	(2)41256	(4)44256	(2)41256	NONE	NONE	NONE	NONE
1.5MB	(4)44256	(2)41256	(4)44256	(2)41256	(4)44256	(2) 41256	NONE	NONE
2MB	(4)44256	(2)41256	(4)44256	(2)41256	(4)44256	(2) 41256	(4)44256	(2)41256

Note: SIMM modules and DIP chips cannot occupy the same bank.