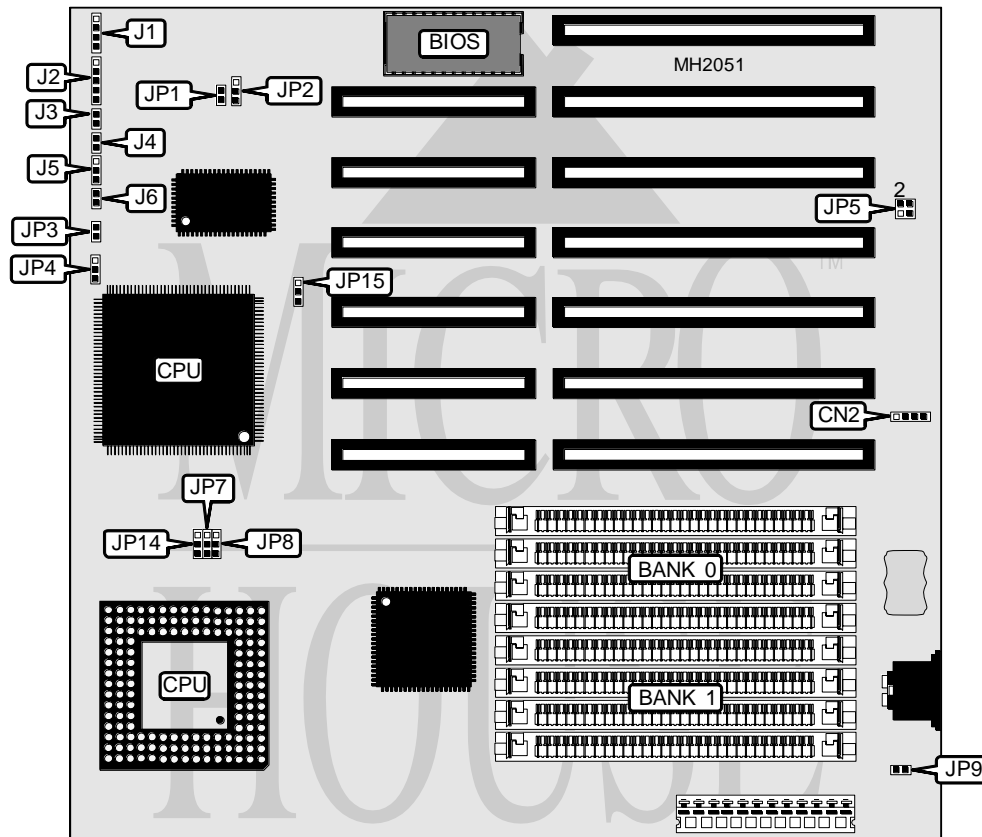


BIOSTAR MICROTECH INTERNATIONAL CORPORATION

MB - 1420 / 1425 / 1433 V

Processor 80486SX/80487SX/80486DX/80486DX2/Pentium Overdrive
Processor Speed 20/25/33/50(internal)/50/66(internal)MHz
Chip Set VLSI
Max. Onboard DRAM 32MB
Cache None
BIOS Award
Dimensions 230mm x 218mm
I/O Options None
NPU Options None



CONNECTIONS			
Purpose	Location	Purpose	Location
Speaker	J1	Turbo switch	J5
Power LED & keylock	J2	5v DC ground	J6
Turbo LED	J3	External battery	CN2
Reset switch	J4		

Continued next page...

BIOSTAR MICROTECH INTERNATIONAL CORPORATION

MB - 1420 / 1425 / 1433 V

... continued from previous page.

USER CONFIGURABLE SETTINGS		
Function	Jumper	Position
í Keyboard type select BTC keyboard	JP1	Closed
Normal operation	JP1	Open
í AT bus clock mode select asynchronous	JP2	pins 1 & 2 closed
AT bus clock mode select synchronous	JP2	pins 2 & 3 closed
í Monitor type select monochrome	JP3	Open
Monitor type select color	JP3	Closed
í 8042 turbo control pin select pin 30 closed	JP4	pins 1 & 2 closed
8042 turbo control pin select pin 23 closed	JP4	pins 2 & 3 closed
í CMOS memory normal operation	JP5	pins 1 & 2 closed
CMOS memory clear	JP5	pins 3 & 4 closed
í On board keyboard fuse enabled	JP9	Open
On board keyboard fuse disabled	JP9	Closed

DRAM CONFIGURATION		
Size	Bank 0	Bank 1
1MB	(4) 256K x 9	NONE
2MB	(4) 256K x 9	(4) 256K x 9
4MB	(4) 1M x 9	NONE
5MB	(4) 256K x 9	(4) 1M x 9
8MB	(4) 1M x 9	(4) 1M x 9
16MB	(4) 4M x 9	NONE
17MB	(4) 256K x 9	(4) 4M x 9
20MB	(4) 1M x 9	(4) 4M x 9
32MB	(4) 4M x 9	(4) 4M x 9

CPU TYPE CONFIGURATION (PQFP CPU INSTALLED)				
Type	JP7	JP8	JP14	JP15
80486SX (PQFP) & upgrade to DX/DX2	1 & 2	2 & 3	1 & 2	1 & 2
80486SX (PQFP) & upgrade to Overdrive	open	1 & 2	2 & 3	2 & 3

Note: Pins designated should be in the closed position.

CPU TYPE CONFIGURATION (PGA ONLY CPU INSTALLED)				
Type	JP7	JP8	JP14	JP15
80487SX	pins 1 & 2 closed	pins 2 & 3 closed	pins 2 & 3 closed	Open
80486DX/DX2	pins 1 & 2 closed	pins 2 & 3 closed	pins 1 & 2 closed	Open

Note: The PQFP CPU is optional and may not be present. If there is no PQFP, use the above settings.