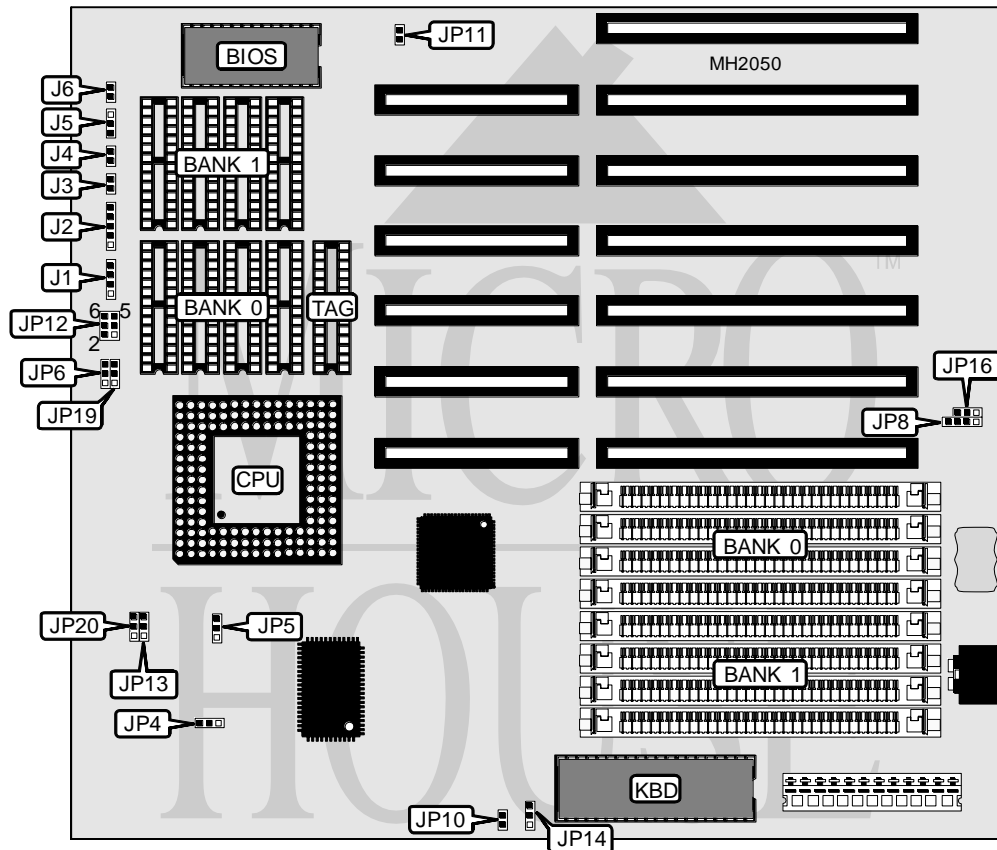


BIOSTAR MICROTECH INTERNATIONAL CORPORATION

MB 1433/1450AEA-P

Processor 80486SX/80487SX/80486DX/80486DX2/Pentium Overdrive
Processor Speed 20/25/33/50(internal)/50/66(internal)MHz
Chip Set VLSI
Max. Onboard DRAM 32MB
Cache 64/128/256KB
BIOS AMI
Dimensions 230mm x 218mm
I/O Options None
NPU Options None



CONNECTIONS			
Purpose	Location	Purpose	Location
Speaker	J1	Turbo switch	J5
Power LED & keylock	J2	5v DC ground	J6
Turbo LED	J3	External battery	JP8
Reset switch	J4		

Continued on next page . . .

BIOSTAR MICROTECH INTERNATIONAL CORPORATION

MB 1433/1450A EA - P

... continued from previous page.

USER CONFIGURABLE SETTINGS		
Function	Jumper	Position
í Factory configured - do not alter	JP4	pins 2 & 3 closed
í Tag RAM size select 7- bit	JP6	pins 1 & 2 closed
Tag RAM size select 8- bit	JP6	pins 2 & 3 closed
í Battery type select RTC 146818	JP11	Open
Battery type select Dallas 1287	JP11	Closed
í Monitor type select monochrome	JP14	pins 1 & 2 closed
Monitor type select color	JP14	pins 2 & 3 closed
í CMOS memory normal operation	JP16	pins 2 & 3 closed
CMOS memory clear	JP16	pins 1 & 2 closed

DRAM CONFIGURATION		
Size	Bank 0	Bank 1
1MB	(4) 256K x 9	NONE
2MB	(4) 256K x 9	(4) 256K x 9
4MB	(4) 1M x 9	NONE
5MB	(4) 256K x 9	(4) 1M x 9
8MB	(4) 1M x 9	(4) 1M x 9
16MB	(4) 4M x 9	NONE
20MB	(4) 4M x 9	(4) 1M x 9
32MB	(4) 4M x 9	(4) 4M x 9

CACHE CONFIGURATION			
Size	Bank 0	Bank 1	TAG
64KB	(4) 8K x 8	(4) 8K x 8	(1) 8K x 8
128KB	(4) 32K x 8	NONE	(1) 8K x 8
256KB	(4) 32K x 8	(4) 32K x 8	(1) 32K x 8

CACHE JUMPER CONFIGURATION		
Size	JP12	JP19
64KB	Open	pins 1 & 2 closed
128KB	pins 1 & 2, 3 & 4 closed	pins 2 & 3 closed
256KB	pins 1 & 2, 3 & 4, 5 & 6 closed	pins 1 & 2 closed

CPU TYPE CONFIGURATION		
Type	JP13	JP20
80486SX	Open	pins 1 & 2 closed
80487SX	pins 1 & 2 closed	pins 2 & 3 closed
80486DX/DX2	pins 2 & 3 closed	pins 2 & 3 closed
Overdrive	pins 1 & 2 closed	pins 2 & 3 closed

CPU SPEED CONFIGURATION		
Speed	JP5	JP10
80486DX-50	pins 1 & 2 closed	Closed
All other CPU speeds	pins 2 & 3 closed	Open