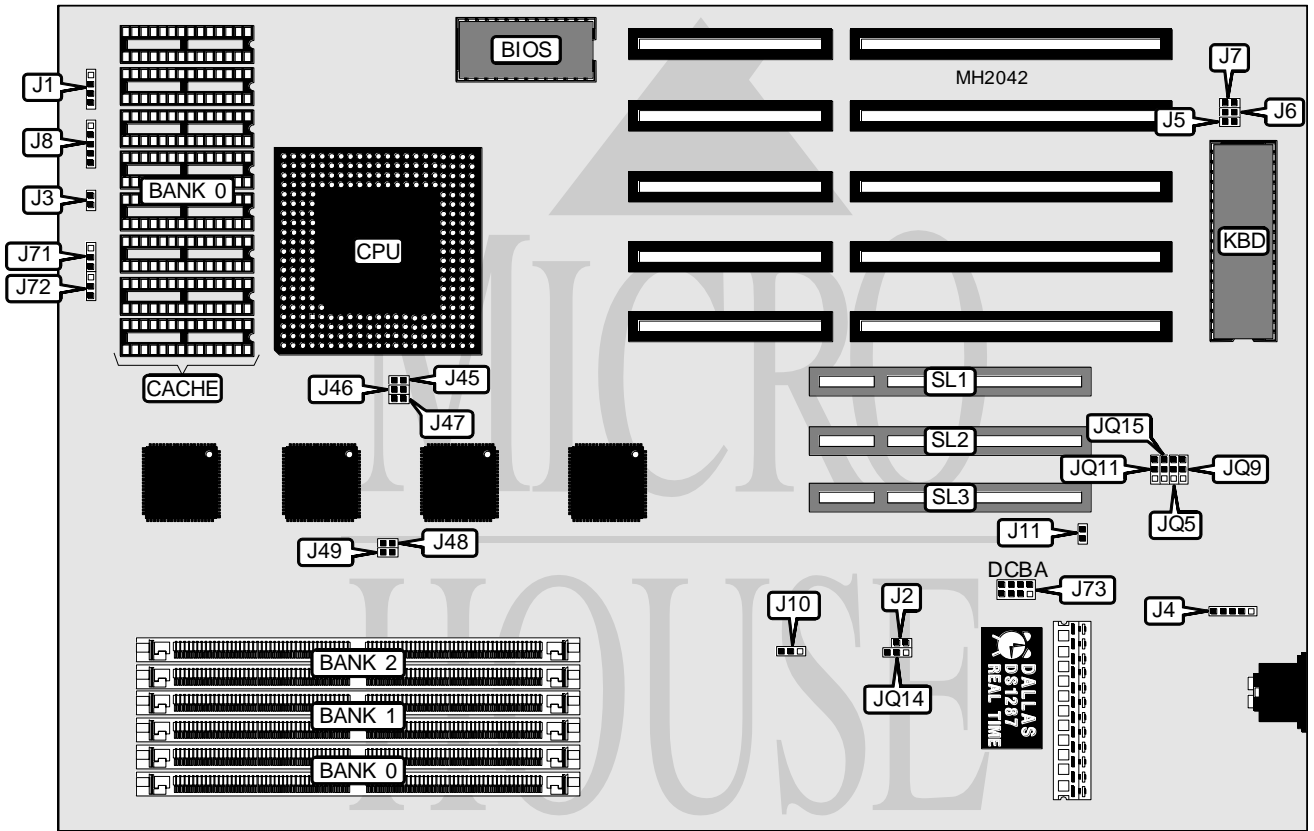


YOUNG MICRO SYSTEMS, INC. VEGA MERCURY PENTIUM PCI

Processor	Pentium
Processor Speed	60/66MHz
Chip Set	Intel
Max. Onboard DRAM	192MB
Cache	256/512KB
BIOS	AMI
Dimensions	330mm x 218mm
I/O Options	32-bit PCI bus slots (3), PS/2 mouse port
NPU Options	None



CONNECTIONS			
Purpose	Location	Purpose	Location
Speaker	J1	Power LED & keylock	J8
Reset switch	J3	32-bit PCI bus	SL1, SL2, SL3
PS/2 mouse connector	J4		

Continued next page...

YOUNG MICRO SYSTEMS, INC.

VEGA MERCURY PENTIUM PCI

... continued from previous page.

USER CONFIGURABLE SETTINGS		
Function	Jumper	Position
í CMOS memory normal operation	J2	Open
CMOS memory clear	J2	Closed
í Factory configured - do not alter	J5	Open
í Factory configured - do not alter	J6	Open
í Factory configured - do not alter	J7	Open
í Flash BIOS write protect enabled	J10	pins 1 & 2 closed
í Flash BIOS write protect disabled	J10	pins 2 & 3 closed
í Flash BIOS programming normal mode	J11	Open
Flash BIOS programming flash EPROM	J11	Closed
í Factory configured - do not alter	J45	Open
í Factory configured - do not alter	J46	Open
í Factory configured - do not alter	J47	Open
í Factory configured - do not alter	J48	Closed
í Factory configured - do not alter	J49	Closed
í Factory configured - do not alter	J72	pins 2 & 3 closed
í Factory configured - do not alter	JQ5	pins 2 & 3 closed
í Factory configured - do not alter	JQ9	pins 2 & 3 closed
í Factory configured - do not alter	JQ11	pins 2 & 3 closed
í PCI IRQ trigger type select inverted	JQ14	pins 1 & 2 closed
PCI IRQ trigger type select standard	JQ14	pins 2 & 3 closed
í Factory configured - do not alter	JQ15	pins 2 & 3 closed

DRAM CONFIGURATION			
Size	Bank 0	Bank 1	Bank 2
1MB	(2) 256K x 36	NONE	NONE
4MB	(2) 256K x 36	(2) 256K x 36	NONE
8MB	(2) 256K x 36	(2) 256K x 36	(2) 256K x 36
16MB	(2) 2M x 36	NONE	NONE
16MB	(2) 1M x 36	(2) 1M x 36	NONE
32MB	(2) 4M x 36	NONE	NONE
32MB	(2) 2M x 36	(1) 2M x 36	NONE
64MB	(2) 8M x 36	NONE	NONE
64MB	(2) 4M x 36	(2) 4M x 36	NONE
128MB	(2) 8M x 36	(2) 8M x 36	NONE
192MB	(2) 8M x 36	(2) 8M x 36	(2) 8M x 36

CACHE CONFIGURATION	
Size	Bank 0
256KB	(8) 32K x 8
512KB	(8) 64K x 8

Continued next page...

YOUNG MICRO SYSTEMS, INC.
VEGA MERCURY PENTIUM PCI

... continued from previous page.

CACHE JUMPER CONFIGURATION	
Size	J71
256KB	pins 1 & 2 closed
512KB	pins 2 & 3 closed

PCI INTERRUPT CONFIGURATION				
Interrupt	J73/A	J73/B	J73/C	J73/D
INT A	Closed	Open	Open	Open
INT B	Open	Closed	Open	Open
INT C	Open	Open	Closed	Open
INT D	Open	Open	Open	Closed