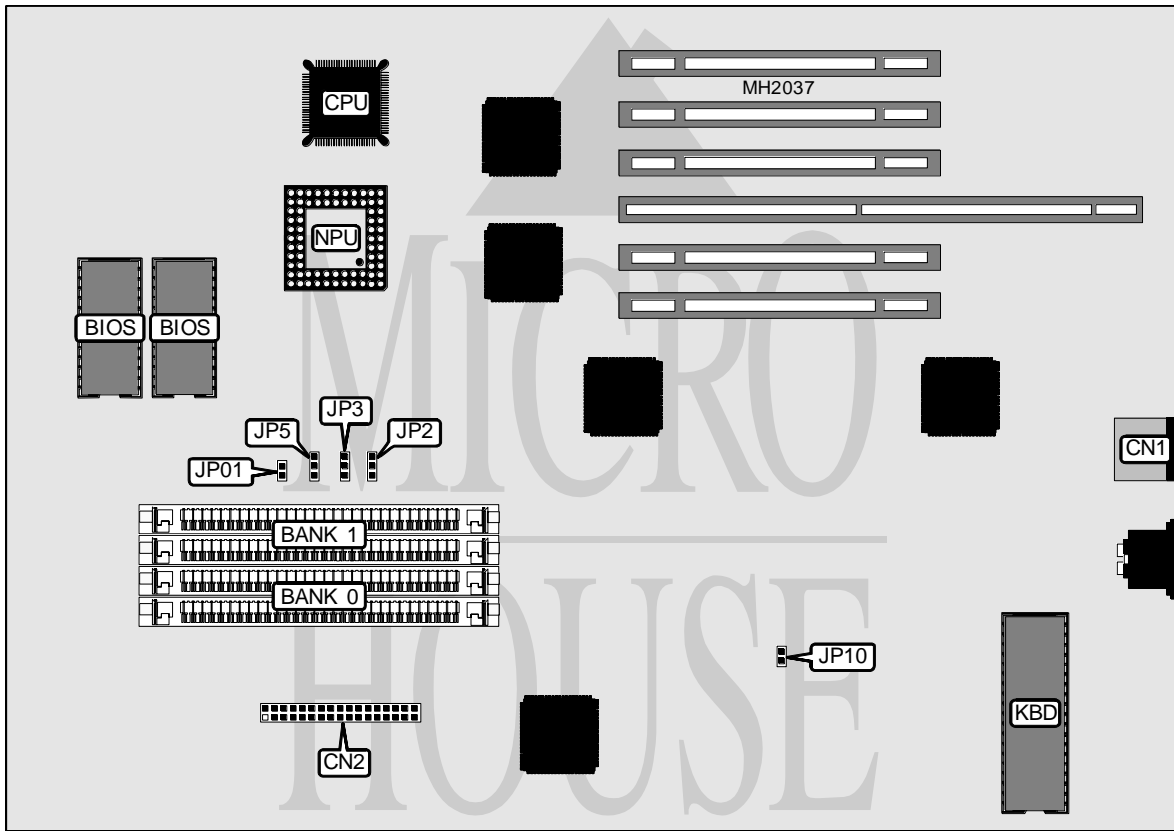


# OLIVETTI P 5 0 0

<b>Processor</b>	80386SX
<b>Processor Speed</b>	16MHz
<b>Chip Set</b>	Texas Instruments
<b>Max. Onboard DRAM</b>	4MB
<b>Cache</b>	None
<b>BIOS</b>	Olivetti
<b>Dimensions</b>	330mm x 218mm
<b>I/O Options</b>	Floppy drive interface
<b>NPU Options</b>	80387SX



CONNECTIONS			
Purpose	Location	Purpose	Location
PS/2 mouse port	CN1	Floppy drive interface	CN2

Continued next page...

# OLIVETTI

## P 5 0 0

... continued from previous page.

USER CONFIGURABLE SETTINGS		
Function	Jumper	Position
í SIMMS installed Bank 0	JP01	Open
SIMMS installed Bank 0 & Bank 1	JP01	Closed
í SIMM type select 1M x 9	JP5	pins 1 & 2 closed
SIMM type select 256K x 9	JP5	pins 2 & 3 closed
í CMOS memory clear	JP10	Open
CMOS memory normal operation	JP10	Closed

DRAM CONFIGURATION		
Size	Bank 0	Bank 1
1MB	(2) 256K x 9	(2) 256K x 9
2MB	(2) 1M x 9	NONE
4MB	(2) 1M x 9	(2) 1M x 9

DRAM JUMPER CONFIGURATION		
Size	JP2	JP3
1MB installed	pins 1 & 2 closed	pins 1 & 2 closed
2MB or 4MB installed	pins 2 & 3 closed	pins 2 & 3 closed