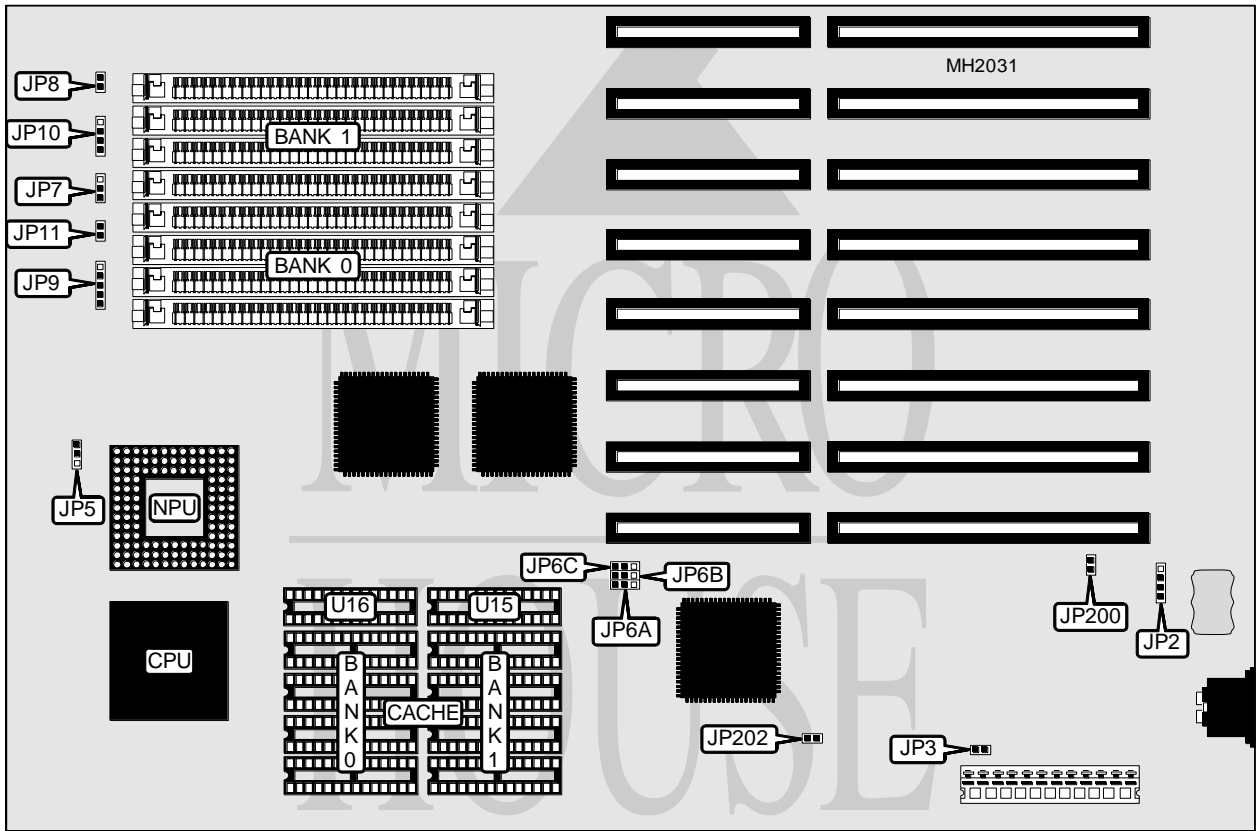


# INFORMTECH INTERNATIONAL, INC.

## IT386SM-P

<b>Processor</b>	80386DX
<b>Processor Speed</b>	33/40MHz
<b>Chip Set</b>	FOREX
<b>Max. Onboard DRAM</b>	32MB
<b>Cache</b>	64/128/256KB
<b>BIOS</b>	AMI
<b>Dimensions</b>	330mm x 218mm
<b>I/O Options</b>	None
<b>NPU Options</b>	80387DX/3167



CONNECTIONS			
Purpose	Location	Purpose	Location
External battery	JP2	Power LED & keylock	JP9
Turbo LED	JP7	Speaker	JP10
Reset switch	JP8	Turbo switch	JP11

Continued next page...

**INFORMTECH INTERNATIONAL, INC.**  
**IT386SM - P**

... continued from previous page.

USER CONFIGURABLE SETTINGS		
Function	Jumper	Position
í Monitor type select monochrome	JP3	Closed
Monitor type select color	JP3	Open
í Factory configured - do not alter	JP5	Open
í Memory parity check enabled	JP101	Closed
Memory parity check disabled	JP101	Open
í Battery type select 3.6V	JP200	Closed
Battery type select 6.0V	JP200	Open
í CMOS memory normal operation	JP202	Open
CMOS memory clear	JP202	Closed

Note: The location of JP101 is unidentified.

DRAM CONFIGURATION		
Size	Bank 0	Bank 1
1MB	(4) 256K x 9	NONE
2MB	(4) 256K x 9	(4) 256K x 9
4MB	(4) 1M x 9	NONE
5MB	(4) 256K x 9	(4) 1M x 9
8MB	(4) 1M x 9	(4) 1M x 9
16MB	(4) 4M x 9	NONE
20MB	(4) 1M x 9	(4) 4M x 9
32MB	(4) 4M x 9	(4) 4M x 9

CACHE CONFIGURATION				
Size	Bank 0	Bank 1	TAG (U15)	TAG (U16)
64KB	(4) 8K x 8	(4) 8K x 8	NONE	(1) 8K x 8
128KB	(4) 32K x 8	NONE	NONE	(1) 8K x 8
256KB	(4) 32K x 8	(4) 32K x 8	(1) 8K x 8	(1) 8K x 8

CACHE JUMPER CONFIGURATION			
Size	JP6A	JP6B	JP6C
64KB	pins 2 & 3 closed	pins 1 & 2 closed	pins 1 & 2 closed
128KB	pins 1 & 2 closed	pins 1 & 2 closed	pins 1 & 2 closed
256KB	pins 1 & 2 closed	pins 2 & 3 closed	pins 2 & 3 closed