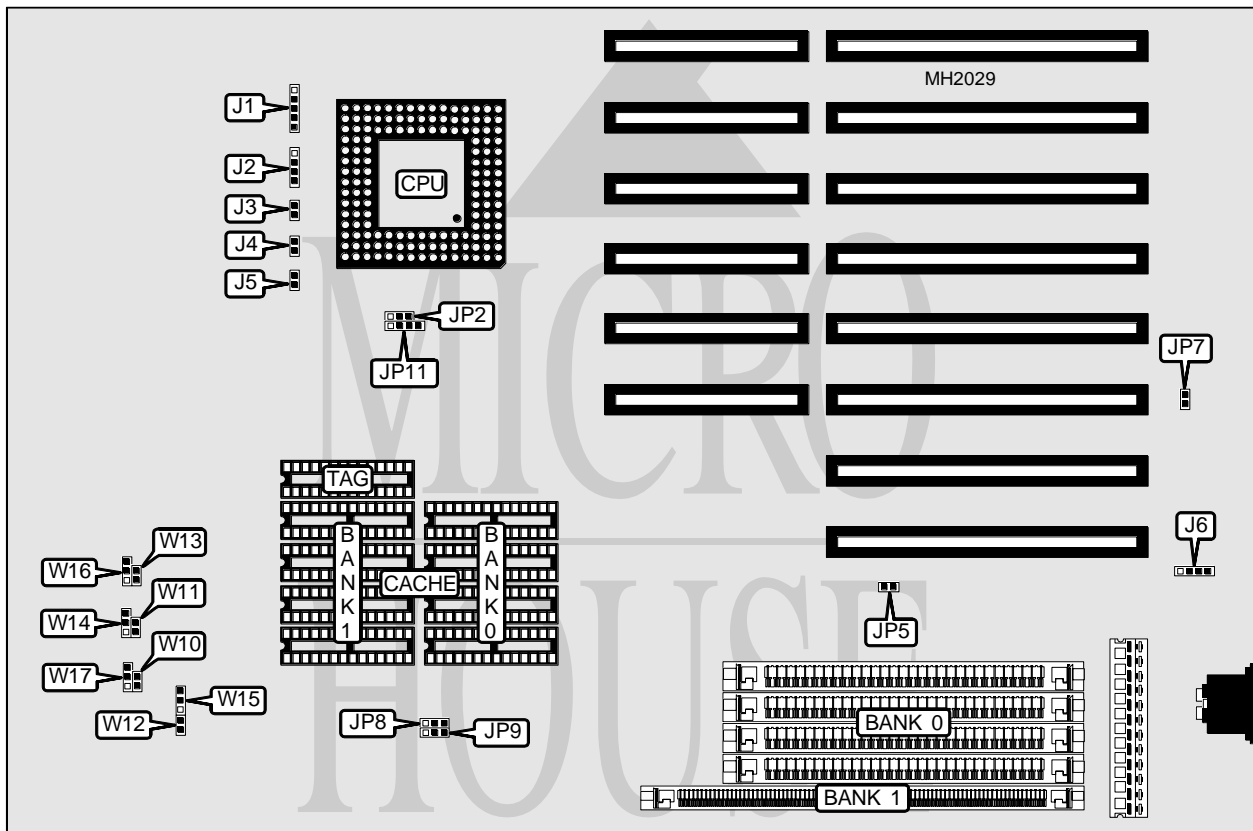


# RELIALOGIC CORPORATION PRIVATE, LTD.

## R486DX 33 MIBBC

<b>Processor</b>	80486SX/80487SX/80486DX/80486DX2
<b>Processor Speed</b>	25/33/50(internal)/66(internal)MHz
<b>Chip Set</b>	UMC
<b>Max. Onboard DRAM</b>	32MB
<b>Cache</b>	64/128/256KB
<b>BIOS</b>	AMI
<b>Dimensions</b>	330mm x 218mm
<b>I/O Options</b>	None
<b>NPU Options</b>	None



CONNECTIONS			
Purpose	Location	Purpose	Location
Power LED & keylock	J1	Turbo switch	J4
Speaker	J2	Reset switch	J5
Turbo LED	J3	External battery	J6

Continued next page...

# RELIALOGIC CORPORATION PRIVATE, LTD.

## R486DX 33 MIBBC

... continued from previous page.

USER CONFIGURABLE SETTINGS		
Function	Jumper	Position
í Monitor type select CGA	JP5	Closed
Monitor type select monochrome EGA/VGA	JP5	Open
í Battery type select internal	JP7	Closed
Battery type select external	JP7	Open
í Factory configured - do not alter	JP8	Open
í Factory configured - do not alter	JP9	pins 1 & 2 closed

DRAM CONFIGURATION		
Size	Bank 0	Bank 1
1MB	(4) 256K x 9	NONE
2MB	(4) 256K x 9	(1) 256K x 36
4MB	(4) 1M x 9	NONE
5MB	(4) 256K x 9	(1) 1M x 36
8MB	(4) 1M x 9	(1) 1M x 36
16MB	(4) 4M x 9	NONE
20MB	(4) 1M x 9	(1) 4M x 36
32MB	(4) 4M x 9	(1) 4M x 36

CACHE CONFIGURATION			
Size	Bank 0	Bank 1	TAG
64KB	(4) 8K x 8	(4) 8K x 8	(2) 16K x 4
128KB	(4) 32K x 8	NONE	(2) 16K x 4
256KB	(4) 32K x 8	(4) 32K x 8	(2) 16K x 4

CACHE JUMPER CONFIGURATION								
Size	W10	W11	W12	W13	W14	W15	W16	W17
64KB	Open	Open	Open	Open	1 & 2	1 & 2	1 & 2	Open
128KB	Closed	Open	Closed	Open	1 & 2	1 & 2	2 & 3	1 & 2
256KB	Closed	Closed	Closed	Closed	2 & 3	2 & 3	1 & 2	2 & 3
Note: Pins designated should be in the closed position.								

CPU TYPE CONFIGURATION		
Type	JP2	JP11
80486SX	Open	pins 2 & 3 closed
80487SX	pins 1 & 2 closed	pins 1 & 2, 3 & 4 closed
80486DX/DX2	pins 2 & 3 closed	pins 1 & 2, 3 & 4 closed