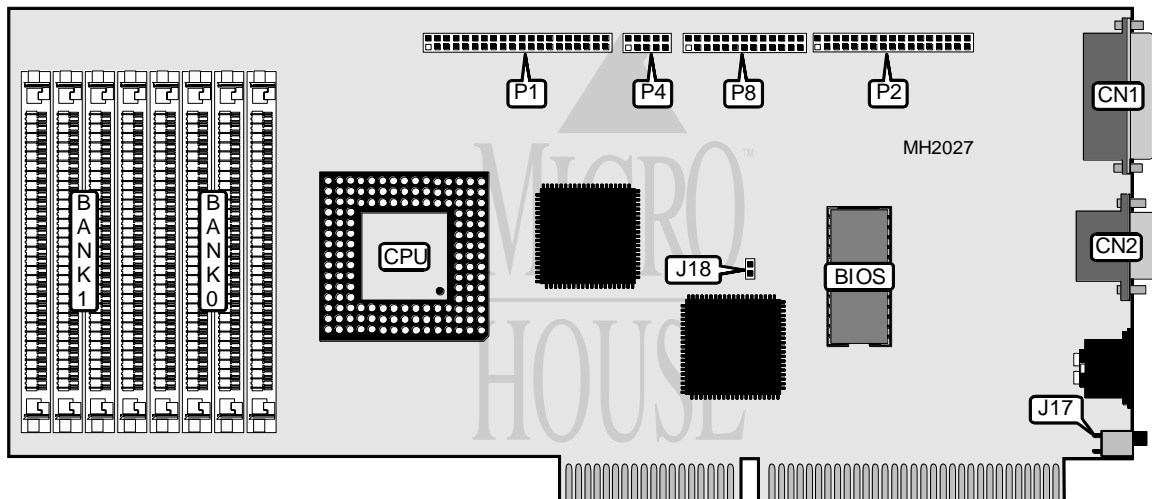


# MULTI-TECH SYSTEMS, INC.

## MT-486SX/DX

<b>Processor</b>	80486SX/80486DX
<b>Processor Speed</b>	33MHz
<b>Chip Set</b>	UMC
<b>Max. Onboard DRAM</b>	32MB
<b>Cache</b>	None
<b>BIOS</b>	Phoenix
<b>Dimensions</b>	105mm x 34mm
<b>I/O Options</b>	Floppy drive interface, IDE interface, parallel port, serial ports (2), VGA port
<b>NPU Options</b>	None



### CONNECTIONS

Purpose	Location	Purpose	Location
VGA port	CN1	Floppy drive interface	P2
Serial port 1	CN2	Serial port 2	P4
Reset switch	J17	Parallel port	P8
IDE interface	P1		

### USER CONFIGURABLE SETTINGS

Function	Jumper	Position
Flash BIOS write protect enabled	J18	Closed
Flash BIOS write protect disabled	J18	Open

### DRAM CONFIGURATION

Size	Bank 0	Bank 1
4MB	(4) 1M x 9	NONE
8MB	(4) 1M x 9	(4) 1M x 9
16MB	(4) 4M x 9	NONE
20MB	(4) 4M x 9	(4) 1M x 9
32MB	(4) 4M x 9	(4) 4M x 9