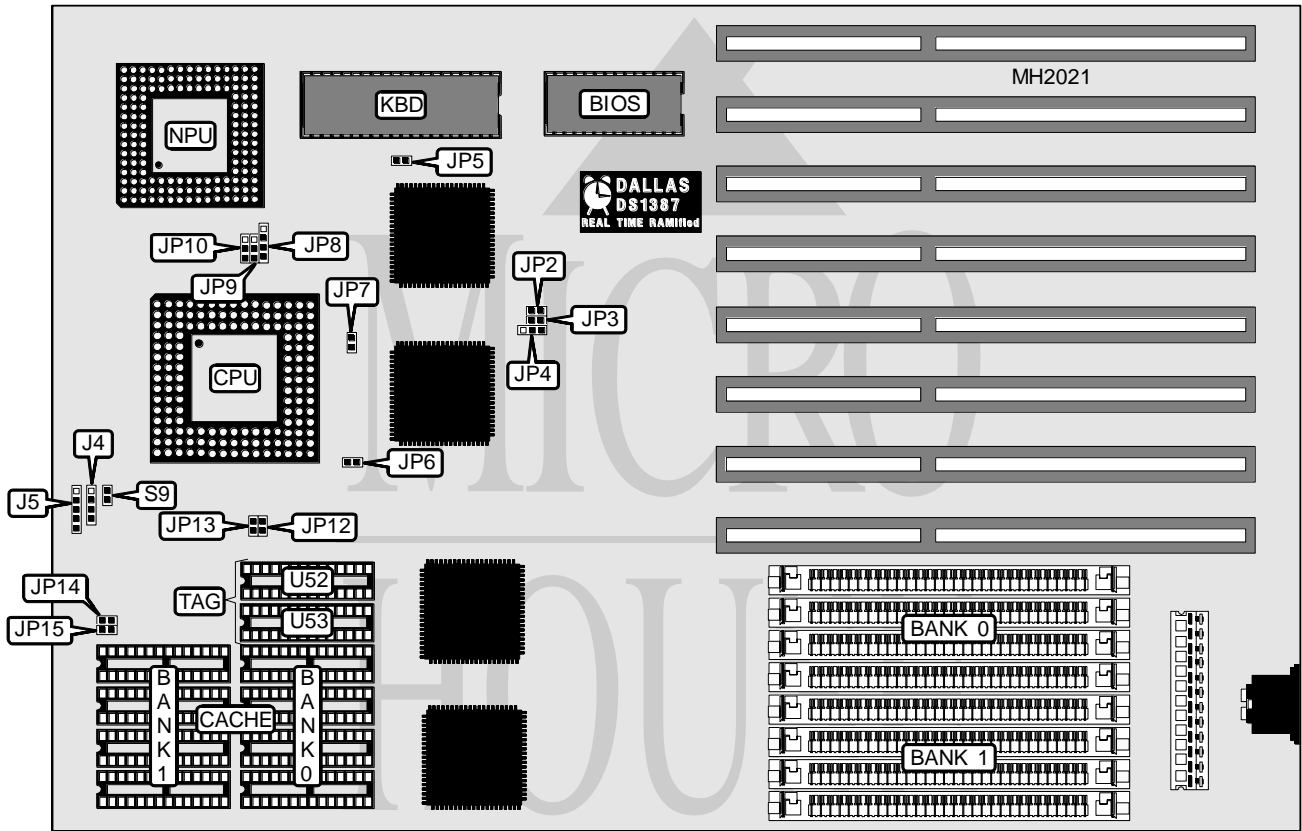


# INFORMTECH INTERNATIONAL, INC.

## IT486EL

<b>Processor</b>	80486SX/80487SX/80486DX/80486DX2
<b>Processor Speed</b>	20/25/33/40/50(internal)/50/66(internal)MHz
<b>Chip Set</b>	UMC
<b>Max. Onboard DRAM</b>	128MB
<b>Cache</b>	64/128/256KB
<b>BIOS</b>	Phoenix
<b>Dimensions</b>	330mm x 218mm
<b>I/O Options</b>	None
<b>NPU Options</b>	4167



CONNECTIONS			
Purpose	Location	Purpose	Location
Speaker	J4	Reset switch	S9
Power LED & keylock	J5		

USER CONFIGURABLE SETTINGS			
Function	Jumper	Position	
í Monitor type select monochrome	JP5	Open	
Monitor type select color	JP5	Closed	
í Factory configured - do not alter	JP6	Open	

Continued next page...

**INFORMTECH INTERNATIONAL, INC.**  
**IT486EL**

.. continued from previous page.

DRAM CONFIGURATION		
Size	Bank 0	Bank 1
4MB	(4) 1M x 9	NONE
8MB	(4) 1M x 9	(4) 1M x 9
16MB	(4) 1M x 9	(4) 1M x 9
20MB	(4) 1M x 9	(4) 4M x 9
32MB	(4) 4M x 9	(4) 4M x 9
64MB	(4) 16M x 9	NONE
128MB	(4) 16M x 9	(4) 16M x 9

CACHE CONFIGURATION				
Size	Bank 0	Bank 1	TAG (U52)	TAG (U53)
64KB	(4) 8K x 8	(4) 8K x 8	(2) 8K x 8	NONE
128KB	(4) 32K x 8	NONE	(2) 8K x 8	NONE
256KB	(4) 32K x 8	(4) 32K x 8	(2) 8K x 8	(2) 8K x 8

CACHE JUMPER CONFIGURATION				
Size	JP12	JP13	JP14	JP15
64KB	Open	Open	Open	Open
128KB	Open	Closed	Open	Closed
256KB	Closed	Closed	Closed	Closed

CPU TYPE CONFIGURATION		
CPU Type	JP8	JP10
80486SX	pins 2 & 3 closed	Open
80487SX	pins 1, 2, 3, & 4 closed	pins 1 & 2 closed
80486DX/DX2	pins 1, 2, 3, & 4 closed	pins 2 & 3 closed

CPU SPEED CONFIGURATION					
CPU speed	JP2	JP3	JP4	JP7	JP9
20MHz	Open	Closed	1 & 2	Open	2 & 3
25MHz	Open	Open	1 & 2	Open	2 & 3
33MHz	Closed	Open	1 & 2	Open	2 & 3
40MHz	Open	Open	2 & 3	Closed	2 & 3
50iMHz	Open	Open	1 & 2	Open	2 & 3
50MHz	Closed	Open	1 & 2	Open	1 & 2
66iMHz	Closed	Open	1 & 2	Open	2 & 3

Note: Pins designated should be in the closed position.