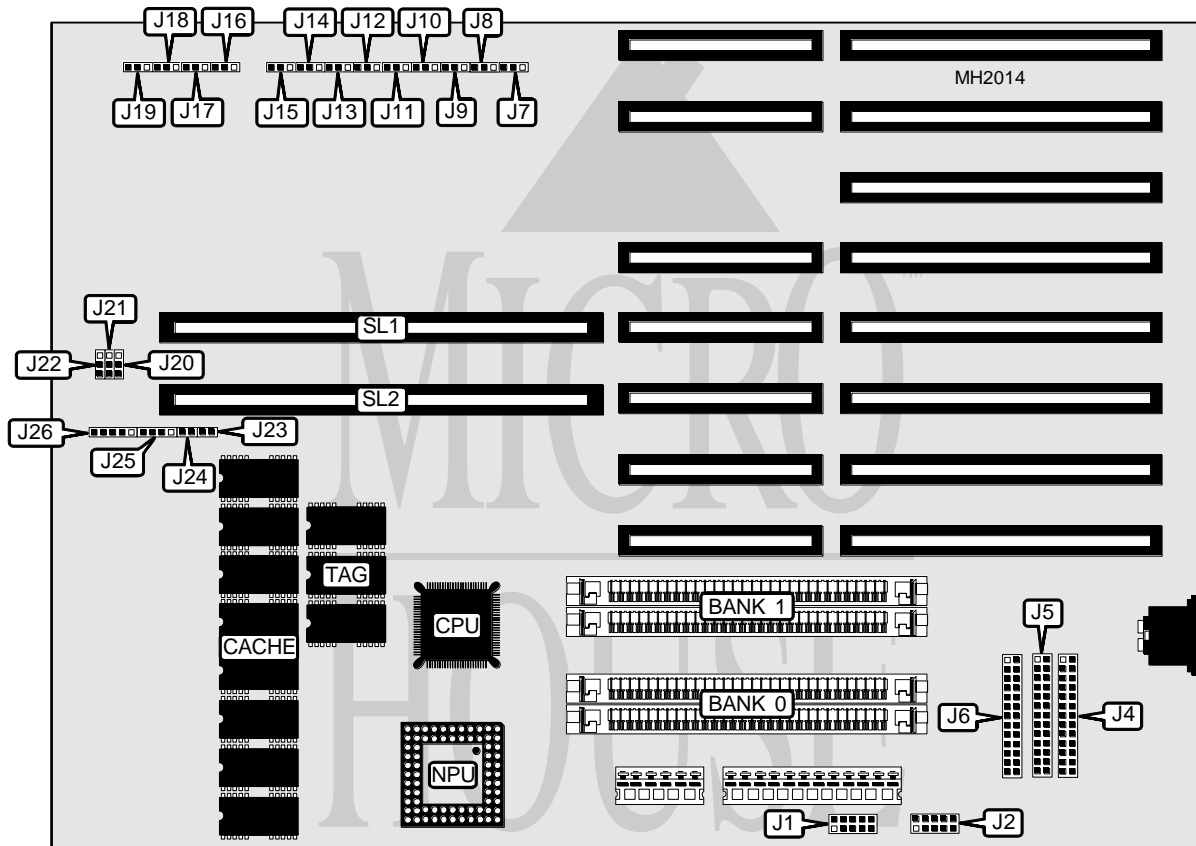


SAMSUNG ELECTRONICS AMERICA, INC.

SD 8 2 0

Processor	80386SX
Processor Speed	25MHz
Chip Set	Unidentified
Max. Onboard DRAM	8MB
Cache	64KB
BIOS	Phoenix
Dimensions	330mm x 218mm
I/O Options	32-bit external memory slots (2)
NPU Options	80387SX/3167



CONNECTIONS			
Purpose	Location	Purpose	Location
Serial port 1	J1	Reset switch	J24
Serial port 2	J2	Speaker	J25
Parallel port	J4	Front panel connector	J26
Serial port header	J5	32-bit external memory card slots	SL1 & SL2
Serial port header	J6		

Continued next page...

SAMSUNG ELECTRONICS AMERICA, INC.

SD 820

... continued from previous page.

USER CONFIGURABLE SETTINGS		
Function	Jumper	Position
í Printer acknowledge type select trailing edge	J7	pins 2 & 3 closed
Printer acknowledge type select leading edge	J7	pins 1 & 2 closed
í Parallel printer port enabled (LPT 1)	J8	pins 1 & 2 closed
Parallel printer port disabled (LPT 1)	J8	pins 2 & 3 closed
í Parallel printer port disabled (LPT 2)	J9	pins 2 & 3 closed
Parallel printer port enabled (LPT 2)	J9	pins 1 & 2 closed
í Serial port enabled (COM 1 & COM 2)	J10 & J11	pins 1 & 2 closed
Serial port disabled (COM 1 & COM 2)	J10 & J11	pins 2 & 3 closed
í Monitor type select color	J12	pins 2 & 3 closed
Monitor type select monochrome	J12	pins 1 & 2 closed
í Factory configured - do not alter	J13	Open
í ROM size select 64K	J14	pins 1 & 2 closed
ROM size select 128K	J14	pins 2 & 3 closed
í Factory configured - do not alter	J15	Open
í DRAM speed select 100 ns	J22	pins 1 & 2 closed
DRAM speed select 85 ns	J22	pins 2 & 3 closed
í Factory configured - do not alter	J23	Open

DRAM CONFIGURATION		
Size	Bank 0	Bank 1
1MB	(4) 256K x 9	NONE
2MB	(4) 256K x 9	(4) 256K x 9
4MB	(4) 1M x 9	NONE
8MB	(4) 1M x 9	(4) 1M x 9

DRAM JUMPER CONFIGURATION				
Size	J16	J17	J18	J19
1MB	pins 2 & 3 closed	pins 2 & 3 closed	pins 2 & 3 closed	pins 2 & 3 closed
2MB	pins 2 & 3 closed	pins 1 & 2 closed	pins 1 & 2 closed	pins 2 & 3 closed
4MB	pins 1 & 2 closed	pins 2 & 3 closed	pins 2 & 3 closed	pins 1 & 2 closed
8MB	pins 1 & 2 closed	pins 1 & 2 closed	pins 2 & 3 closed	pins 1 & 2 closed

DRAM TYPE CONFIGURATION		
Type	J20	J21
Static column	pins 2 & 3 closed	pins 1 & 2 closed
Fast page mode	pins 2 & 3 closed	pins 2 & 3 closed
Standard RAS/CAS	pins 1 & 2 closed	pins 1 & 2 closed