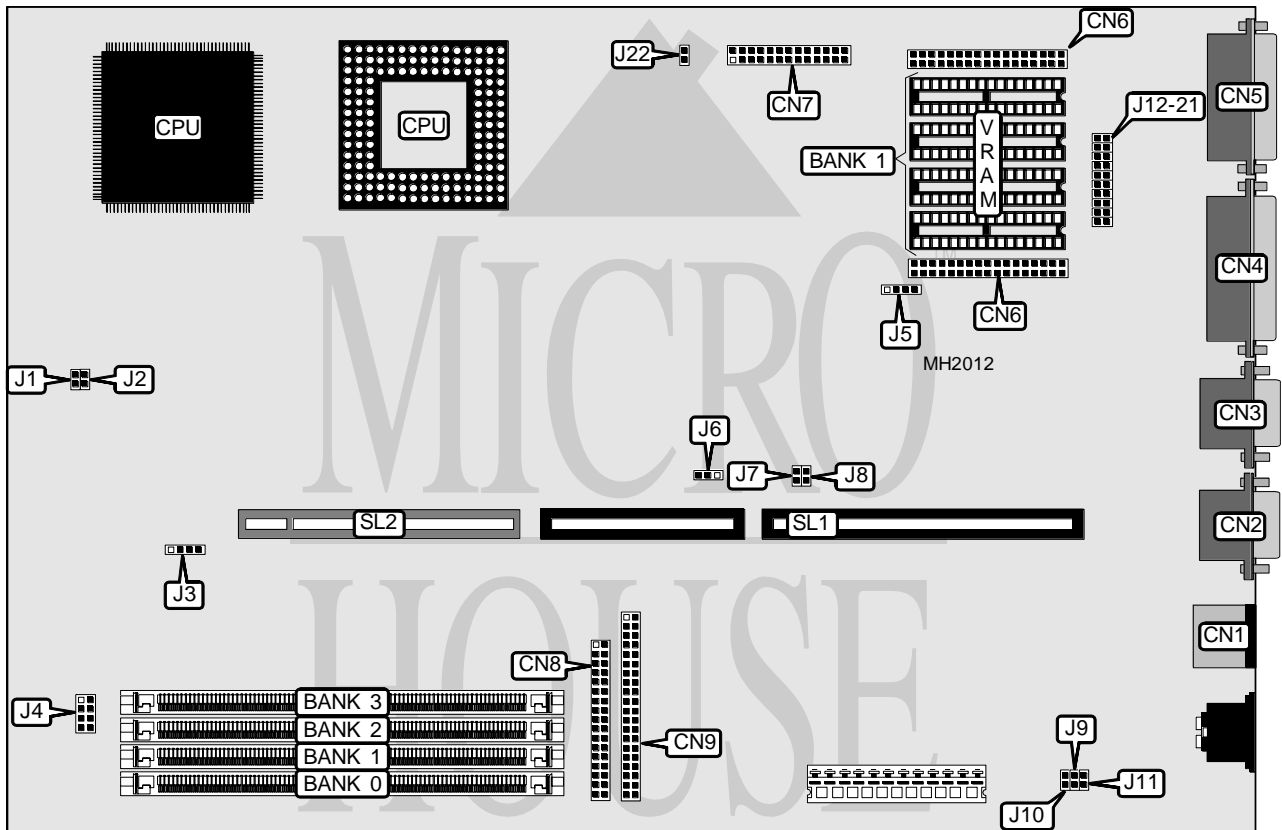


DELL COMPUTER CORPORATION SYSTEMS 4XX/L(V), 4XX/MX(V) OPTIPLEX

Processor	80486SX/80486DX/80486DX2
Processor Speed	25/33/50(internal)/66(internal)MHz
Chip Set	Headland
Max. Onboard DRAM	64MB
Cache	128KB (on external cache card)
BIOS	Unidentified
Dimensions	330mm x 218mm
I/O Options	32-bit external cache card, 32-bit VESA local bus slot, floppy drive interface, IDE interface, parallel port, PS/2 mouse port, serial ports (2), VGA feature connector, VGA port
NPU Options	None



CONNECTIONS			
Purpose	Location	Purpose	Location
PS/2 mouse port	CN1	Floppy drive interface	CN8
Serial port 1	CN2	IDE interface	CN9
Serial port 2	CN3	External battery	J3
Parallel port	CN4	Control panel connector	J4
VGA port	CN5	IDE interface LED	J5
Video memory upgrade module	CN6	Riser Card	SL1
VGA feature connector	CN7	32-bit VESA Local bus/cache slot	SL2

Continued next page...

DELL COMPUTER CORPORATION SYSTEMS 4XX/L(V), 4XX/MX(V) OPTIPLEX

... continued from previous page.

USER CONFIGURABLE SETTINGS		
Function	Jumper	Position
í VESA riser card disabled	J1 & J2	Closed
VESA riser card enabled	J1 & J2	Open
í IDE IRQ enabled	J6	pins 2 & 3 closed
IDE IRQ disabled	J6	pins 1 & 2 closed
í Factory configured - do not alter	J7	Open
í PS/2 mouse (IRQ12) enabled	J8	Closed
PS/2 mouse (IRQ12) disabled	J8	Open
í Factory configured - do not alter	J9	Open
í Factory configured - do not alter	J10	Open
í Flash BIOS write protect disabled	J11	Closed
Flash BIOS write protect enabled	J11	Open
í CPU type select PGA	J12	Closed
CPU type select PQFP	J12	Open
í CMOS memory normal operation	J13	Closed
CMOS memory clear	J13	Open
í I/O controller address select 26Eh-26Fh	J14	Closed
I/O controller address select 398h-399h	J14	Open
í Factory configured - do not alter	J15	Open
í On board VGA enabled	J16	Closed
On board VGA disabled	J16	Open
í Factory configured - do not alter	J17	Open
í Factory configured - do not alter	J18	Open
í Factory configured - do not alter	J20	Open
í Factory configured - do not alter	J22	Open

DRAM CONFIGURATION				
Size	Bank 0	Bank 1	Bank 2	Bank 3
4MB	(1) 1M x 36	NONE	NONE	NONE
8MB	(1) 1M x 36	(1) 1M x 36	NONE	NONE
12MB	(1) 1M x 36	(1) 1M x 36	(1) 1M x 36	NONE
16MB	(1) 1M x 36	(1) 1M x 36	(1) 1M x 36	(1) 1M x 36
16MB	(1) 4M x 36	NONE	NONE	NONE
20MB	(1) 4M x 36	(1) 1M x 36	NONE	NONE
24MB	(1) 4M x 36	(1) 1M x 36	(1) 1M x 36	NONE
28MB	(1) 4M x 36	(1) 1M x 36	(1) 1M x 36	(1) 1M x 36
32MB	(1) 4M x 36	(1) 4M x 36	NONE	NONE
36MB	(1) 4M x 36	(1) 4M x 36	(1) 1M x 36	NONE
40MB	(1) 4M x 36	(1) 4M x 36	(1) 1M x 36	(1) 1M x 36
48MB	(1) 4M x 36	(1) 4M x 36	(1) 4M x 36	NONE
52MB	(1) 4M x 36	(1) 4M x 36	(1) 4M x 36	(1) 1M x 36
64MB	(1) 4M x 36	(1) 4M x 36	(1) 4M x 36	(1) 4M x 36

Continued next page...

DELL COMPUTER CORPORATION SYSTEMS 4XX/L(V), 4XX/MX(V) OPTIPLEX

... continued from previous page.

VESA CPU SPEED CONFIGURATION		
Speed	J19	J21
25MHz	Open	Closed
33MHz	Closed	Open
50iMHz	Open	Closed
66iMHz	Closed	Open

VIDEO MEMORY CONFIGURATION			
Size	Bank 0	Bank 1	CN6
512KB	(4) 128K x 8	NONE	NONE
1MB	(4) 128K x 8	(4) 128K x 8	NONE
2MB	(4) 128K x 8	(4) 128K x 8	Memory module
Note: Bank 0 is factory installed and is not configurable. To enable 2MB video memory, install memory module over Bank 1 in CN6 connectors.			