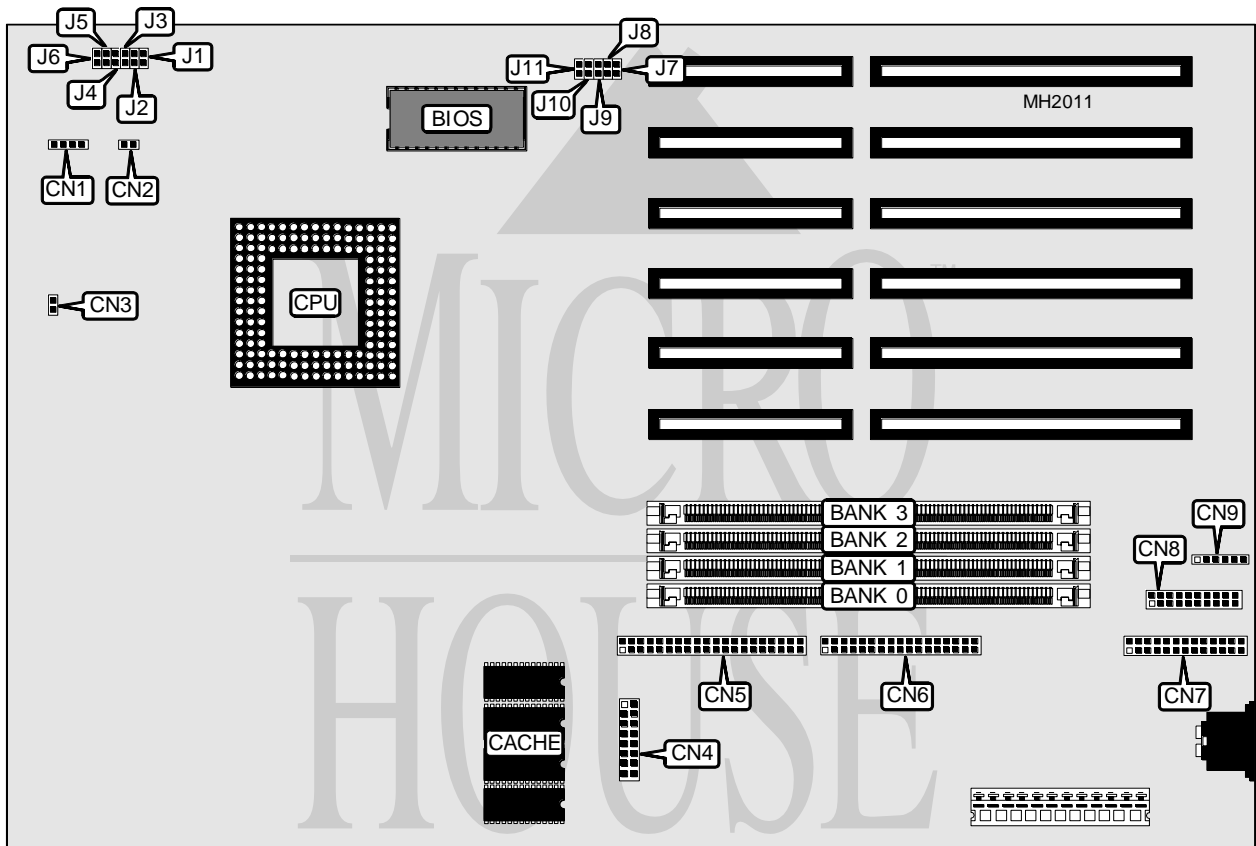


# DELL COMPUTER CORPORATION SYSTEM V486/50/66 FS

<b>Processor</b>	80486DX2
<b>Processor Speed</b>	50(internal)/66(internal)MHz
<b>Chip Set</b>	LSI
<b>Max. Onboard DRAM</b>	64MB
<b>Cache</b>	128KB
<b>BIOS</b>	Unidentified
<b>Dimensions</b>	330mm x 218mm
<b>I/O Options</b>	Floppy drive interface, IDE interface, parallel interface, PS/2 mouse interface, serial ports (2), VGA feature connector
<b>NPU Options</b>	None



CONNECTIONS			
Purpose	Location	Purpose	Location
External battery	CN1	Floppy drive interface	CN6
IDE interface LED	CN2	Parallel port	CN7
Chassis fan power	CN3	Serial port	CN8
VGA feature connector	CN4	PS/2 mouse interface	CN9
IDE interface	CN5		

Continued next page...

# DELL COMPUTER CORPORATION SYSTEM V486/50/66 FS

... continued from previous page.

USER CONFIGURABLE SETTINGS		
Function	Jumper	Position
í Mouse connector enabled ( uses IRQ12)	J1	Closed
Mouse connector disabled	J1	Open
í I/O address select (26Eh-26Fh)	J2	Closed
I/O address select (398h-399h)	J2	Open
í Factory configured - do not alter	J3	Open
í Factory configured - do not alter	J4	Closed
í CMOS memory normal operation	J5	Closed
CMOS memory clear	J5	Open
í Internal VGA enabled	J6	Closed
Internal VGA disabled	J6	Open
í Factory configured - do not alter	J7	Open
í Factory configured - do not alter	J8	Open
í Factory configured - do not alter	J11	Open

DRAM CONFIGURATION				
Size	Bank 0	Bank 1	Bank 2	Bank 3
4MB	(1) 1M x 36	NONE	NONE	NONE
8MB	(1) 1M x 36	(1) 1M x 36	NONE	NONE
12MB	(1) 1M x 36	(1) 1M x 36	(1) 1M x 36	NONE
16MB	(1) 1M x 36	(1) 1M x 36	(1) 1M x 36	(1) 1M x 36
16MB	(1) 4M x 36	NONE	NONE	NONE
20MB	(1) 1M x 36	(1) 4M x 36	NONE	NONE
24MB	(1) 1M x 36	(1) 1M x 36	(1) 4M x 36	NONE
28MB	(1) 1M x 36	(1) 1M x 36	(1) 1M x 36	(1) 4M x 36
32MB	(1) 4M x 36	(1) 4M x 36	NONE	NONE
36MB	(1) 1M x 36	(1) 4M x 36	(1) 4M x 36	NONE
40MB	(1) 1M x 36	(1) 1M x 36	(1) 4M x 36	(1) 4M x 36
48MB	(1) 4M x 36	(1) 4M x 36	(1) 4M x 36	NONE
52MB	(1) 1M x 36	(1) 4M x 36	(1) 4M x 36	(1) 4M x 36
64MB	(1) 4M x 36	(1) 4M x 36	(1) 4M x 36	(1) 4M x 36

CPU SPEED CONFIGURATION		
Size	J9	J10
25MHz	Closed	Open
33MHz	Open	Closed
50iMHz	Closed	Open
66iMHz	Open	Closed