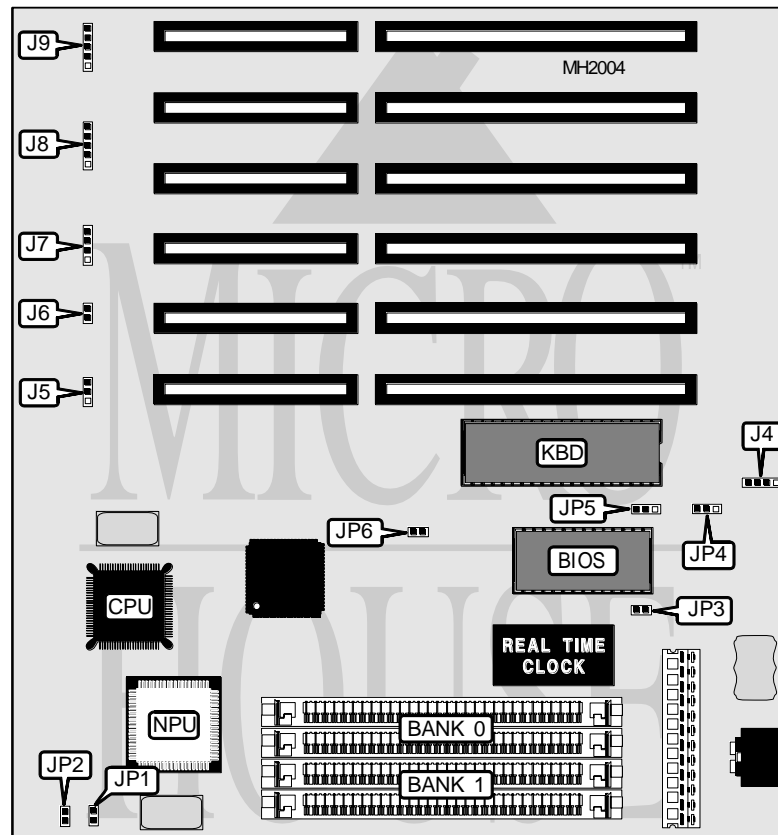


SILICON VALLEY COMPUTER, INC. MINI386SX

Processor	80386SX
Processor Speed	16/20/25/33MHz
Chip Set	ALI
Max. Onboard DRAM	16MB
Cache	None
BIOS	Unidentified
Dimensions	220mm X 240mm
I/O Options	None
NPU Options	80387SX



CONNECTIONS			
Purpose	Location	Purpose	Location
External battery	J4	Turbo switch & LED	J8
Reset switch	J6	Keylock and Power LED	J9
Speaker	J7		

Continued next page...

SILICON VALLEY COMPUTER, INC.

MINI386SX

... continued from previous page.

USER CONFIGURABLE SETTINGS		
Function	Jumper	Position
í Factory configured - do not alter	J5	N/A
í NPU synchronous with CPU	JP2	pins 1 & 2 closed
NPU asynchronous with CPU	JP2	pins 2 & 3 closed
Real time clock type select 1287	JP3	Closed
Real time clock type select 146818	JP3	Open
í Monitor type select monochrome	JP4	pins 1 & 2 closed
Monitor type select color	JP4	pins 2 & 3 closed
í Parity disabled	JP6	Closed
Parity enabled	JP6	Open

DRAM CONFIGURATION		
Size	Bank 0	Bank 1
512K	(2) 256K x 9	NONE
1M	(2) 256K x 9	(2) 256K x 9
2M	(2) 1M x 9	NONE
4M	(2) 1M x 9	(2) 1M x 9
8M	(2) 4M x 9	NONE
16M	(2) 4M x 9	(2) 4M x 9

CPU SPEED CONFIGURATION	
AT clock	JP1
16MHz	pins 1 & 2 closed
20MHz	pins 2 & 3 closed
25MHz	pins 1 & 2 closed
33MHz	pins 2 & 3 closed

ADS DELAY CONFIGURATION	
Speed	JP5
16MHz	pins 1 & 2 closed
20MHz	pins 1 & 2 closed
25MHz	pins 2 & 3 closed
33MHz	pins 2 & 3 closed