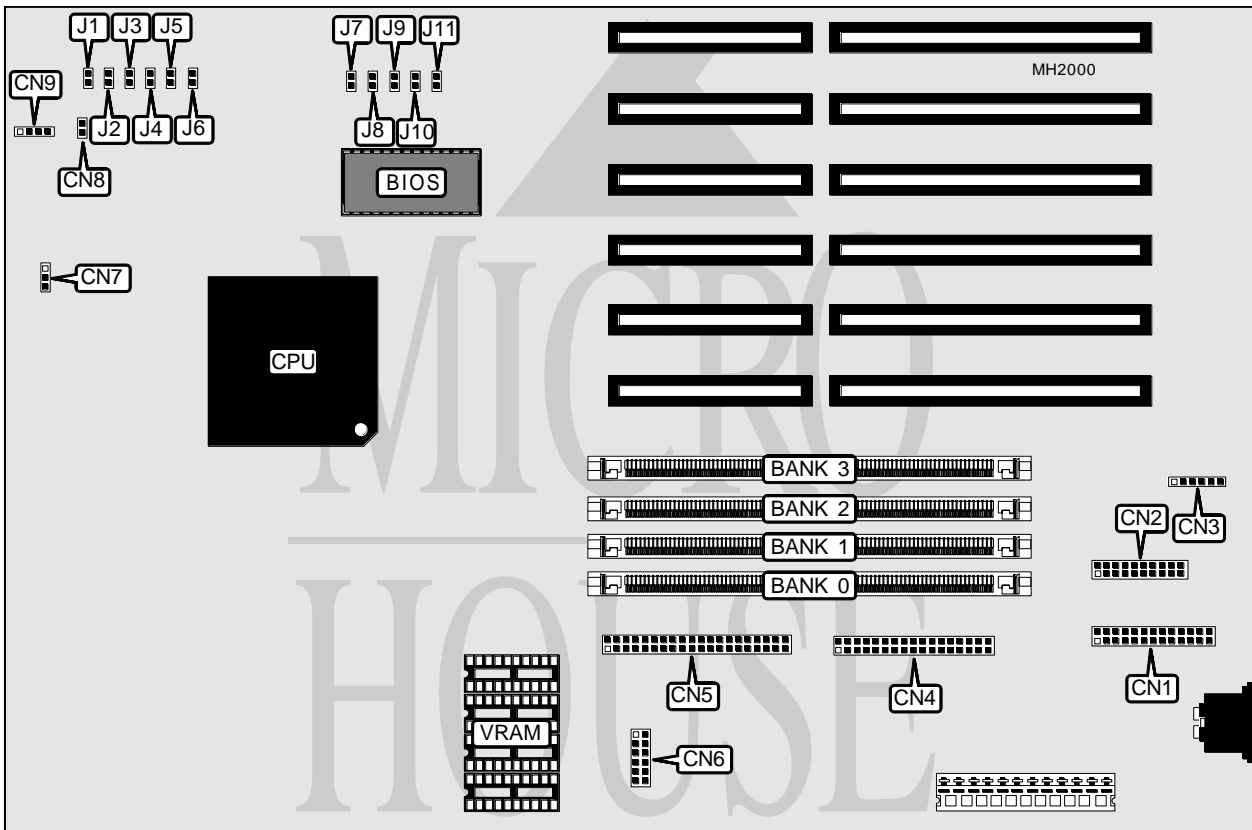


# DELL COMPUTER CORPORATION SYSTEM V486/XX SDT REV. 3

<b>Processor</b>	80486SX/80486DX/80486DX2
<b>Processor Speed</b>	25/33/50(internal)/66(internal)MHz
<b>Chip Set</b>	LSI
<b>Max. Onboard DRAM</b>	64MB
<b>Cache</b>	None
<b>BIOS</b>	Unidentified
<b>Dimensions</b>	330mm x 218mm
<b>I/O Options</b>	Floppy drive interface, IDE interface, parallel port, PS/2 mouse port, serial ports (2), VGA port
<b>NPU Options</b>	None



CONNECTIONS			
Purpose	Location	Purpose	Location
Parallel port connector	CN1	IDE interface	CN5
Serial port 1	CN2	VGA connector	CN6
Serial port 2	CN2	Fan connector	CN7
PS/2 mouse port	CN3	IDE interface LED	CN8
Floppy drive interface	CN4	External battery connector	CN9

Continued next page...

# DELL COMPUTER CORPORATION

## SYSTEM V486/XX SDT REV. 3

... continued from previous page.

USER CONFIGURABLE SETTINGS		
Function	Jumper	Position
í Mouse connector enabled at IRQ12	J1	Closed
Mouse connector disabled	J1	Open
í I/O address is 26Eh-26Fh	J2	Closed
I/O address is 398h-399h	J2	Open
í Factory configured do not alter	J3	Open
í Factory configured do not alter	J4	Closed
í Enables password feature	J5	Closed
Disables password feature	J5	Closed
í Enables on-board VGA controller	J6	Closed
Disables on-board VGA controller	J6	Open
í Factory configured do not alter	J7	Open
í Factory configured do not alter	J10	Open
í Factory configured do not alter	J11	Open

DRAM CONFIGURATION				
Size	Bank 0	Bank 1	Bank 2	Bank 3
4MB	(1) 1M x 36	NONE	NONE	NONE
8MB	(1) 1M x 36	(1) 1M x 36	NONE	NONE
12MB	(1) 1M x 36	(1) 1M x 36	(1) 1M x 36	NONE
16MB	(1) 1M x 36	(1) 1M x 36	(1) 1M x 36	(1) 1M x 36
16MB	(1) 4M x 36	NONE	NONE	NONE
20MB	(1) 4M x 36	(1) 1M x 36	NONE	NONE
24MB	(1) 4M x 36	(1) 1M x 36	(1) 1M x 36	NONE
28MB	(1) 4M x 36	(1) 1M x 36	(1) 1M x 36	(1) 1M x 36
32MB	(1) 4M x 36	(1) 4M x 36	NONE	NONE
36MB	(1) 4M x 36	(1) 4M x 36	(1) 1M x 36	NONE
40MB	(1) 4M x 36	(1) 4M x 36	(1) 1M x 36	(1) 1M x 36
48MB	(1) 4M x 36	(1) 4M x 36	(1) 4M x 36	NONE
52MB	(1) 4M x 36	(1) 4M x 36	(1) 4M x 36	(1) 1M x 36
64MB	(1) 4M x 36	(1) 4M x 36	(1) 4M x 36	(1) 4M x 36

CPU SPEED CONFIGURATION		
Speed	J8	J9
25MHz	Open	Closed
33MHz	Closed	Open
50iMHz	Open	Closed
66iMHz	Closed	Open

VRAM CONFIGURATION		
Size	Bank 0	Bank 1
512K	(4) 256K x 4	None
1MB	(4) 256K x 4	(4) 256K x 4
Note: Bank 0 is factory installed and not configurable.		