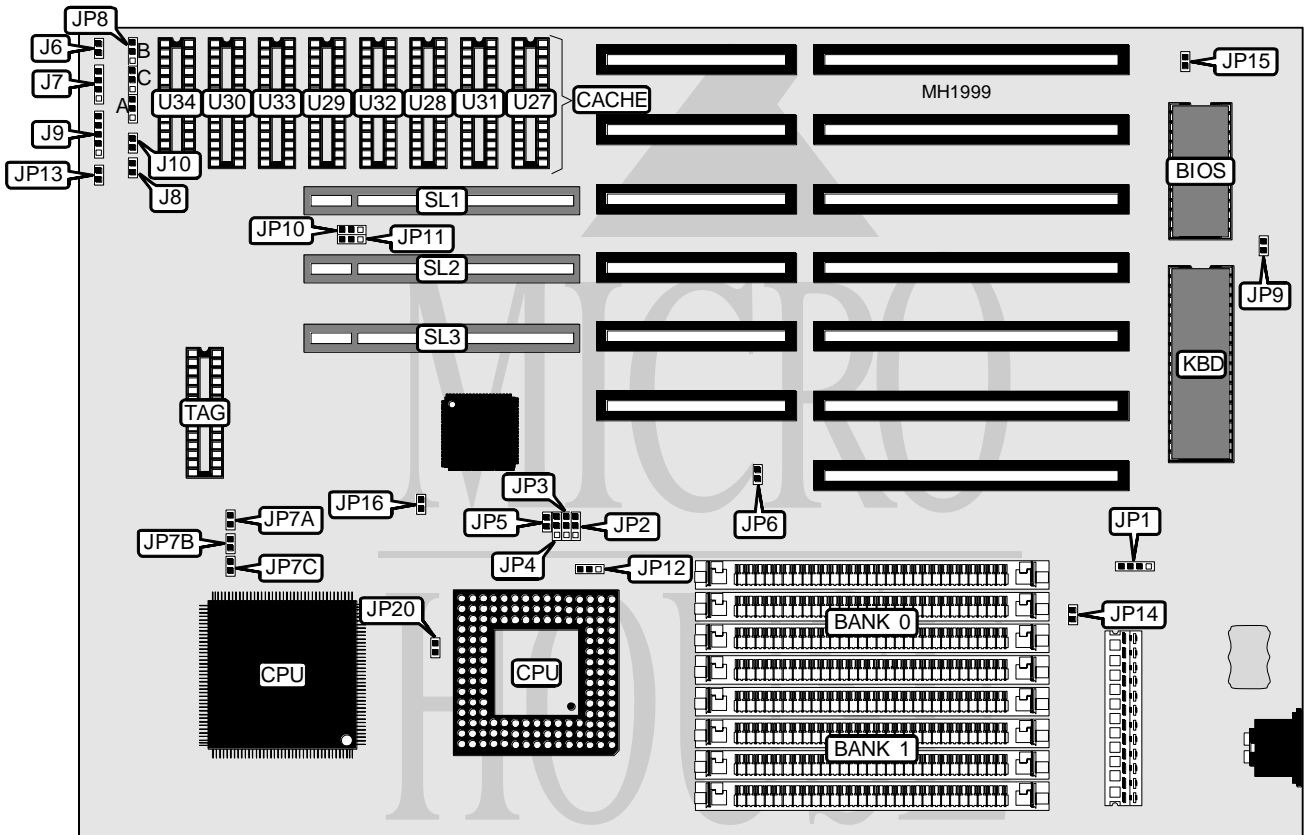


INFORMTECH INTERNATIONAL, INC. IT486SMVG MINI VER. 1.1

Processor	80486SX/80487SX/80486DX/80486DX2/Pentium Overdrive
Processor Speed	20/25/33/40(internal)50/50(internal)/66(internal)MHz
Chip Set	FOREX
Max. Onboard DRAM	64MB
Cache	64/128/256KB
BIOS	AMI
Dimensions	230mm x 218mm
I/O Options	32-bit VESA local bus slots (3)
NPU Options	None



CONNECTIONS			
Purpose	Location	Purpose	Location
Turbo LED	J6	Reset switch	J10
Speaker	J7	External battery	JP1
Turbo switch	J8	32-bit VESA Local bus slots	SL1
Power LED & keylock	J9	32-bit VESA Local bus slots	SL2 & SL3

Continued next page...

INFORMTECH INTERNATIONAL, INC.
IT486SMVG MINI VER. 1.1

... continued from previous page.

USER CONFIGURABLE SETTINGS		
Function	Jumper	Position
í CPU type select - 486DX/DX2/P24T (PGA)	JP2	pins 1 & 2 closed
CPU type select - 486SX/DX (PQFP) & 487SX/P23T (PGA)	JP2	pins 2 & 3 closed
í CPU type select -PGA	JP3 & JP4	pins 1 & 2 closed
CPU type select -PQFP	JP3 & JP4	pins 2 & 3 closed
í PFPQ disabled	JP5	Closed
PFPQ enabled	JP5	Open
í CMOS memory normal operation	JP6	Open
CMOS memory clear	JP6	Closed
í Factory configured - do not alter	JP9	Open
í CPU type select - 486CPU	JP12	pins 1 & 2 closed
CPU type select - P24T CPU	JP12	pins 2 & 3 closed
í Factory configured - do not alter	JP13	Open
í Factory configured - do not alter	JP14	Open
í Factory configured - do not alter	JP15	Open
í Factory configured - do not alter	JP16	Open
í Cyrix CPU type select - CX486DX	JP20	Open
Cyrix CPU type select - CX486DX2	JP20	Closed

DRAM CONFIGURATION		
Size	Bank 0	Bank 1
1MB	(4) 256K x 9	NONE
2MB	(4) 256K x 9	(4) 256K x 9
4MB	(4) 1M x 9	NONE
5MB	(4) 256K x 9	(4) 1M x 9
8MB	(4) 1M x 9	(4) 1M x 9
16MB	(4) 4M x 9	NONE
20MB	(4) 1M x 9	(4) 4M x 9
32MB	(4) 4M x 9	(4) 4M x 9
64MB	(4) 16M x 9	NONE

CACHE CONFIGURATION			
Size	Bank 0	Bank 1	TAG
64KB	(4) 8K x 8	(4) 8K x 8	(1) 8K x 8
128KB	(4) 32K x 8	NONE	(1) 8K x 8
256KB	(4) 32K x 8	(4) 32K x 8	(1) 32K x 8

Note: Bank 0 = U31, U32, U33, U34 Bank 1 = U27, U28, U29, U30

CACHE JUMPER CONFIGURATION			
Size	JP8A	JP8B	JP8C
64KB	pins 2 & 3 closed	pins 1 & 2 closed	pins 2 & 3 closed
128KB	pins 1 & 2 closed	pins 2 & 3 closed	pins 1 & 2 closed
256KB	pins 1 & 2 closed	pins 1 & 2 closed	pins 1 & 2 closed

Continued next page...

INFORMTECH INTERNATIONAL, INC.
IT486SMVG MINI VER. 1.1

CLOCK SPEED CONFIGURATION			
Speed	JP7A	JP7B	JP7C
20MHz	Open	Closed	Closed
25MHz	Closed	Open	Open
33MHz	Open	Open	Open
40MHz	Closed	Closed	Open
50MHz	Open	Closed	Open
50iMHz	Closed	Open	Open
66iMHz	Open	Open	Open

VESA WAIT STATE/BUS SPEED CONFIGURATION			
CPU speed	Wait states	JP10	JP11
< 33MHz	0 wait states	pins 1 & 2 closed	pins 1 & 2 closed
> 33MHz	1 wait state	pins 2 & 3 closed	pins 2 & 3 closed