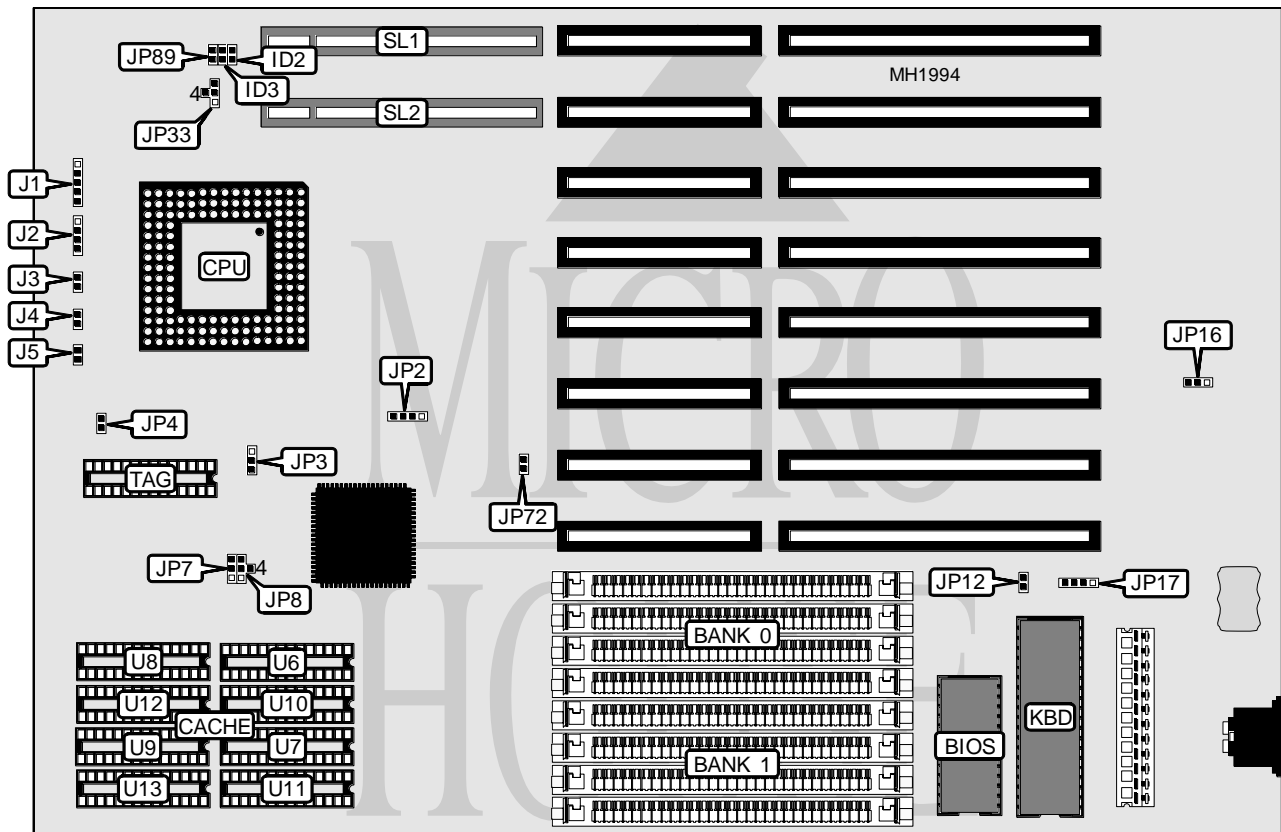


RELIALOGIC CORPORATION PRIVATE, LTD.

R 4 8 6 V L Q M B C

Processor	80486SX/80486DX/80486DX2
Processor Speed	25/33/50(internal)/66(internal)MHz
Chip Set	ALI
Max. Onboard DRAM	32MB
Cache	64/128/256KB
BIOS	AMI
Dimensions	330mm x 218mm
I/O Options	32-bit VESA local bus slots (2)
NPU Options	None



CONNECTIONS			
Purpose	Location	Purpose	Location
Power LED & keylock	J1	Reset switch	J5
Speaker	J2	External battery	JP17
Turbo switch	J3	32-bit VESA Local bus slots	SL1 & SL2
Turbo LED	J4		

Continued next page...

RELIALOGIC CORPORATION PRIVATE, LTD.

R486 VLQMB C

... continued from previous page.

USER CONFIGURABLE SETTINGS		
Function	Jumper	Position
í Monitor type select color	JP12	Closed
Monitor type select monochrome	JP12	Open
í CMOS memory normal operation	JP16	pins 1 & 2 closed
CMOS memory clear	JP16	pins 2 & 3 closed
í Factory configured - do not alter	JP33	pins 2 & 4 closed
í Weitek Power 9000 VLB card not installed	JP89	Closed
Weitek Power 9000 VLB card installed	JP89	Open
í Factory configured - do not alter	JP94	pins 1 & 2 closed
Note: The location of JP94 is unidentified.		

DRAM CONFIGURATION		
Size	Bank 0	Bank 1
1MB	(4) 256K x 9	NONE
2MB	(4) 256K x 9	(4) 256K x 9
4MB	(4) 1M x 9	NONE
5MB	(4) 256K x 9	(4) 1M x 9
8MB	(4) 1M x 9	(4) 1M x 9
16MB	(4) 4M x 9	NONE
20MB	(4) 1M x 9	(4) 4M x 9
20MB	(4) 4M x 9	(4) 1M x 9
32MB	(4) 4M x 9	(4) 4M x 9

CACHE CONFIGURATION			
Size	U6 to U9	U10 to U13	TAG
64KB	(4) 8K x 8	(4) 8K x 8	(1) 8K x 8
128KB	(4) 32K x 8	NONE	(1) 8K x 8
256KB	(4) 32K x 8	(4) 32K x 8	(1) 32K x 8

CACHE JUMPER CONFIGURATION		
Size	JP7	JP8
64KB	pins 2 & 3 closed	pins 2 & 4 closed
128KB	pins 1 & 2 closed	pins 2 & 3 closed
256KB	pins 1 & 2 closed	pins 1 & 2 closed

CPU SPEED CONFIGURATION						
Speed	JP2	JP3	JP4	ID2	ID3	JP72
25MHz	Pins 2 & 3 closed	Open	Open	Closed	Open	Closed
33MHz (SX)	Pins 2 & 3 closed	Open	Open	Closed	Open	Open
33MHz	Pins 1 & 2, 3 & 4 closed	Pins 2 & 3 closed	Open	Closed	Open	Open
50iMHz	Pins 2 & 3 closed	Open	Open	Closed	Open	Closed
66iMHz	Pins 1 & 2, 3 & 4 closed	Pins 2 & 3 closed	Open	Closed	Open	Open