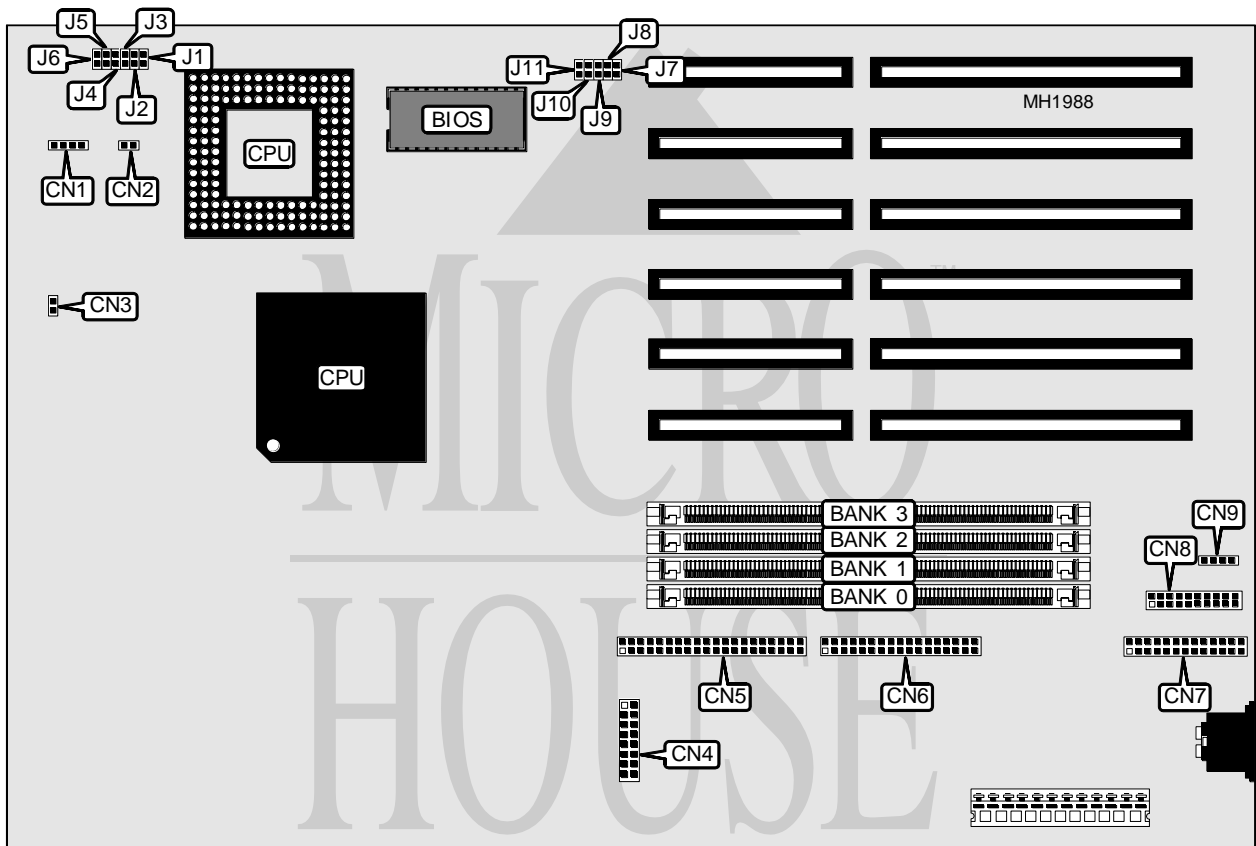


DELL COMPUTER CORPORATION

SYSTEM V486/50/66 MDT

Processor	80486DX/80486DX2/Pentium Overdrive
Processor Speed	25/33/50(internal)/66(internal)MHz
Chip Set	Unidentified
Max. Onboard DRAM	64MB
Cache	128KB
BIOS	Unidentified
Dimensions	330mm x 218mm
I/O Options	Floppy drive interface, IDE interface, parallel port, serial ports (2)
NPU Options	None



CONNECTIONS			
Purpose	Location	Purpose	Location
External battery	CN1	Floppy drive interface	CN6
IDE interface LED	CN2	Parallel port	CN7
Chassis fan power	CN3	Serial ports	CN8
Video connector	CN4	Mouse connector	CN9
IDE interface	CN5		

Continued next page...

DELL COMPUTER CORPORATION

SYSTEM V486/50/66 MDT

... continued from previous page.

USER CONFIGURABLE SETTINGS		
Function	Jumper	Position
í Mouse connector enabled (uses IRQ12)	J1	Closed
Mouse connector disabled (disables IRQ12)	J1	Open
í Factory configured - do not alter	J2	Closed
í Factory configured - do not alter	J3	Open
í Factory configured - do not alter	J4	Closed
í CMOS memory normal operation	J5	Closed
CMOS memory clear	J5	Open
í On board VGA controller enabled	J6	Closed
On board VGA controller disabled	J6	Open
í Factory configured - do not alter	J7	Open
í Factory configured - do not alter	J8	Open
í Factory configured - do not alter	J11	Open

DRAM CONFIGURATION				
Size	Bank 0	Bank 1	Bank 2	Bank 3
4MB	(1) 1M x 36	NONE	NONE	NONE
8MB	(1) 1M x 36	(1) 1M x 36	NONE	NONE
12MB	(1) 1M x 36	(1) 1M x 36	(1) 1M x 36	NONE
16MB	(1) 1M x 36	(1) 1M x 36	(1) 1M x 36	(1) 1M x 36
16MB	(1) 4M x 36	NONE	NONE	NONE
20MB	(1) 4M x 36	(1) 1M x 36	NONE	NONE
24MB	(1) 4M x 36	(1) 1M x 36	(1) 1M x 36	NONE
28MB	(1) 4M x 36	(1) 1M x 36	(1) 1M x 36	(1) 1M x 36
32MB	(1) 4M x 36	(1) 4M x 36	NONE	NONE
36MB	(1) 4M x 36	(1) 4M x 36	(1) 1M x 36	NONE
40MB	(1) 4M x 36	(1) 4M x 36	(1) 1M x 36	(1) 1M x 36
48MB	(1) 4M x 36	(1) 4M x 36	(1) 4M x 36	NONE
52MB	(1) 4M x 36	(1) 4M x 36	(1) 4M x 36	(1) 1M x 36
64MB	(1) 4M x 36	(1) 4M x 36	(1) 4M x 36	(1) 4M x 36

CPU SPEED CONFIGURATION		
Speed	J9	J10
25MHz	Closed	N/A
33MHz	N/A	Closed
50iMHz	Open	N/A
66iMHz	N/A	Open