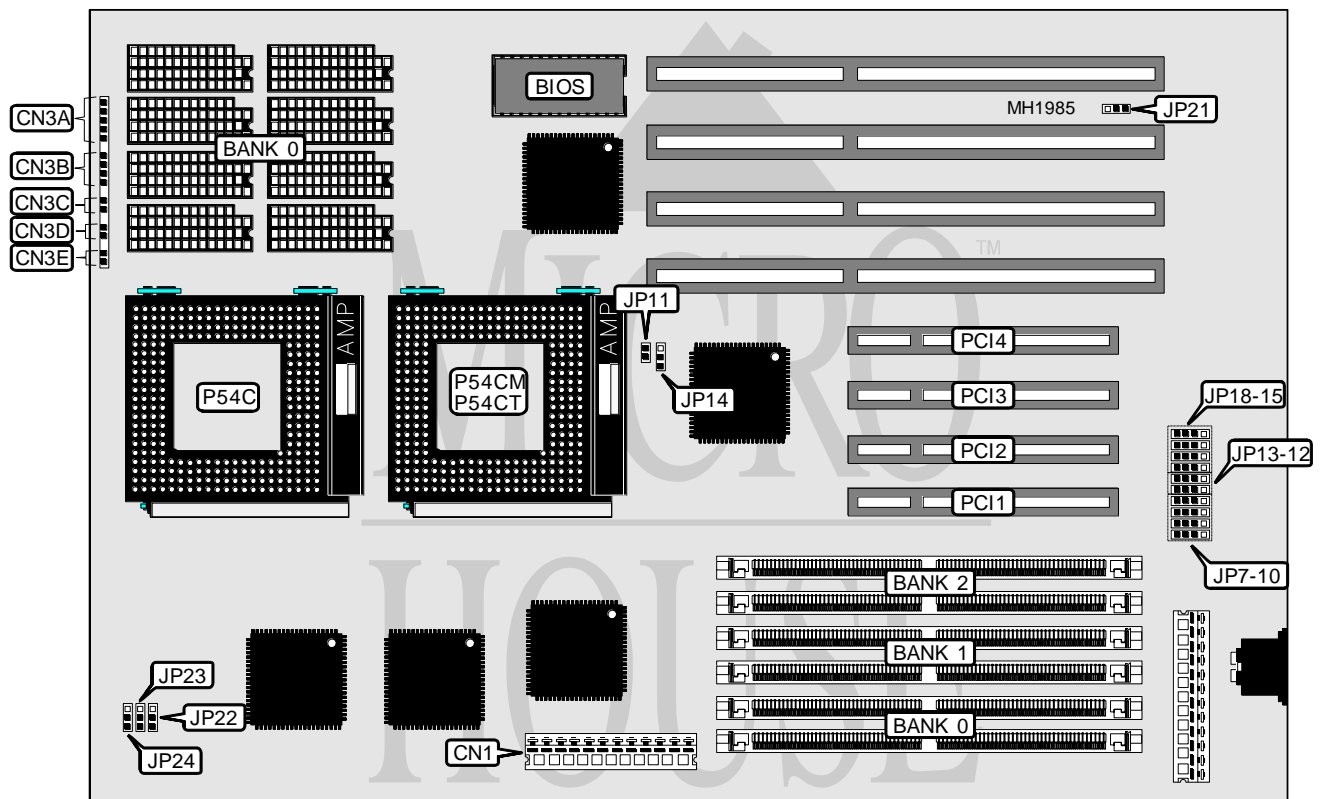


ASUS COMPUTER INTERNATIONAL PCI/E-P54NP4 (VERSION 2.0)

Processor	Pentium
Processor Speed	90/100MHz
Chip Set	Intel
Max. Onboard DRAM	192MB
Cache	256/512KB
BIOS	Award/NCR
Dimensions	330mm x 218mm
I/O Options	32-bit PCI slots (4)
NPU Options	None



CONNECTIONS			
Purpose	Location	Purpose	Location
3.3V power connector	CN1	Green PC power switch	CN3E
Keylock	CN3A	32-bit PCI slots	PCI1
Speaker	CN3B	32-bit PCI slots	PCI2
Reset switch	CN3C	32-bit PCI slots	PCI3
Power LED	CN3D	32-bit PCI slots	PCI4

Continued next page...

ASUS COMPUTER INTERNATIONAL PCI/E - P54NP4 (VERSION 2.0)

... continued from previous page.

USER CONFIGURABLE SETTINGS		
Function	Jumper	Position
í CPU internal core clock x 1.5	JP11	Open
CPU internal core clock x 2.0	JP11	Closed
í Single processor installed	JP14	pins 2 & 3 closed
Dual processors installed	JP14	pins 1 & 2 closed
í 5V flash BIOS programming or normal operation	JP21	pins 1 & 2 closed
12V flash BIOS programming	JP21	pins 2 & 3 closed
í Factory configured - do not alter	JP24	pins 1 & 2 closed

DRAM CONFIGURATION			
Size	Bank 0	Bank 1	Bank 2
2MB	(2) 256K x 36	NONE	NONE
4MB	(2) 256K x 36	(2) 256K x 36	NONE
4MB	(2) 512K x 36	NONE	NONE
6MB	(2) 256K x 36	(2) 256K x 36	(2) 256K x 36
6MB	(2) 256K x 36	(2) 512K x 36	NONE
6MB	(2) 512K x 36	(2) 256K x 36	NONE
8MB	(2) 512K x 36	(2) 256K x 36	(2) 256K x 36
8MB	(2) 512K x 36	(2) 512K x 36	NONE
8MB	(2) 1M x 36	NONE	NONE
10MB	(2) 1M x 36	(2) 256K x 36	NONE
10MB	(2) 256K x 36	(2) 512K x 36	(2) 512K x 36
10MB	(2) 256K x 36	(2) 1M x 36	NONE
12MB	(2) 1M x 36	(2) 256K x 36	(2) 256K x 36
12MB	(2) 512K x 36	(2) 512K x 36	(2) 512K x 36
12MB	(2) 512K x 36	(2) 1M x 36	NONE
12MB	(2) 1M x 36	(2) 512K x 36	NONE
16MB	(2) 2M x 36	NONE	NONE
16MB	(2) 1M x 36	(2) 512K x 36	(2) 512K x 36
16MB	(2) 1M x 36	(2) 1M x 36	NONE
18MB	(2) 2M x 36	(2) 256K x 36	NONE
18MB	(2) 256K x 36	(2) 1M x 36	(2) 1M x 36
18MB	(2) 2M x 36	(2) 256K x 36	NONE
20MB	(2) 512K x 36	(2) 1M x 36	(2) 1M x 36
20MB	(2) 2M x 36	(2) 256K x 36	(2) 256K x 36
20MB	(2) 2M x 36	(2) 512K x 36	NONE
24MB	(2) 2M x 36	(2) 512K x 36	(2) 512K x 36
24MB	(2) 2M x 36	(2) 1M x 36	NONE
24MB	(2) 1M x 36	(2) 1M x 36	(2) 1M x 36
24MB	(2) 1M x 36	(2) 2M x 36	NONE
32MB	(2) 4M x 36	NONE	NONE
32MB	(2) 2M x 36	(2) 1M x 36	(2) 1M x 36
32MB	(2) 2M x 36	(2) 2M x 36	NONE
34MB	(2) 256K x 36	(2) 2M x 36	(2) 2M x 36
34MB	(2) 256K x 36	(2) 4M x 36	NONE
34MB	(2) 4M x 36	(2) 256K x 36	NONE

Continued on next page . . .

ASUS COMPUTER INTERNATIONAL PCI/E-P54NP4 (VERSION 2.0)

... continued from previous page

DRAM CONFIGURATION (continued)			
Size	Bank 0	Bank 1	Bank 2
36MB	(2) 512K x 36	(2) 1M x 36	(2) 1M x 36
36MB	(2) 512K x 36	(2) 4M x 36	NONE
36MB	(2) 4M x 36	(2) 256K x 36	(2) 256K x 36
36MB	(2) 4M x 36	(2) 512K x 36	NONE
40MB	(2) 1M x 36	(2) 2M x 36	(2) 2M x 36
40MB	(2) 1M x 36	(2) 4M x 36	NONE
40MB	(2) 4M x 36	(2) 512K x 36	(2) 512K x 36
40MB	(2) 4M x 36	(2) 1M x 36	NONE
48MB	(2) 2M x 36	(2) 2M x 36	(2) 2M x 36
48MB	(2) 2M x 36	(2) 4M x 36	NONE
48MB	(2) 4M x 36	(2) 1M x 36	(2) 1M x 36
48MB	(2) 4M x 36	(2) 2M x 36	NONE
64MB	(2) 4M x 36	(2) 2M x 36	(2) 2M x 36
64MB	(2) 4M x 36	(2) 4M x 36	NONE
64MB	(2) 8M x 36	NONE	NONE
66MB	(2) 256K x 36	(2) 4M x 36	(2) 4M x 36
66MB	(2) 8M x 36	(2) 256K x 36	NONE
66MB	(2) 256K x 36	(2) 8M x 36	NONE
68MB	(2) 512K x 36	(2) 4M x 36	(2) 4M x 36
68MB	(2) 8M x 36	(2) 512K x 36	NONE
68MB	(2) 8M x 36	(2) 256K x 36	(2) 256K x 36
72MB	(2) 1M x 36	(2) 4M x 36	(2) 4M x 36
72MB	(2) 1M x 36	(2) 8M x 36	NONE
72MB	(2) 8M x 36	(2) 512K x 36	(2) 512K x 36
72MB	(2) 8M x 36	(2) 1M x 36	NONE
80MB	(2) 2M x 36	(2) 4M x 36	(2) 4M x 36
80MB	(2) 2M x 36	(2) 8M x 36	NONE
80MB	(2) 8M x 36	(2) 1M x 36	(2) 1M x 36
80MB	(2) 8M x 36	(2) 2M x 36	NONE
96MB	(2) 4M x 36	(2) 4M x 36	(2) 4M x 36
96MB	(2) 4M x 36	(2) 8M x 36	NONE
96MB	(2) 8M x 36	(2) 2M x 36	(2) 2M x 36
96MB	(2) 8M x 36	(2) 4M x 36	NONE
128MB	(2) 8M x 36	(2) 4M x 36	(2) 4M x 36
128MB	(2) 8M x 36	(2) 8M x 36	NONE
128MB	(2) 16M x 36	NONE	NONE
130MB	(2) 256K x 36	(2) 8M x 36	(2) 8M x 36
130MB	(2) 256K x 36	(2) 16M x 36	NONE
130MB	(2) 16M x 36	(2) 256K x 36	NONE
132MB	(2) 16M x 36	(2) 256K x 36	(2) 256K x 36
132MB	(2) 512K x 36	(2) 8M x 36	(2) 8M x 36
132MB	(2) 16M x 36	(2) 512K x 36	NONE
132MB	(2) 512K x 36	(2) 16M x 36	NONE

Continued on next page ...

ASUS COMPUTER INTERNATIONAL

PCI/E-P54NP4 (VERSION 2.0)

... continued from previous page

DRAM CONFIGURATION (continued)			
Size	Bank 0	Bank 1	Bank 2
136MB	(2) 1M x 36	(2) 16M x 36	NONE
136MB	(2) 1M x 36	(2) 8M x 36	(2) 8M x 36
136MB	(2) 16M x 36	(2) 512K x 36	(2) 512K x 36
136MB	(2) 16M x 36	(2) 1M x 36	NONE
144MB	(2) 2M x 36	(2) 8M x 36	(2) 8M x 36
144MB	(2) 2M x 36	(2) 16M x 36	NONE
144MB	(2) 16M x 36	(2) 1M x 36	(2) 1M x 36
144MB	(2) 16M x 36	(2) 2M x 36	NONE
160MB	(2) 4M x 36	(2) 8M x 36	(2) 8M x 36
160MB	(2) 4M x 36	(2) 16M x 36	NONE
160MB	(2) 16M x 36	(2) 2M x 36	(2) 2M x 36
160MB	(2) 16M x 36	(2) 4M x 36	NONE
192MB	(2) 8M x 36	(2) 8M x 36	(2) 8M x 36
192MB	(2) 8M x 36	(2) 16M x 36	NONE
192MB	(2) 16M x 36	(2) 4M x 36	(2) 4M x 36
192MB	(2) 16M x 36	(2) 8M x 36	NONE

CACHE CONFIGURATION			
Size	Bank 0	JP22	JP23
0KB	NONE	pins 1 & 2 closed	pins 1 & 2 closed
256KB	(8) 32K x 8	pins 2 & 3 closed	pins 1 & 2 closed
512KB	(8) 64K x 8	pins 2 & 3 closed	pins 2 & 3 closed

EISA BUS INTERRUPT SELECT	
Interrupt	Setting
IRQ5	JP7 & JP18/pins 2 & 3 closed
IRQ9	JP8 & JP17/pins 2 & 3 closed
IRQ11	JP9 & JP16/pins 2 & 3 closed
IRQ14	JP10 & JP15/pins 2 & 3 closed
IRQ15	JP12 & JP13/pins 2 & 3 closed

PCI BUS EDGE TRIGGER INTERRUPT SELECT				
IRQ	PCI1	PCI2	PCI3	PCI4
5	JP7/pins 1 & 2	JP7/pins 3 & 4	JP18/pins 1 & 2	JP18/pins 3 & 4
9	JP8/pins 1 & 2	JP8/pins 3 & 4	JP17/pins 1 & 2	JP17/pins 3 & 4
11	JP9/pins 1 & 2	JP9/pins 3 & 4	JP16/pins 1 & 2	JP16/pins 3 & 4
14	JP10/pins 1 & 2	JP10/pins 3 & 4	JP15/pins 1 & 2	JP15/pins 3 & 4
15	JP12/pins 1 & 2	JP12/pins 3 & 4	JP13/pins 1 & 2	JP13/pins 3 & 4

Note: Pins designated should be in the closed position.