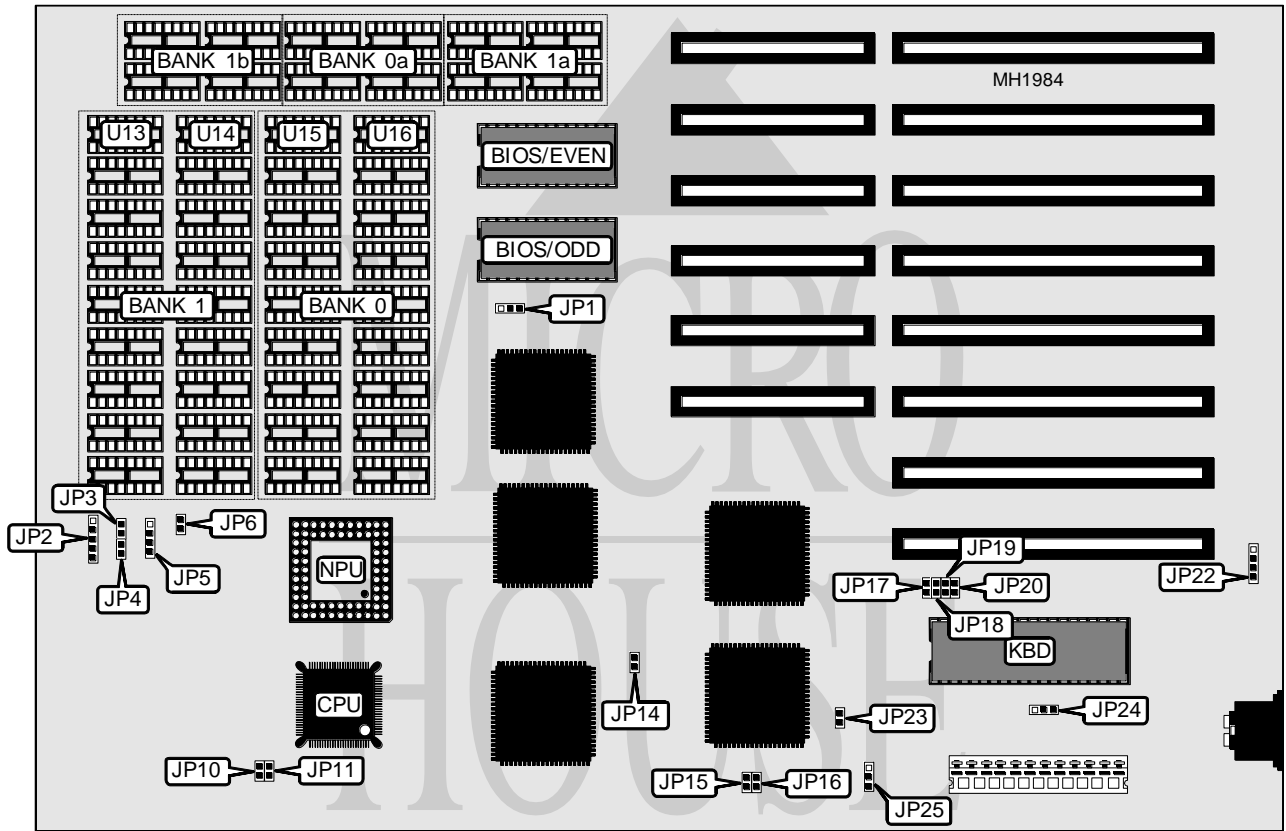


FUJIKAMA USA, INC.

FK 386 MT

Processor	80386SX
Processor Speed	16MHz
Chip Set	VLSI
Max. Onboard DRAM	4MB
Cache	None
BIOS	AMI/Award/Phoenix
Dimensions	330mm x 218mm
I/O Options	None
NPU Options	80387SX



CONNECTIONS			
Purpose	Location	Purpose	Location
Power LED & keylock	JP2	Speaker	JP5
Reset switch	JP3	Turbo switch	JP6
Turbo LED	JP4	External battery	JP22

Continued next page...

FUJIKAMA USA, INC.
FK 386 MT

... continued from previous page.

USER CONFIGURABLE SETTINGS		
Function	Jumper	Position
í BIOS type select 27256	JP1	pins 1 & 2 closed
BIOS type select 27128	JP1	pins 2 & 3 closed
í Shadow RAM map enabled	JP14	Open
Shadow RAM map disabled	JP14	Closed
í Factory configured - do not alter	JP17	Open
í Factory configured - do not alter	JP18	Open
í Factory configured - do not alter	JP19	Open
í Factory configured - do not alter	JP20	Open
í Power good signal detect from power supply	JP24	pins 2 & 3 closed
Power good signal detect from board	JP24	pins 1 & 2 closed
í Monitor type select color	JP25	pins 1 & 2 closed
Monitor type select monochrome	JP25	pins 2 & 3 closed

DRAM CONFIGURATION					
Size	Bank 0a	Bank 1a	Bank 1b	U13 & U14	U15 & U16
512KB	(4) 44256	NONE	NONE	NONE	(2) 41256
640KB	(4) 44256	NONE	(4) 4464	(2) 4164	(2) 41256
1MB	(4) 44256	(4) 44256	NONE	(2) 41256	(2) 41256

DRAM CONFIGURATION		
Size	Bank 0	Bank 1
2MB	(18) 411000	NONE
4MB	(18) 411000	(18) 411000

DRAM TYPE CONFIGURATION			
Size	JP15	JP16	JP23
512KB	Closed	Open	Closed
640KB	Open	Closed	Closed
1MB	Open	Closed	Closed
2MB	Closed	Open	Open
4MB	Open	Closed	Open

DRAM SPEED CONFIGURATION			
DRAM speed	Wait states	JP10	JP11
80ns	0 wait states	Closed	Closed
100ns	1 wait state	Open	Open