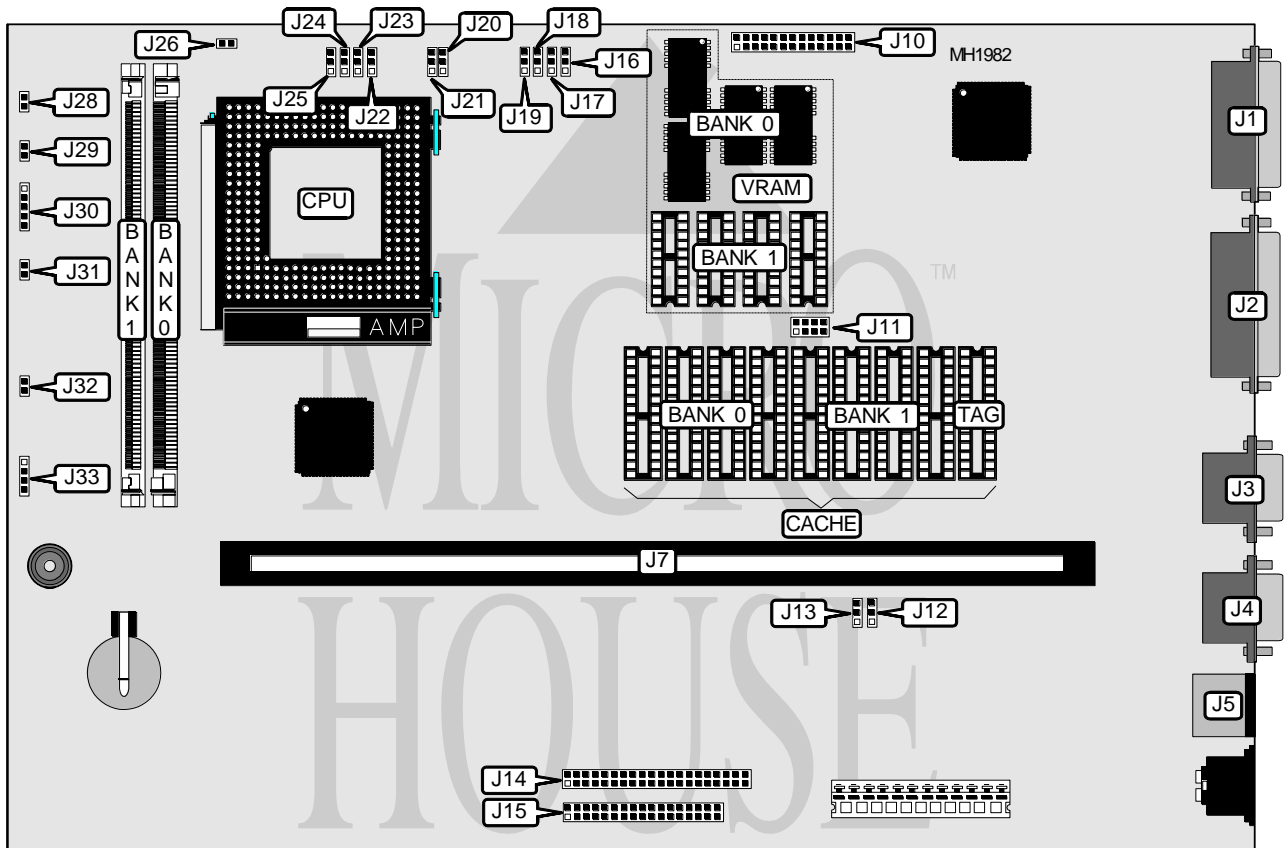


INTEL CORPORATION

R486SX254F/R486SX33F/R486DX334F/R486DX2664F

Processor	80486SX/80487SX/80486DX/ODP486SX/80486DX2/Pentium Overdrive
Processor Speed	25/33/50(internal)/66(internal)MHz
Chip Set	VLSI
Max. Onboard DRAM	32MB
Cache	64/128/256KB
BIOS	Phoenix
Dimensions	330mm x 218mm
I/O Options	32-bit proprietary riser card slot, floppy drive interface, IDE interface, parallel port, PS/2 mouse port, serial ports (2), VGA feature connector, VGA port
NPU Options	None



Continued next page...

INTEL CORPORATION

R486SX254F/R486SX33F/R486DX334F/R486DX2664F

... continued from previous page.

CONNECTIONS			
Purpose	Location	Purpose	Location
VGA port	J1	Floppy drive interface	J15
Parallel port	J2	+5V auxiliary fan power	J26
Serial port 2	J3	IDE interface LED	J29
Serial port 1	J4	Power LED & Keylock	J30
PS/2 mouse port	J5	Reset switch	J31
32 Bit proprietary riser card	J7	+12V auxiliary fan power	J32
VGA feature connector	J10	External speaker	J33
IDE interface	J14		
Note: To connect an external speaker, remove the jumper from pins 3 & 4 and connect external speaker between pins 1 & 4.			

USER CONFIGURABLE SETTINGS		
Function	Jumper	Position
í FLASH BIOS programming enabled	J12	pins 1 & 2 closed
FLASH BIOS programming disabled	J12	pins 2 & 3 closed
í Normal FLASH operation	J13	pins 1 & 2 closed
Invoke boot block recovery	J13	pins 2 & 3 closed
í Enable onboard video	J16	pins 1 & 2 closed
Disable onboard video	J16	pins 2 & 3 closed
í Disable floppy drive write protect	J17	pins 2 & 3 closed
Enable floppy drive write protect	J17	pins 1 & 2 closed
í Enable password	J20	pins 2 & 3 closed
Disable password	J20	pins 1 & 2 closed
í Enable user to enter Setup	J21	pins 1 & 2 closed
Prevent user to enter Setup	J21	pins 2 & 3 closed
í CMOS normal operation	J28	Closed
CMOS clear upon power-up	J28	Open

Continued next page...

INTEL CORPORATION

R486SX254F/R486SX33F/R486DX334F/R486DX2664F

... continued from previous page.

DRAM CONFIGURATION		
Size	Bank 0	Bank 1
2MB	(1) 512K x 36	NONE
4MB	(1) 512K x 36	(1) 512K x 36
4MB	(1) 1M x 36	NONE
6MB	(1) 512K x 36	(1) 1M x 36
6MB	(1) 1M x 36	(1) 512K x 36
8MB	(1) 1M x 36	(1) 1M x 36
8MB	(1) 2M x 36	NONE
10MB	(1) 2M x 36	(1) 512K x 36
10MB	(1) 512K x 36	(1) 2M x 36
12MB	(1) 2M x 36	(1) 1M x 36
16MB	(1) 1M x 36	(1) 2M x 36
16MB	(1) 2M x 36	(1) 2M x 36
16MB	(1) 4M x 36	NONE
18MB	(1) 512K x 36	(1) 4M x 36
18MB	(1) 4M x 36	(1) 512K x 36
20MB	(1) 1M x 36	(1) 4M x 36
20MB	(1) 4M x 36	(1) 1M x 36
24MB	(1) 2M x 36	(1) 4M x 36
24MB	(1) 4M x 36	(1) 2M x 36
32MB	(1) 4M x 36	(1) 4M x 36

CACHE CONFIGURATION			
Size	Bank 0	Bank 1	TAG
64KB	(4) 8K x 8	(4) 8K x 8	(1) 32K x 8
128KB	(4) 32K x 8	NONE	(1) 32K x 8
256KB	(4) 32K x 8	(4) 32K x 8	(1) 32K x 8

CACHE JUMPER CONFIGURATION	
Size	J11
64KB	Open
128KB	pins 1 & 2, 5 & 6 closed
256KB	pins 1 & 2, 3 & 4, 7 & 8 closed

CPU TYPE CONFIGURATION				
CPU Type	J22	J23	J24	J25
80486SX	pins 1 & 2 closed	pins 2 & 3 closed	pins 2 & 3 closed	pins 2 & 3 closed
80487SX	pins 2 & 3 closed	pins 1 & 2 closed	pins 2 & 3 closed	pins 1 & 2 closed
80486DX	pins 2 & 3 closed	pins 1 & 2 closed	pins 1 & 2 closed	pins 2 & 3 closed
80486DX2	pins 2 & 3 closed	pins 1 & 2 closed	pins 1 & 2 closed	pins 2 & 3 closed
ODP486SX	pins 2 & 3 closed	pins 1 & 2 closed	pins 2 & 3 closed	pins 1 & 2 closed

Continued on next page ...

INTEL CORPORATION

R486SX254F/R486SX33F/R486DX334F/R486DX2664F

... continued from previous page

CPU SPEED CONFIGURATION		
CPU Speed	J18	J19
25MHz	pins 1 & 2 closed	pins 1 & 2 closed
33MHz	pins 1 & 2 closed	pins 2 & 3 closed
50iMHz	pins 1 & 2 closed	pins 1 & 2 closed
66iMHz	pins 1 & 2 closed	pins 2 & 3 closed

VRAM CONFIGURATION		
Size	Bank 0	Bank 1
512K	(4) 256 x 4	NONE
1MB	(4) 256 x 4	(4) 256 x 4