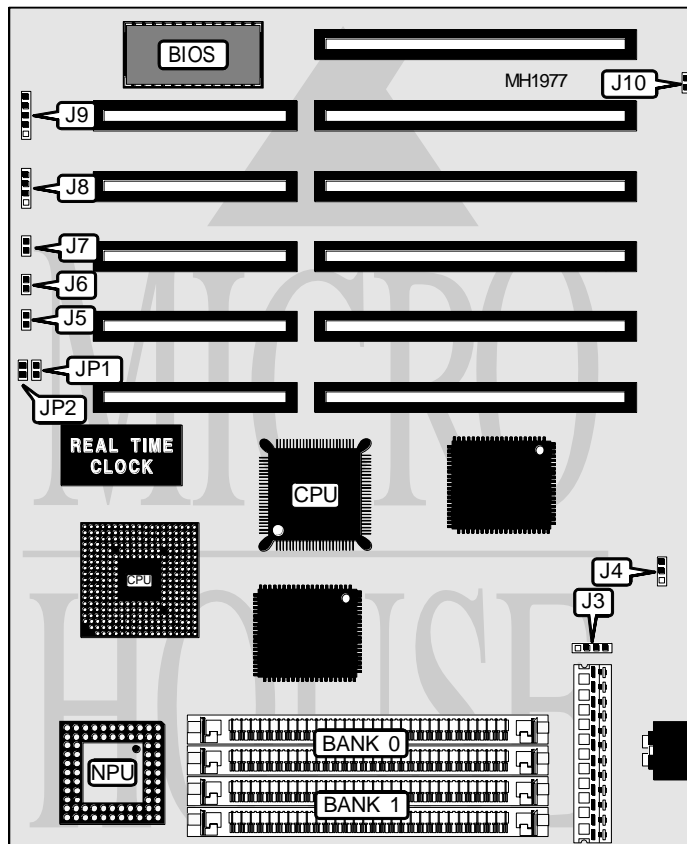


## PINE TECHNOLOGY

## P T - 3 2 1

<b>Processor</b>	80386DX/CX486DLC
<b>Processor Speed</b>	25/33/40MHz
<b>Chip Set</b>	MXIC
<b>Max. Onboard DRAM</b>	16MB
<b>Cache</b>	None
<b>BIOS</b>	AMI
<b>Dimensions</b>	330mm x 218mm
<b>I/O Options</b>	None
<b>NPU Options</b>	80387SX/CX487DLC



CONNECTIONS			
Purpose	Location	Purpose	Location
External battery	J3	Reset switch	J7
Turbo LED	J5	Speaker	J8
Turbo switch	J6	Power LED & keylock	J9

Continued next page...

## PINE TECHNOLOGY

## PT - 3 2 1

... continued from previous page.

USER CONFIGURABLE SETTINGS		
Function	Jumper	Position
í CMOS normal operation	J4	pins 1 & 2 closed
CMOS clear	J4	pins 2 & 3 closed
í Monitor type select color	J10	Closed
Monitor type select monochrome	J10	Open

DRAM CONFIGURATION		
Size	Bank 0	Bank 1
1MB	(2) 256K x 9	(2) 256K x 9
4MB	(2) 1M x 9	(2) 1M x 9
16MB	(2) 4M x 9	(2) 4M x 9

FREQUENCY SELECT FROM CLOCK GENERATOR CONFIGURATION		
Speed	JP1	JP2
80MHz	Closed	Open
66MHz	Open	Closed