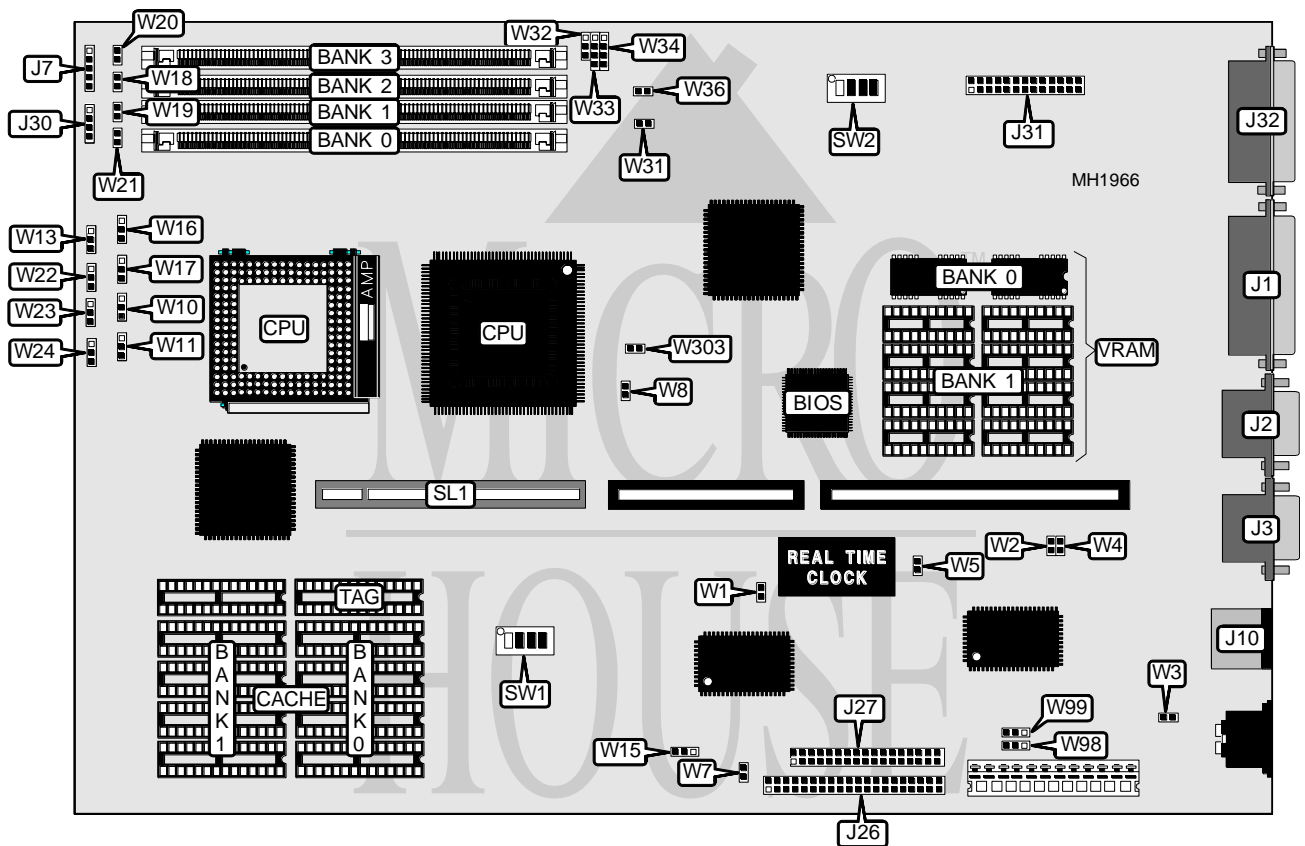


MICRONICS COMPUTERS, INC.

M P O W E R 4

Processor	80486SX/ODP486SX/80486DX/80486DX2/Pentium Overdrive
Processor Speed	25/33/50(internal)/50/66(internal)/75(internal), 100(internal)MHz
Chip Set	Micronics
Max. Onboard DRAM	64MB
Cache	64/128/256KB
BIOS	Phoenix
Dimensions	330mm x 218mm
I/O Options	32-bit VESA local bus, floppy drive interface, IDE interface, parallel port, PS/2 mouse port, serial ports (2), VGA feature connector, VGA port
NPU Options	None



CONNECTIONS			
Purpose	Location	Purpose	Location
Parallel port	J1	Video feature connector	J31
Serial port 2	J2	VGA port	J32
Serial port 1	J3	Turbo LED	W18
Power LED & keylock	J7	Turbo switch	W19
PS/2 mouse port	J10	Reset switch	W20
IDE interface	J26	IDE interface LED	W21
Floppy drive interface	J27	32-bit VESA Local bus slots	SL1
Speaker	J30		

Continued next page...

MICRONICS COMPUTERS, INC.

M P O W E R 4

. continued from previous page.

USER CONFIGURABLE SETTINGS		
Function	Jumper/Switch	Position
í Real time clock installed	W1	Closed
Real time clock not installed	W1	Open
í Monitor type select color	W2	Closed
Monitor type select monochrome	W2	Open
í IRQ12 PS/2 mouse enabled	W3	Closed
PS/2 mouse disabled	W3	Open
í Parity enabled	W4	Closed
Parity disabled	W4	Open
í CMOS memory normal operation	W5	Closed
CMOS memory clear	W5	Open
í Super I/O enabled	W7	Open
Super I/O disabled	W7	Closed
í Flash BIOS write protect enabled	W8	Open
Flash BIOS write protect disabled	W8	Closed
í PQFP not installed	W13	Open
PQFP disabled by Overdrive processor	W13	pins 1 & 2 closed
PQFP manually disabled	W13	pins 2 & 3 closed
í Factory configured - do not alter	W15	pins 1 & 2 closed
í Factory configured - do not alter	W31	Open
í 80486SX CPU enabled	W33	pins 2 & 3 closed
80486SX CPU disabled	W33	1 & 2, 3 & 4 closed
í Factory configured - do not alter	W36	Open
í VGA IRQ9 disabled	W303	Open
VGA IRQ9 enabled	W303	Closed
í Factory configured - do not alter	SW1/3	Open
í Factory configured - do not alter	SW1/4	Open
VPU chip disabled	SW2/1	Open
VPU chip enabled	SW2/1	Closed
Video RAMDAC at snooping mode	SW2/2	Open
Video RAMDAC at normal mode	SW2/2	Closed
VGA BIOS disabled	SW2/3	Open
VGA BIOS enabled	SW2/3	Closed
External speaker disabled	SW2/3	Open
External speaker enabled	SW2/3	Closed

Continued next page...

MICRONICS COMPUTERS, INC.

MPOWER 4

. continued from previous page.

DRAM CONFIGURATION				
Size	Bank 0	Bank 1	Bank 2	Bank 3
1MB	(1) 256K x 36	NONE	NONE	NONE
2MB	(1) 256K x 36	(1) 256K x 36	NONE	NONE
4MB	(1) 1M x 36	NONE	NONE	NONE
6MB	(1) 256K x 36	(1) 256K x 36	(1) 1M x 36	NONE
8MB	(1) 1M x 36	(1) 1M x 36	NONE	NONE
10MB	(1) 256K x 36	(1) 256K x 36	(1) 1M x 36	(1) 1M x 36
12MB	(1) 1M x 36	(1) 1M x 36	(1) 1M x 36	NONE
16MB	(1) 1M x 36	(1) 1M x 36	(1) 1M x 36	(1) 1M x 36
16MB	(1) 4M x 36	NONE	NONE	NONE
18MB	(1) 256K x 36	(1) 256K x 36	(1) 4M x 36	NONE
20MB	(1) 1M x 36	(1) 4M x 36	NONE	NONE
24MB	(1) 1M x 36	(1) 1M x 36	(1) 4M x 36	NONE
32MB	(1) 4M x 36	(1) 4M x 36	NONE	NONE
36MB	(1) 4M x 36	(1) 4M x 36	(1) 4M x 36	NONE
40MB	(1) 1M x 36	(1) 1M x 36	(1) 4M x 36	(1) 4M x 36
48MB	(1) 4M x 36	(1) 4M x 36	(1) 4M x 36	NONE
64MB	(1) 4M x 36	(1) 4M x 36	(1) 4M x 36	(1) 4M x 36

CACHE CONFIGURATION			
Size	Bank 0	Bank 1	TAG
64KB	(4) 8K x 8	(4) 8K x 8	(1) 8K x 8
128KB	(4) 32K x 8	NONE	(1) 32K x 8
256KB	(4) 32K x 8	(4) 32K x 8	(1) 32K x 8

CACHE JUMPER CONFIGURATION							
Size	W10	W11	W16	W17	W22	W23	W24
64KB	1 & 2	1 & 2	1 & 2	1 & 2	2 & 3	2 & 3	1 & 2
128KB	1 & 2	2 & 3	1 & 2	2 & 3	1 & 2	1 & 2	2 & 3
256KB	2 & 3	2 & 3	2 & 3	2 & 3	2 & 3	2 & 3	2 & 3

Note: Pins designated should be in the closed position.

80486DX4 CONFIGURATION		
80486DX4	W32	W34
Disabled	pins 1 & 2 closed	pins 3 & 4 closed
Enabled	Open	Open

Continued next page...

MICRONICS COMPUTERS, INC.
M P O W E R 4

. continued from previous page.

CPU SPEED CONFIGURATION		
Speed	Switch 1/1	Switch 1/2
25MHz	Open	Closed
33MHz	Closed	Closed
50iMHz	Open	Closed
66iMHz	Closed	Closed
75iMHz	Open	Closed
100iMHz	Closed	Closed

DMA CHANNEL CONFIGURATION		
DMA Channel	W98	W99
Channel 1	pins 1 & 2 closed	pins 1 & 2 closed
Channel 2	pins 2 & 3 closed	pins 2 & 3 closed

VRAM CONFIGURATION		
Size	Bank 0	Bank 1
1MB	(2) 512K x 8	NONE
2MB	(2) 512K x 8	(8) 256K x 4
Note: Bank 0 is factory installed and is not configurable.		